

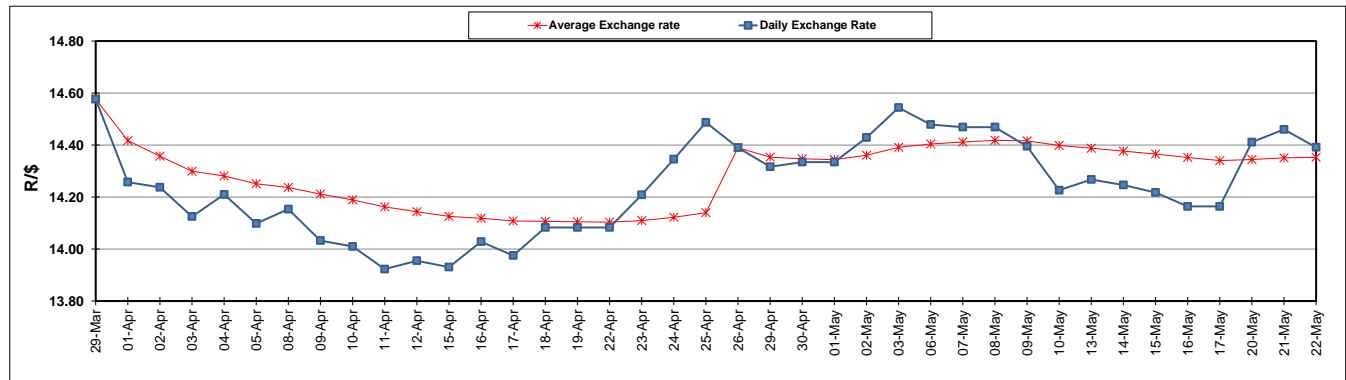
	PETROL 95 ULP	PETROL 93 ULP & LRP	DIESEL 0.05%	DIESEL 0.005%	ILL. PAR.
GAUTENG PUMP PRICE (SA c/l) AS FROM 01/05/2019	1 667.000	1 648.000	-	-	-
WHOLESALE PRICE (SA c/l) AS FROM 01/05/2019	-	-	1 488.120	1 494.520	965.678
SINGLE NATIONAL MAXIMUM RETAIL PRICE	-	-	-	-	1 231.000
BASIC FUEL PRICE - 22/05/2019 (SA c/l)	764.800	753.869	795.835	802.581	789.297
PRESS RELEASE CONTRIBUTION TO BFP 01/05/2019 - 22/05/2019 (SA c/l)	777.170	768.170	784.630	791.030	781.128
UNIT OVER/(UNDER) RECOVERY - 22/05/2019 (SA c/l)	12.370	14.301	(11.205)	(11.551)	(8.169)
AVERAGE BASIC FUEL PRICE 26/04/2019 - 22/05/2019	762.195	751.176	798.854	805.872	793.419
AVERAGE UNIT OVER/(UNDER) RECOVERY 26/04/2019 - 22/05/2019	6.449	8.468	(14.382)	(14.842)	(12.765)

### ANALYSIS MOVEMENT OF AVERAGE OVER/(UNDER) RECOVERY

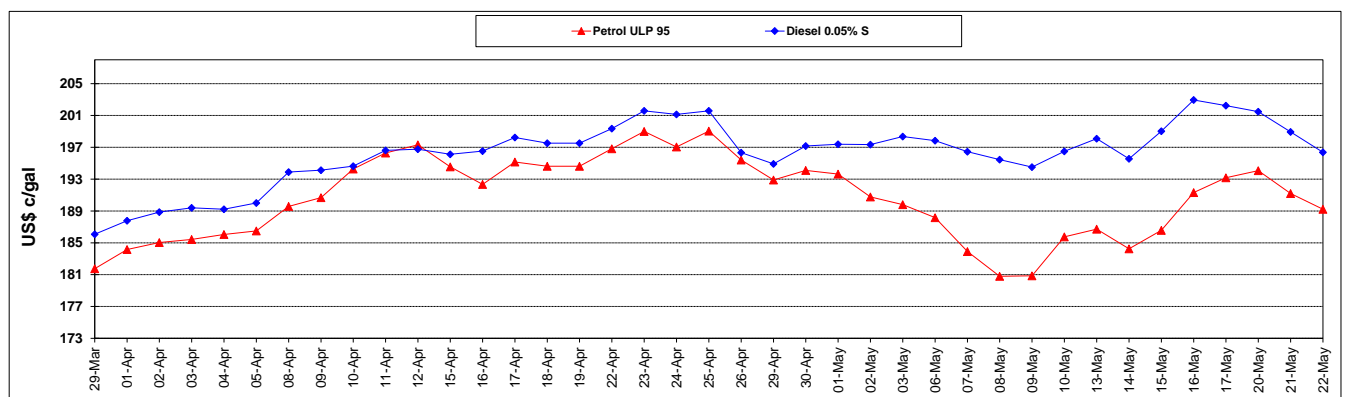
	PETROL 95	PETROL 93	DIESEL 0.05%	DIESEL 0.005%	ILL. PAR.
- MOVEMENT IN INTERNATIONAL PRODUCT PRICES	17.755	19.610	(2.532)	(2.888)	(0.996)
- MOVEMENT IN EXCHANGE RATE	(11.306)	(11.142)	(11.850)	(11.954)	(11.769)
AVERAGE UNIT OVER/(UNDER) RECOVERY 26/04/2019 - 22/05/2019	6.449	8.468	(14.382)	(14.842)	(12.765)

**R/\$ EXCHANGE RATE - (R/\$14.3913 - 22/05/2019)**

### EXCHANGE RATE USED IN BASIC FUEL PRICE



### INTERNATIONAL PRODUCT PRICES OF BASKET USED IN BASIC FUEL PRICE



### BASIC FUEL PRICE IN SA CENTS PER LITRE

