

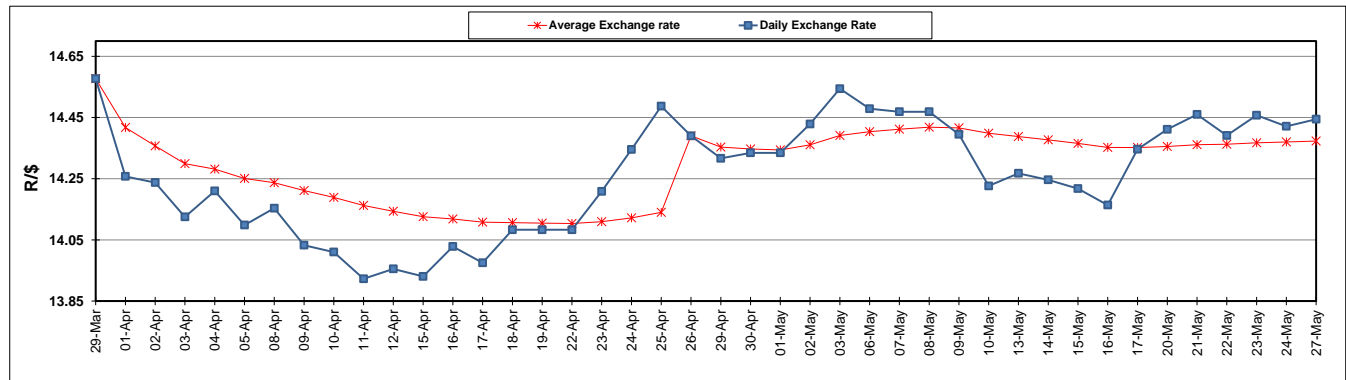
	PETROL 95 ULP	PETROL 93 ULP & LRP	DIESEL 0.05%	DIESEL 0.005%	ILL. PAR.
GAUTENG PUMP PRICE (SA c/l) AS FROM 01/05/2019	1 667.000	1 648.000	-	-	-
WHOLESALE PRICE (SA c/l) AS FROM 01/05/2019	-	-	1 488.120	1 494.520	965.678
SINGLE NATIONAL MAXIMUM RETAIL PRICE	-	-	-	-	1 231.000
BASIC FUEL PRICE - 27/05/2019 (SA c/l)	732.504	720.873	765.709	771.297	759.497
PRESS RELEASE CONTRIBUTION TO BFP 01/05/2019 - 27/05/2019 (SA c/l)	777.170	768.170	784.630	791.030	781.128
UNIT OVER/(UNDER) RECOVERY - 27/05/2019 (SA c/l)	44.666	47.297	18.921	19.733	21.631
AVERAGE BASIC FUEL PRICE 26/04/2019 - 27/05/2019	759.103	747.961	795.257	802.112	789.733
AVERAGE UNIT OVER/(UNDER) RECOVERY 26/04/2019 - 27/05/2019	10.704	12.845	(10.763)	(11.082)	(9.014)

ANALYSIS MOVEMENT OF AVERAGE OVER/(UNDER) RECOVERY

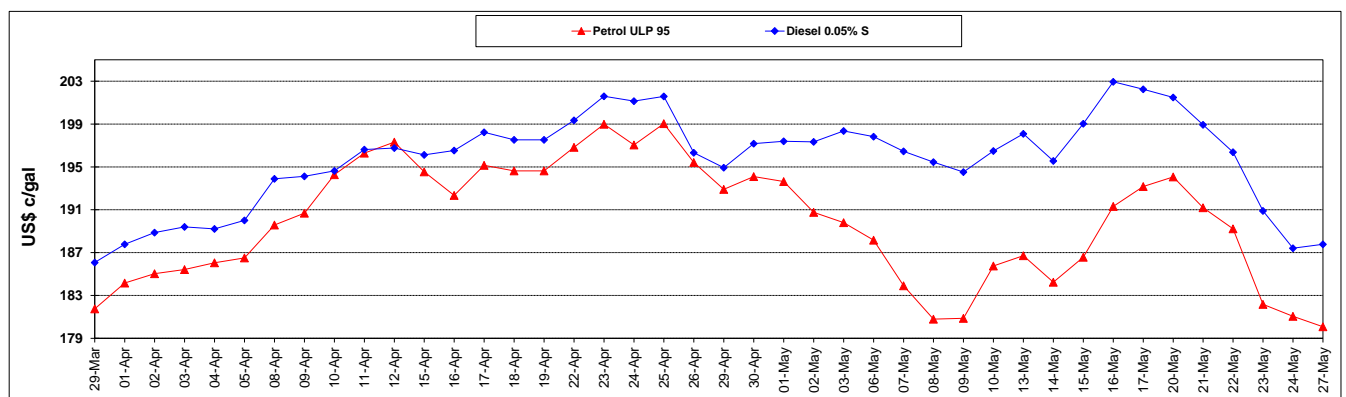
	PETROL 95	PETROL 93	DIESEL 0.05%	DIESEL 0.005%	ILL. PAR.
- MOVEMENT IN INTERNATIONAL PRODUCT PRICES	23.019	24.980	2.140	1.932	3.799
- MOVEMENT IN EXCHANGE RATE	(12.316)	(12.135)	(12.903)	(13.014)	(12.813)
AVERAGE UNIT OVER/(UNDER) RECOVERY 26/04/2019 - 27/05/2019	10.704	12.845	(10.763)	(11.082)	(9.014)

R/\$ EXCHANGE RATE - (R/\$14.4445 - 27/05/2019)

EXCHANGE RATE USED IN BASIC FUEL PRICE



INTERNATIONAL PRODUCT PRICES OF BASKET USED IN BASIC FUEL PRICE



BASIC FUEL PRICE IN SA CENTS PER LITRE

