

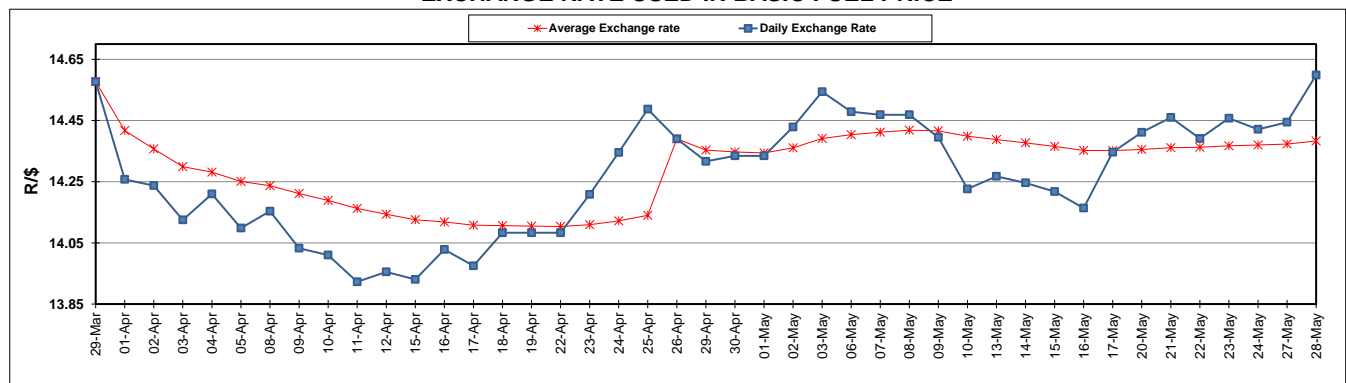
	PETROL 95 ULP	PETROL 93 ULP & LRP	DIESEL 0.05%	DIESEL 0.005%	ILL. PAR.
GAUTENG PUMP PRICE (SA c/l) AS FROM 01/05/2019	1 667.000	1 648.000	-	-	-
WHOLESALE PRICE (SA c/l) AS FROM 01/05/2019	-	-	1 488.120	1 494.520	965.678
SINGLE NATIONAL MAXIMUM RETAIL PRICE	-	-	-	-	1 231.000
BASIC FUEL PRICE - 28/05/2019 (SA c/l)	750.535	739.092	790.804	796.865	783.185
PRESS RELEASE CONTRIBUTION TO BFP 01/05/2019 - 28/05/2019 (SA c/l)	777.170	768.170	784.630	791.030	781.128
UNIT OVER/(UNDER) RECOVERY - 28/05/2019 (SA c/l)	26.635	29.078	(6.174)	(5.835)	(2.057)
AVERAGE BASIC FUEL PRICE 26/04/2019 - 28/05/2019	758.730	747.576	795.063	801.884	789.448
AVERAGE UNIT OVER/(UNDER) RECOVERY 26/04/2019 - 28/05/2019	11.396	13.551	(10.563)	(10.854)	(8.711)

ANALYSIS MOVEMENT OF AVERAGE OVER/(UNDER) RECOVERY

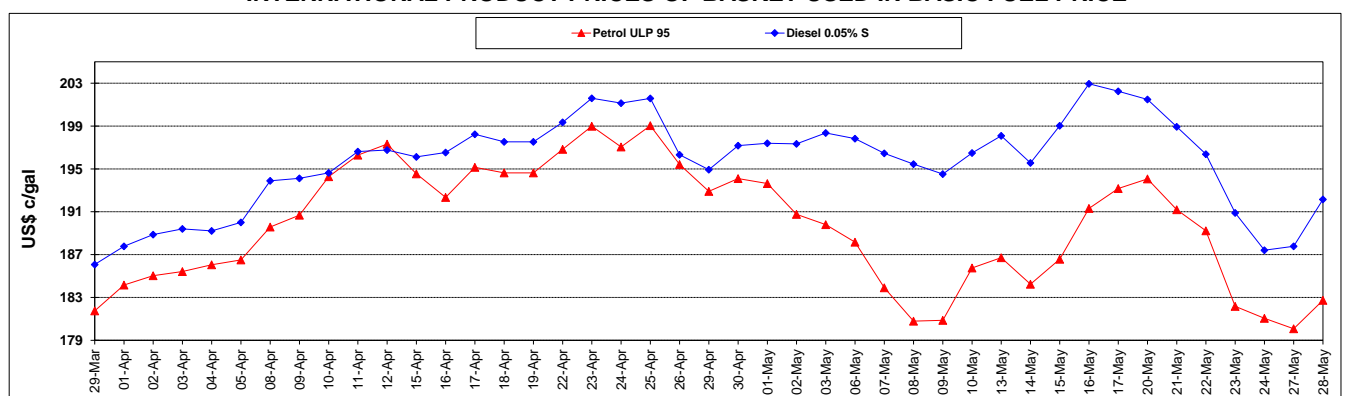
	PETROL 95	PETROL 93	DIESEL 0.05%	DIESEL 0.005%	ILL. PAR.
- MOVEMENT IN INTERNATIONAL PRODUCT PRICES	24.216	26.181	2.869	2.694	4.627
- MOVEMENT IN EXCHANGE RATE	(12.819)	(12.630)	(13.432)	(13.548)	(13.338)
AVERAGE UNIT OVER/(UNDER) RECOVERY 26/04/2019 - 28/05/2019	11.396	13.551	(10.563)	(10.854)	(8.711)

R/\$ EXCHANGE RATE - (R/\$14.5986 - 28/05/2019)

EXCHANGE RATE USED IN BASIC FUEL PRICE



INTERNATIONAL PRODUCT PRICES OF BASKET USED IN BASIC FUEL PRICE



BASIC FUEL PRICE IN SA CENTS PER LITRE

