

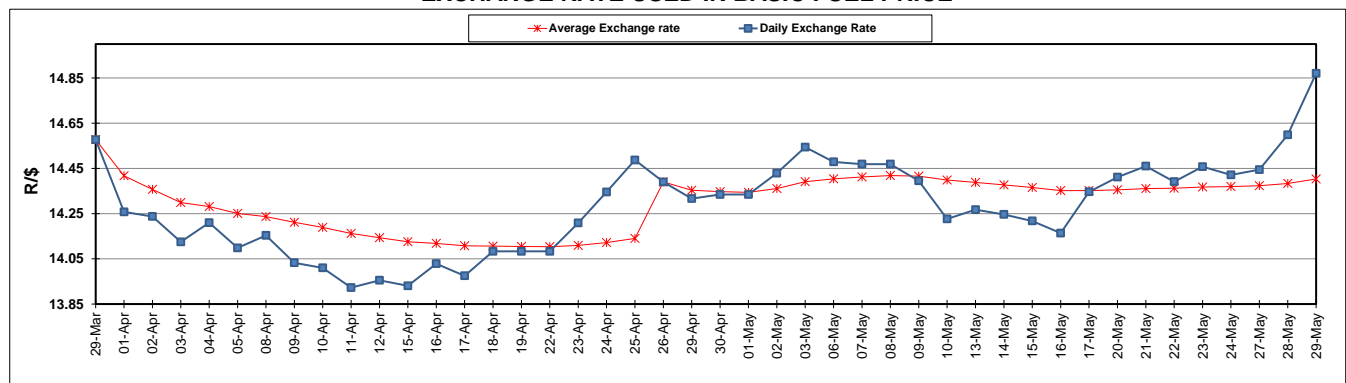
	PETROL 95 ULP	PETROL 93 ULP & LRP	DIESEL 0.05%	DIESEL 0.005%	ILL. PAR.
GAUTENG PUMP PRICE (SA c/l) AS FROM 01/05/2019	1 667.000	1 648.000	-	-	-
WHOLESALE PRICE (SA c/l) AS FROM 01/05/2019	-	-	1 488.120	1 494.520	965.678
SINGLE NATIONAL MAXIMUM RETAIL PRICE	-	-	-	-	1 231.000
BASIC FUEL PRICE - 29/05/2019 (SA c/l)	744.108	729.808	790.356	796.530	787.596
PRESS RELEASE CONTRIBUTION TO BFP 01/05/2019 - 29/05/2019 (SA c/l)	777.170	768.170	784.630	791.030	781.128
UNIT OVER/(UNDER) RECOVERY - 29/05/2019 (SA c/l)	33.062	38.362	(5.726)	(5.500)	(6.468)
AVERAGE BASIC FUEL PRICE 26/04/2019 - 29/05/2019	758.121	746.835	794.867	801.661	789.371
AVERAGE UNIT OVER/(UNDER) RECOVERY 26/04/2019 - 29/05/2019	12.299	14.585	(10.362)	(10.631)	(8.618)

### ANALYSIS MOVEMENT OF AVERAGE OVER/(UNDER) RECOVERY

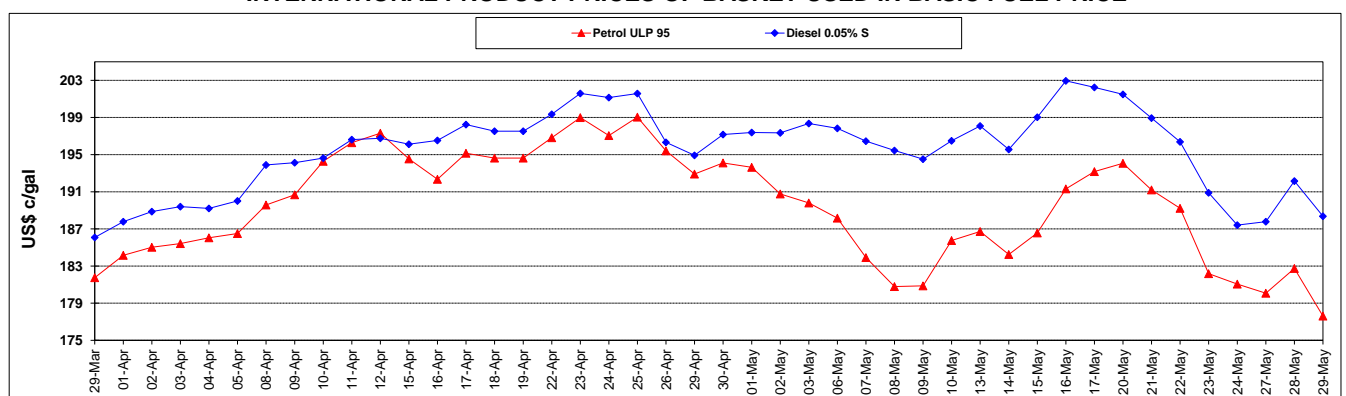
	PETROL 95	PETROL 93	DIESEL 0.05%	DIESEL 0.005%	ILL. PAR.
- MOVEMENT IN INTERNATIONAL PRODUCT PRICES	26.158	28.237	4.168	4.024	5.812
- MOVEMENT IN EXCHANGE RATE	(13.859)	(13.652)	(14.530)	(14.655)	(14.430)
AVERAGE UNIT OVER/(UNDER) RECOVERY 26/04/2019 - 29/05/2019	12.299	14.585	(10.362)	(10.631)	(8.618)

### R/\$ EXCHANGE RATE - (R/\$14.8703 - 29/05/2019)

#### EXCHANGE RATE USED IN BASIC FUEL PRICE



#### INTERNATIONAL PRODUCT PRICES OF BASKET USED IN BASIC FUEL PRICE



#### BASIC FUEL PRICE IN SA CENTS PER LITRE

