

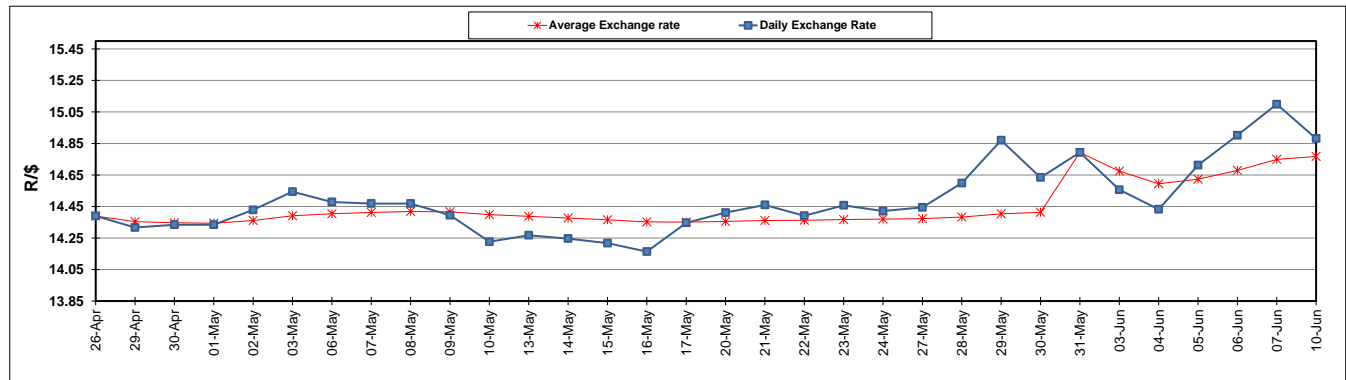
	PETROL 95 ULP	PETROL 93 ULP & LRP	DIESEL 0.05%	DIESEL 0.005%	ILL. PAR.
GAUTENG PUMP PRICE (SA c/l) AS FROM 05/06/2019	1 676.000	1 657.000	-	-	-
WHOLESALE PRICE (SA c/l) AS FROM 05/06/2019	-	-	1 521.280	1 527.680	973.678
SINGLE NATIONAL MAXIMUM RETAIL PRICE	-	-	-	-	1 241.000
BASIC FUEL PRICE - 10/06/2019 (SA c/l)	693.149	683.288	731.933	737.466	733.080
PRESS RELEASE CONTRIBUTION TO BFP 05/06/2019 - 10/06/2019 (SA c/l)	764.010	755.010	794.630	801.030	789.128
UNIT OVER/(UNDER) RECOVERY - 10/06/2019 (SA c/l)	70.861	71.722	62.697	63.564	56.048
AVERAGE BASIC FUEL PRICE 31/05/2019 - 10/06/2019	676.243	666.386	723.146	728.590	724.151
AVERAGE UNIT OVER/(UNDER) RECOVERY 31/05/2019 - 10/06/2019	93.407	94.264	67.198	68.154	61.548

### ANALYSIS MOVEMENT OF AVERAGE OVER/(UNDER) RECOVERY

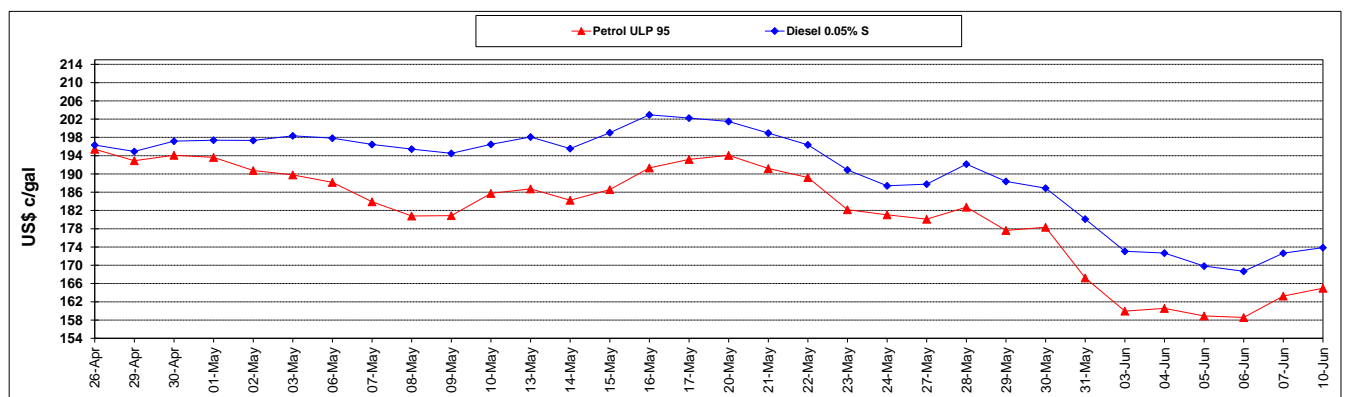
	PETROL 95	PETROL 93	DIESEL 0.05%	DIESEL 0.005%	ILL. PAR.
- MOVEMENT IN INTERNATIONAL PRODUCT PRICES	109.677	110.296	84.596	85.683	78.970
- MOVEMENT IN EXCHANGE RATE	(16.270)	(16.032)	(17.398)	(17.529)	(17.422)
AVERAGE UNIT OVER/(UNDER) RECOVERY 31/05/2019 - 10/06/2019	93.407	94.264	67.198	68.154	61.548

### R/\$ EXCHANGE RATE - (R/\$14.8813 - 10/06/2019)

#### EXCHANGE RATE USED IN BASIC FUEL PRICE



#### INTERNATIONAL PRODUCT PRICES OF BASKET USED IN BASIC FUEL PRICE



#### BASIC FUEL PRICE IN SA CENTS PER LITRE

