

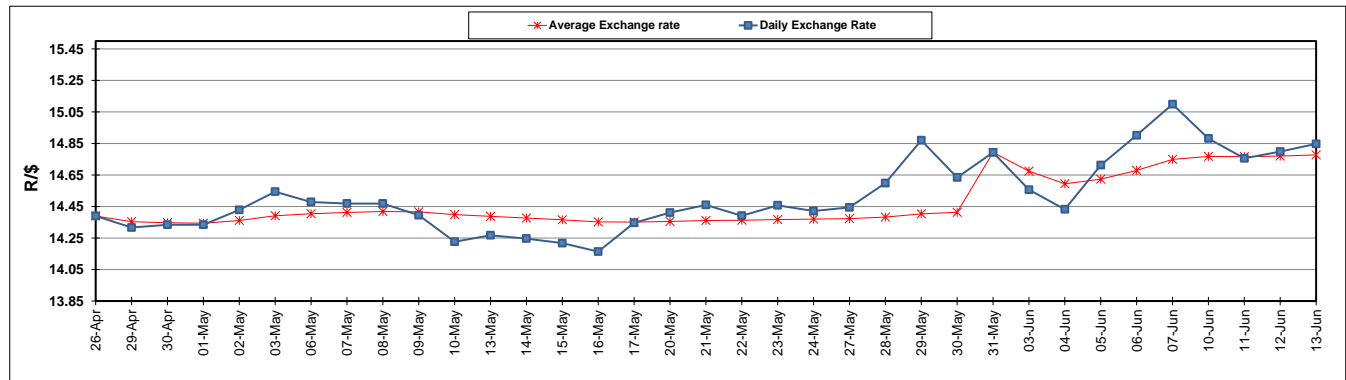
	PETROL 95 ULP	PETROL 93 ULP & LRP	DIESEL 0.05%	DIESEL 0.005%	ILL. PAR.
GAUTENG PUMP PRICE (SA c/l) AS FROM 05/06/2019	1 676.000	1 657.000	-	-	-
WHOLESALE PRICE (SA c/l) AS FROM 05/06/2019	-	-	1 521.280	1 527.680	973.678
SINGLE NATIONAL MAXIMUM RETAIL PRICE	-	-	-	-	1 241.000
BASIC FUEL PRICE - 13/06/2019 (SA c/l)	682.726	670.397	725.051	730.210	729.000
PRESS RELEASE CONTRIBUTION TO BFP 05/06/2019 - 13/06/2019 (SA c/l)	764.010	755.010	794.630	801.030	789.128
UNIT OVER/(UNDER) RECOVERY - 13/06/2019 (SA c/l)	81.284	84.613	69.579	70.820	60.128
AVERAGE BASIC FUEL PRICE 31/05/2019 - 13/06/2019	678.391	668.001	722.604	728.044	724.302
AVERAGE UNIT OVER/(UNDER) RECOVERY 31/05/2019 - 13/06/2019	89.567	90.957	69.026	69.986	62.427

ANALYSIS MOVEMENT OF AVERAGE OVER/(UNDER) RECOVERY

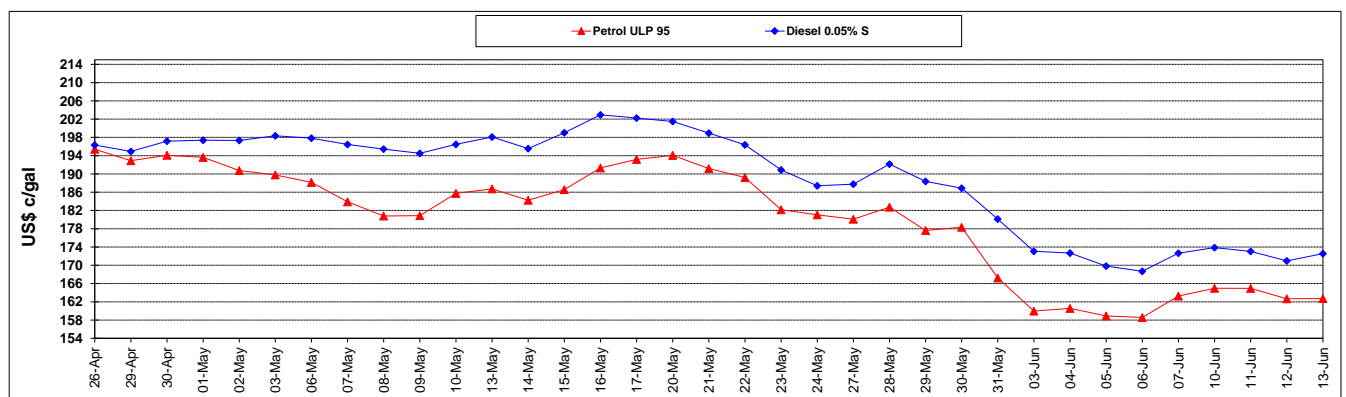
	PETROL 95	PETROL 93	DIESEL 0.05%	DIESEL 0.005%	ILL. PAR.
- MOVEMENT IN INTERNATIONAL PRODUCT PRICES	106.323	107.456	86.874	87.968	80.316
- MOVEMENT IN EXCHANGE RATE	(16.756)	(16.499)	(17.848)	(17.982)	(17.890)
AVERAGE UNIT OVER/(UNDER) RECOVERY 31/05/2019 - 13/06/2019	89.567	90.957	69.026	69.986	62.427

R/\$ EXCHANGE RATE - (R/\$14.8474 - 13/06/2019)

EXCHANGE RATE USED IN BASIC FUEL PRICE



INTERNATIONAL PRODUCT PRICES OF BASKET USED IN BASIC FUEL PRICE



BASIC FUEL PRICE IN SA CENTS PER LITRE

