

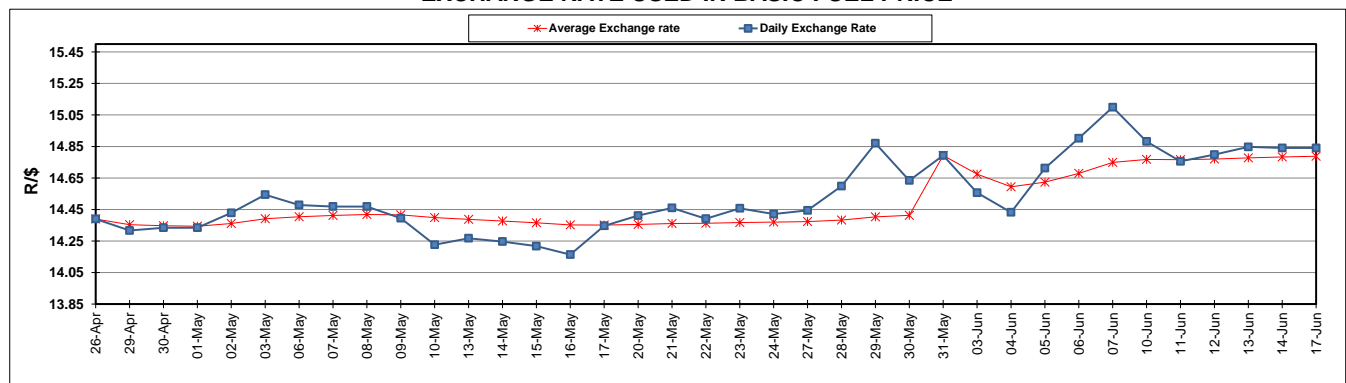
	PETROL 95 ULP	PETROL 93 ULP & LRP	DIESEL 0.05%	DIESEL 0.005%	ILL. PAR.
GAUTENG PUMP PRICE (SA c/l) AS FROM 05/06/2019	1 676.000	1 657.000	-	-	-
WHOLESALE PRICE (SA c/l) AS FROM 05/06/2019	-	-	1 521.280	1 527.680	973.678
SINGLE NATIONAL MAXIMUM RETAIL PRICE	-	-	-	-	1 241.000
BASIC FUEL PRICE - 17/06/2019 (SA c/l)	675.131	664.878	726.778	732.429	734.037
PRESS RELEASE CONTRIBUTION TO BFP 05/06/2019 - 17/06/2019 (SA c/l)	764.010	755.010	794.630	801.030	789.128
UNIT OVER/(UNDER) RECOVERY - 17/06/2019 (SA c/l)	88.879	90.132	67.852	68.601	55.091
AVERAGE BASIC FUEL PRICE 31/05/2019 - 17/06/2019	678.360	667.821	723.363	728.827	725.850
AVERAGE UNIT OVER/(UNDER) RECOVERY 31/05/2019 - 17/06/2019	88.940	90.480	68.767	69.703	61.278

### ANALYSIS MOVEMENT OF AVERAGE OVER/(UNDER) RECOVERY

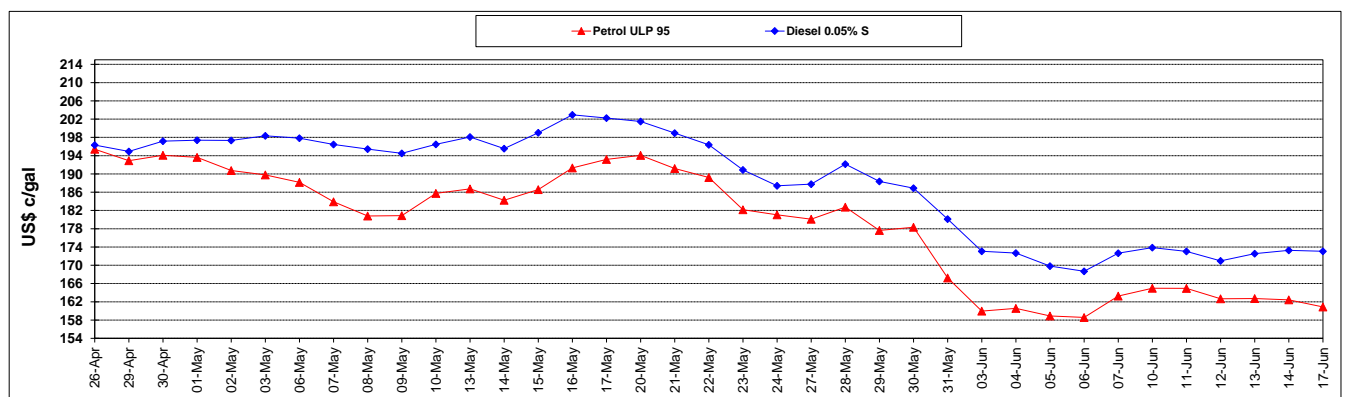
	PETROL 95	PETROL 93	DIESEL 0.05%	DIESEL 0.005%	ILL. PAR.
- MOVEMENT IN INTERNATIONAL PRODUCT PRICES	106.165	107.436	87.135	88.209	79.709
- MOVEMENT IN EXCHANGE RATE	(17.225)	(16.957)	(18.368)	(18.506)	(18.431)
AVERAGE UNIT OVER/(UNDER) RECOVERY 31/05/2019 - 17/06/2019	88.940	90.480	68.767	69.703	61.278

**R/\$ EXCHANGE RATE - (R/\$14.8403 - 17/06/2019)**

### EXCHANGE RATE USED IN BASIC FUEL PRICE



### INTERNATIONAL PRODUCT PRICES OF BASKET USED IN BASIC FUEL PRICE



### BASIC FUEL PRICE IN SA CENTS PER LITRE

