

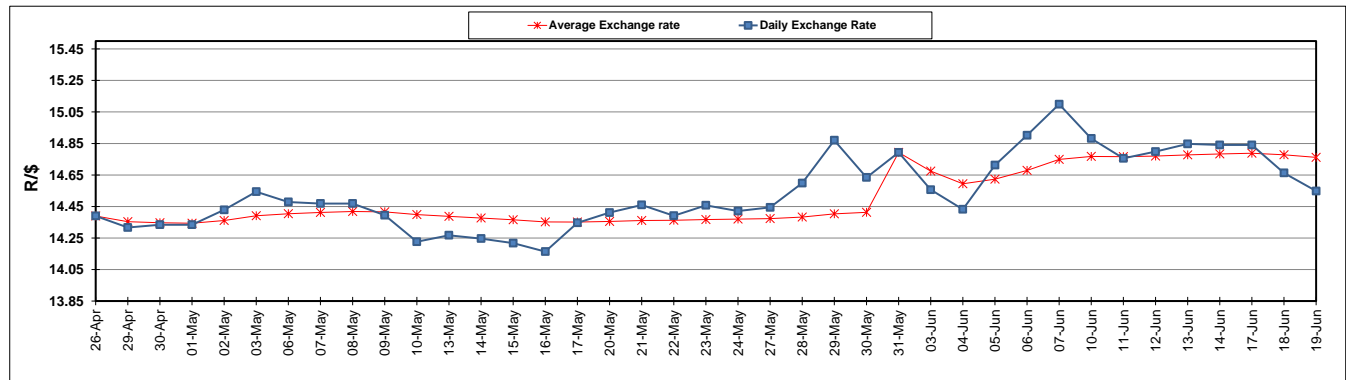
	PETROL 95 ULP	PETROL 93 ULP & LRP	DIESEL 0.05%	DIESEL 0.005%	ILL. PAR.
GAUTENG PUMP PRICE (SA c/l) AS FROM 05/06/2019	1 676.000	1 657.000	-	-	-
WHOLESALE PRICE (SA c/l) AS FROM 05/06/2019	-	-	1 521.280	1 527.680	973.678
SINGLE NATIONAL MAXIMUM RETAIL PRICE	-	-	-	-	1 241.000
BASIC FUEL PRICE - 19/06/2019 (SA c/l)	662.563	652.806	715.220	720.995	720.294
PRESS RELEASE CONTRIBUTION TO BFP 05/06/2019 - 19/06/2019 (SA c/l)	764.010	755.010	794.630	801.030	789.128
UNIT OVER/(UNDER) RECOVERY - 19/06/2019 (SA c/l)	101.447	102.204	79.410	80.035	68.834
AVERAGE BASIC FUEL PRICE 31/05/2019 - 19/06/2019	676.279	665.845	722.272	727.762	725.249
AVERAGE UNIT OVER/(UNDER) RECOVERY 31/05/2019 - 19/06/2019	90.551	91.985	70.216	71.125	62.165

ANALYSIS MOVEMENT OF AVERAGE OVER/(UNDER) RECOVERY

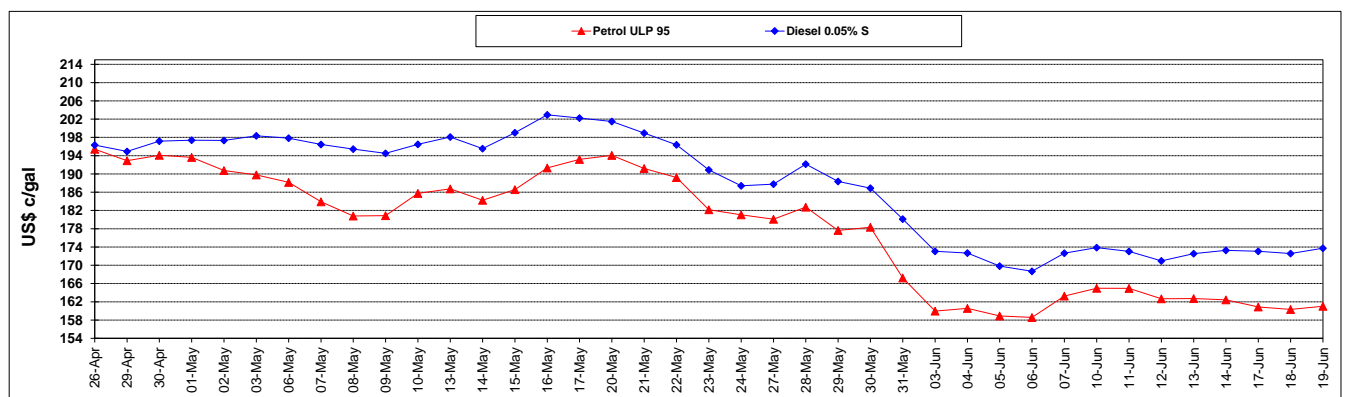
	PETROL 95	PETROL 93	DIESEL 0.05%	DIESEL 0.005%	ILL. PAR.
- MOVEMENT IN INTERNATIONAL PRODUCT PRICES	106.553	107.740	87.305	88.345	79.326
- MOVEMENT IN EXCHANGE RATE	(16.002)	(15.755)	(17.090)	(17.220)	(17.161)
AVERAGE UNIT OVER/(UNDER) RECOVERY 31/05/2019 - 19/06/2019	90.551	91.985	70.216	71.125	62.165

R/\$ EXCHANGE RATE - (R/\$14.5480 - 19/06/2019)

EXCHANGE RATE USED IN BASIC FUEL PRICE



INTERNATIONAL PRODUCT PRICES OF BASKET USED IN BASIC FUEL PRICE



BASIC FUEL PRICE IN SA CENTS PER LITRE

