

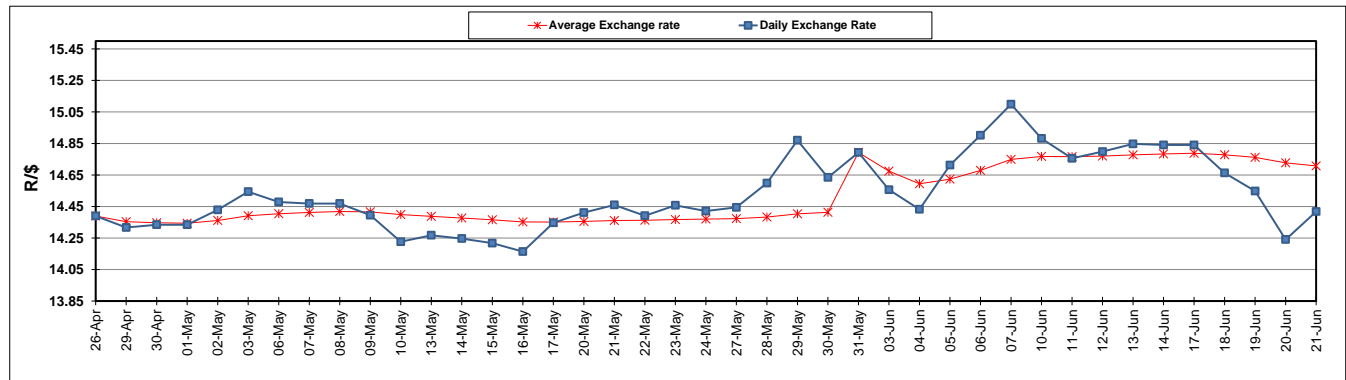
	PETROL 95 ULP	PETROL 93 ULP & LRP	DIESEL 0.05%	DIESEL 0.005%	ILL. PAR.
GAUTENG PUMP PRICE (SA c/l) AS FROM 05/06/2019	1 676.000	1 657.000	-	-	-
WHOLESALE PRICE (SA c/l) AS FROM 05/06/2019	-	-	1 521.280	1 527.680	973.678
SINGLE NATIONAL MAXIMUM RETAIL PRICE	-	-	-	-	1 241.000
BASIC FUEL PRICE - 21/06/2019 (SA c/l)	694.914	684.952	742.000	747.068	747.058
PRESS RELEASE CONTRIBUTION TO BFP 05/06/2019 - 21/06/2019 (SA c/l)	764.010	755.010	794.630	801.030	789.128
UNIT OVER/(UNDER) RECOVERY - 21/06/2019 (SA c/l)	69.096	70.058	52.630	53.962	42.070
AVERAGE BASIC FUEL PRICE 31/05/2019 - 21/06/2019	676.926	666.577	723.428	728.870	726.531
AVERAGE UNIT OVER/(UNDER) RECOVERY 31/05/2019 - 21/06/2019	89.552	90.900	69.327	70.285	61.097

ANALYSIS MOVEMENT OF AVERAGE OVER/(UNDER) RECOVERY

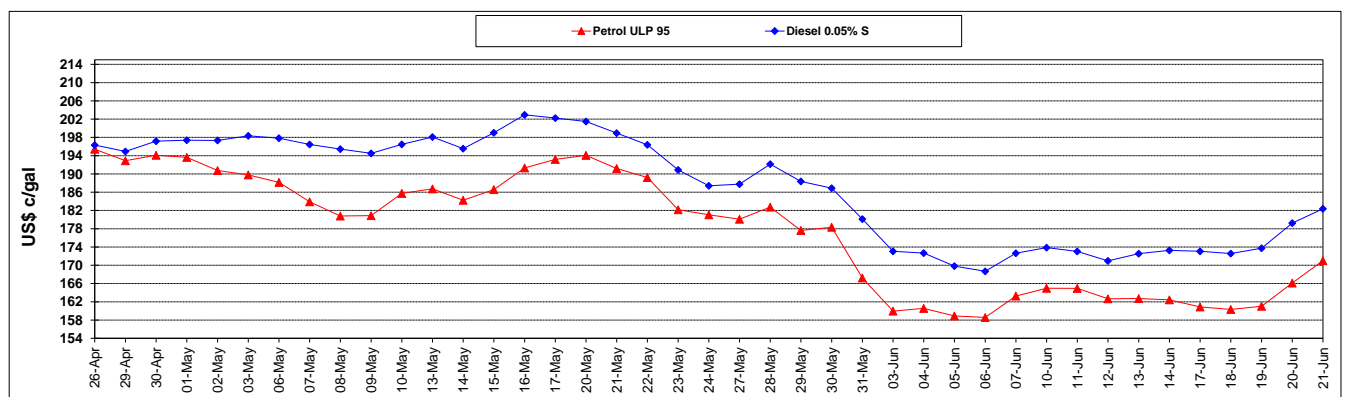
	PETROL 95	PETROL 93	DIESEL 0.05%	DIESEL 0.005%	ILL. PAR.
- MOVEMENT IN INTERNATIONAL PRODUCT PRICES	103.138	104.280	83.847	84.914	75.679
- MOVEMENT IN EXCHANGE RATE	(13.586)	(13.379)	(14.520)	(14.629)	(14.582)
AVERAGE UNIT OVER/(UNDER) RECOVERY 31/05/2019 - 21/06/2019	89.552	90.900	69.327	70.285	61.097

R/\$ EXCHANGE RATE - (R/\$14.4178 - 21/06/2019)

EXCHANGE RATE USED IN BASIC FUEL PRICE



INTERNATIONAL PRODUCT PRICES OF BASKET USED IN BASIC FUEL PRICE



BASIC FUEL PRICE IN SA CENTS PER LITRE

