

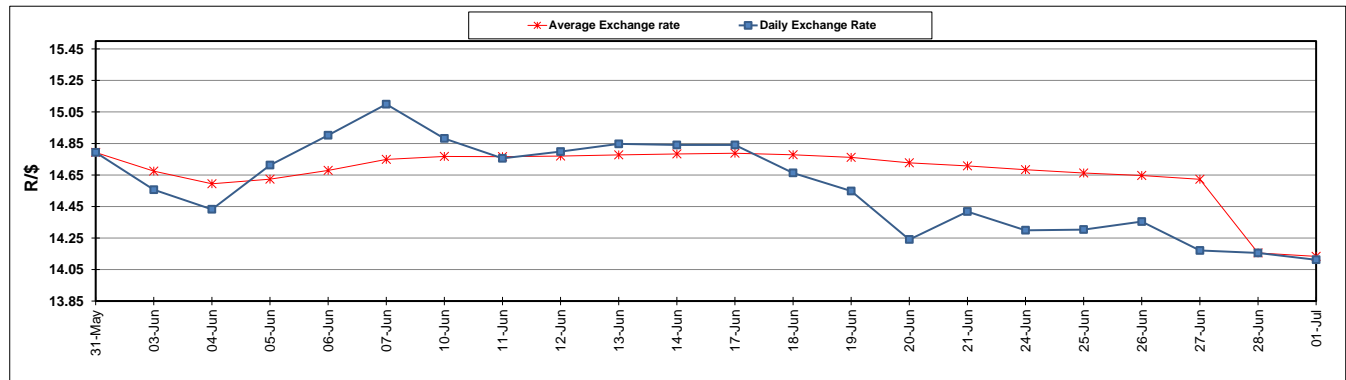
	PETROL 95 ULP	PETROL 93 ULP & LRP	DIESEL 0.05%	DIESEL 0.005%	ILL. PAR.
GAUTENG PUMP PRICE (SA c/l) AS FROM 03/07/2019	1 581.000	1 561.000	-	-	-
WHOLESALE PRICE (SA c/l) AS FROM 03/07/2019	-	-	1 446.500	1 451.900	916.678
SINGLE NATIONAL MAXIMUM RETAIL PRICE	-	-	-	-	1 165.000
BASIC FUEL PRICE - 01/07/2019 (SA c/l)	700.122	689.700	738.030	742.592	745.030
PRESS RELEASE CONTRIBUTION TO BFP 28/06/2019 - 01/07/2019 (SA c/l)	764.010	755.010	794.630	801.030	789.128
UNIT OVER/(UNDER) RECOVERY - 01/07/2019 (SA c/l)	63.888	65.310	56.600	58.438	44.098
AVERAGE BASIC FUEL PRICE 28/06/2019 - 01/07/2019	699.939	690.252	738.703	743.273	745.044
AVERAGE UNIT OVER/(UNDER) RECOVERY 28/06/2019 - 01/07/2019	64.072	64.759	55.927	57.758	44.085

ANALYSIS MOVEMENT OF AVERAGE OVER/(UNDER) RECOVERY

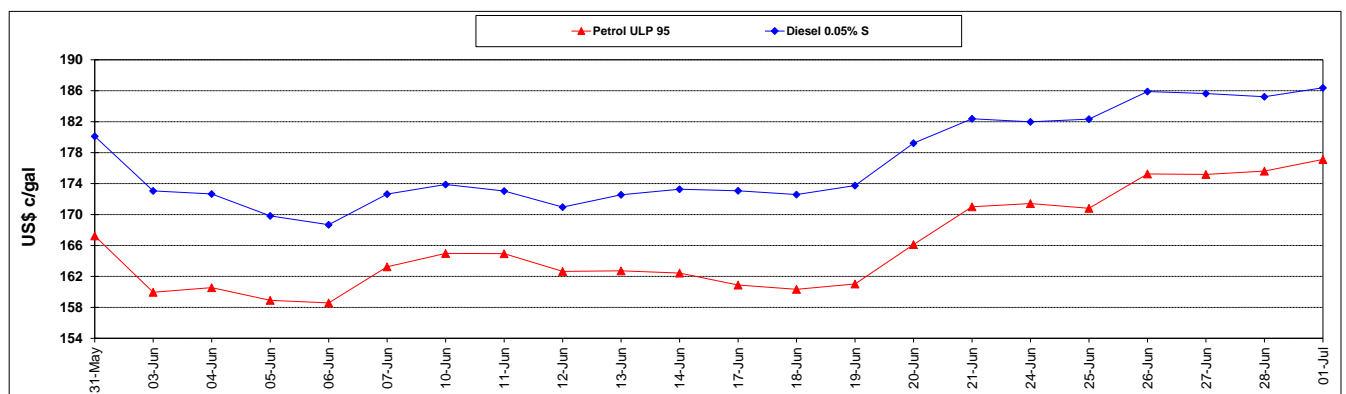
	PETROL 95	PETROL 93	DIESEL 0.05%	DIESEL 0.005%	ILL. PAR.
- MOVEMENT IN INTERNATIONAL PRODUCT PRICES	39.844	40.866	30.358	32.030	18.296
- MOVEMENT IN EXCHANGE RATE	24.227	23.892	25.569	25.727	25.788
AVERAGE UNIT OVER/(UNDER) RECOVERY 28/06/2019 - 01/07/2019	64.072	64.759	55.927	57.758	44.085

R/\$ EXCHANGE RATE - (R/\$14.1119 - 01/07/2019)

EXCHANGE RATE USED IN BASIC FUEL PRICE



INTERNATIONAL PRODUCT PRICES OF BASKET USED IN BASIC FUEL PRICE



BASIC FUEL PRICE IN SA CENTS PER LITRE

