

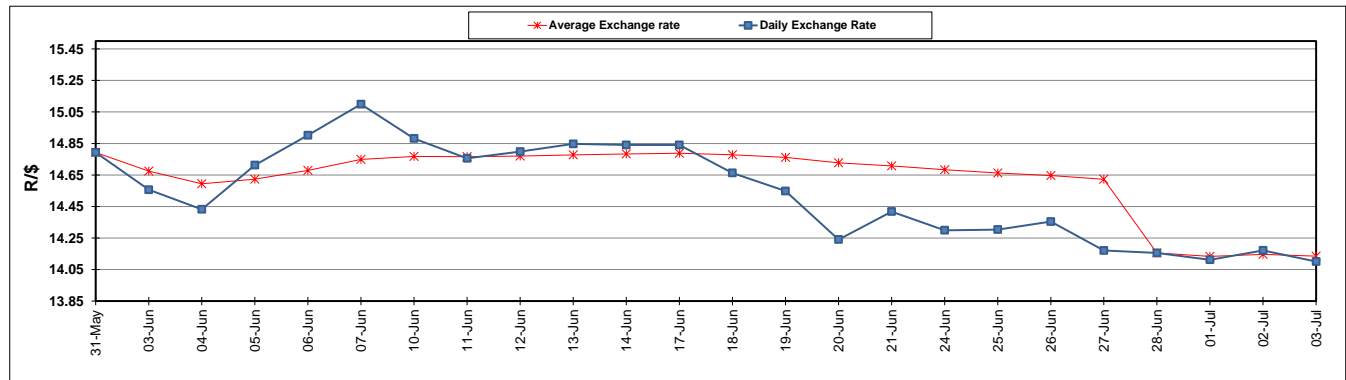
	PETROL 95 ULP	PETROL 93 ULP & LRP	DIESEL 0.05%	DIESEL 0.005%	ILL. PAR.
GAUTENG PUMP PRICE (SA c/l) AS FROM 03/07/2019	1 581.000	1 561.000	-	-	-
WHOLESALE PRICE (SA c/l) AS FROM 03/07/2019	-	-	1 446.500	1 451.900	916.678
SINGLE NATIONAL MAXIMUM RETAIL PRICE	-	-	-	-	1 165.000
BASIC FUEL PRICE - 03/07/2019 (SA c/l)	682.872	671.220	708.360	713.787	715.470
PRESS RELEASE CONTRIBUTION TO BFP 03/07/2019 - 03/07/2019 (SA c/l)	677.790	667.790	728.630	734.030	732.128
UNIT OVER/(UNDER) RECOVERY - 03/07/2019 (SA c/l)	(5.082)	(3.430)	20.270	20.243	16.658
AVERAGE BASIC FUEL PRICE 28/06/2019 - 03/07/2019	693.174	683.389	728.177	733.014	734.592
AVERAGE UNIT OVER/(UNDER) RECOVERY 28/06/2019 - 03/07/2019	49.281	49.817	49.953	51.266	40.286

ANALYSIS MOVEMENT OF AVERAGE OVER/(UNDER) RECOVERY

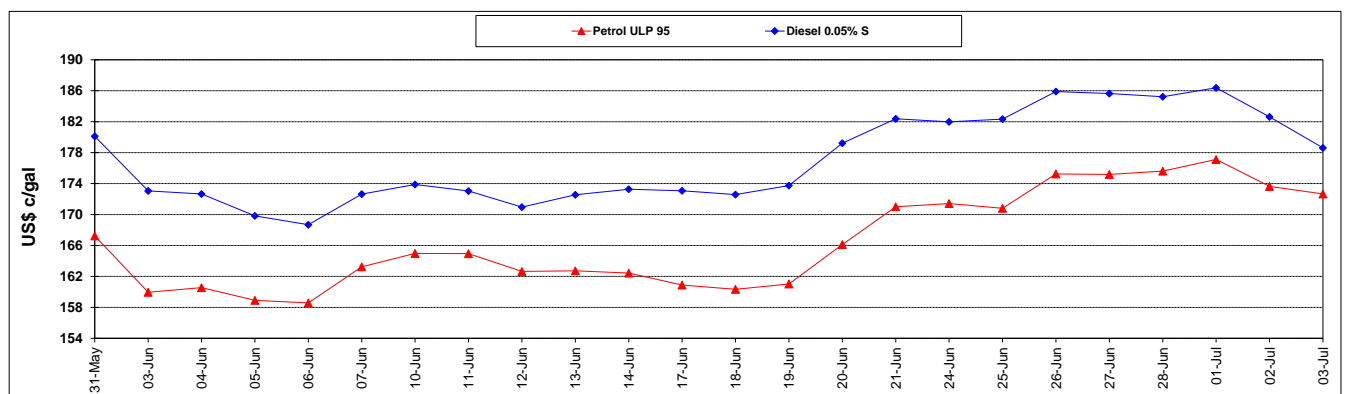
	PETROL 95	PETROL 93	DIESEL 0.05%	DIESEL 0.005%	ILL. PAR.
- MOVEMENT IN INTERNATIONAL PRODUCT PRICES	25.354	26.227	24.818	25.964	14.930
- MOVEMENT IN EXCHANGE RATE	23.927	23.589	25.135	25.302	25.356
AVERAGE UNIT OVER/(UNDER) RECOVERY 28/06/2019 - 03/07/2019	49.281	49.817	49.953	51.266	40.286

R/\$ EXCHANGE RATE - (R/\$14.1009 - 03/07/2019)

EXCHANGE RATE USED IN BASIC FUEL PRICE



INTERNATIONAL PRODUCT PRICES OF BASKET USED IN BASIC FUEL PRICE



BASIC FUEL PRICE IN SA CENTS PER LITRE

