

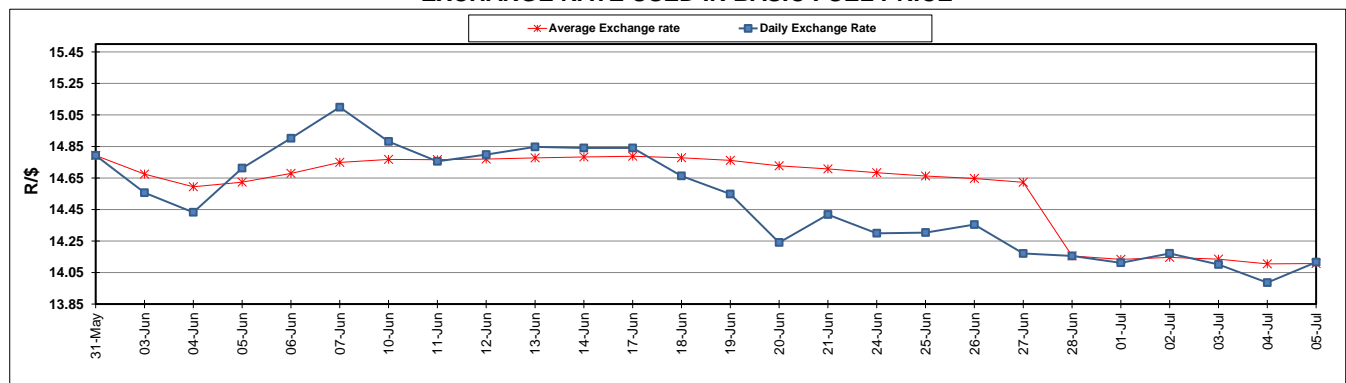
	PETROL 95 ULP	PETROL 93 ULP & LRP	DIESEL 0.05%	DIESEL 0.005%	ILL. PAR.
GAUTENG PUMP PRICE (SA c/l) AS FROM 03/07/2019	1 581.000	1 561.000	-	-	-
WHOLESALE PRICE (SA c/l) AS FROM 03/07/2019	-	-	1 446.500	1 451.900	916.678
SINGLE NATIONAL MAXIMUM RETAIL PRICE	-	-	-	-	1 165.000
BASIC FUEL PRICE - 05/07/2019 (SA c/l)	701.899	687.327	711.386	716.904	720.113
PRESS RELEASE CONTRIBUTION TO BFP 03/07/2019 - 05/07/2019 (SA c/l)	677.790	667.790	728.630	734.030	732.128
UNIT OVER/(UNDER) RECOVERY - 05/07/2019 (SA c/l)	(24.109)	(19.537)	17.244	17.126	12.015
AVERAGE BASIC FUEL PRICE 28/06/2019 - 05/07/2019	693.983	682.987	721.533	726.565	728.439
AVERAGE UNIT OVER/(UNDER) RECOVERY 28/06/2019 - 05/07/2019	26.917	28.413	40.098	40.965	32.189

ANALYSIS MOVEMENT OF AVERAGE OVER/(UNDER) RECOVERY

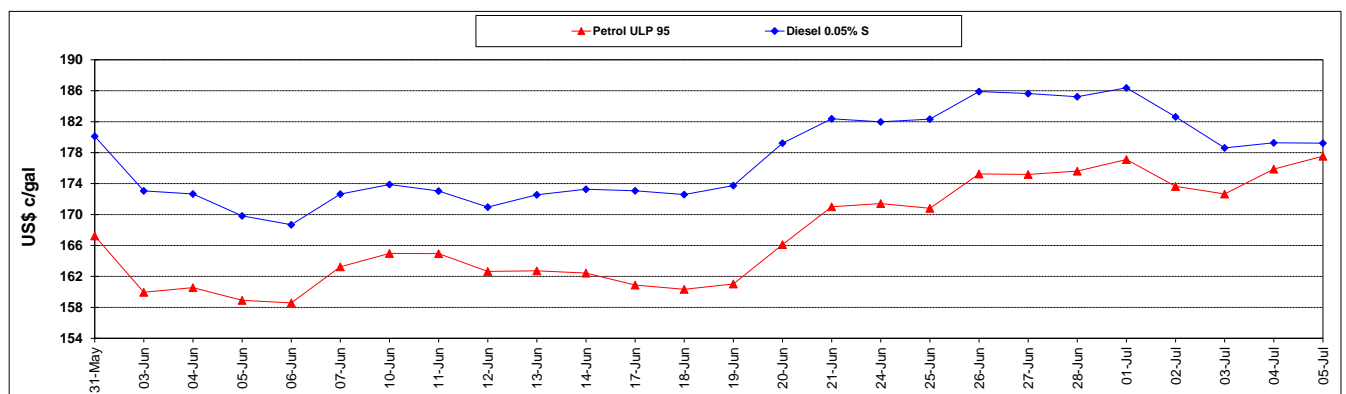
	PETROL 95	PETROL 93	DIESEL 0.05%	DIESEL 0.005%	ILL. PAR.
- MOVEMENT IN INTERNATIONAL PRODUCT PRICES	1.537	3.435	13.710	14.394	5.549
- MOVEMENT IN EXCHANGE RATE	25.380	24.978	26.387	26.571	26.640
AVERAGE UNIT OVER/(UNDER) RECOVERY 28/06/2019 - 05/07/2019	26.917	28.413	40.098	40.965	32.189

R/\$ EXCHANGE RATE - (R/\$14.1156 - 05/07/2019)

EXCHANGE RATE USED IN BASIC FUEL PRICE



INTERNATIONAL PRODUCT PRICES OF BASKET USED IN BASIC FUEL PRICE



BASIC FUEL PRICE IN SA CENTS PER LITRE

