

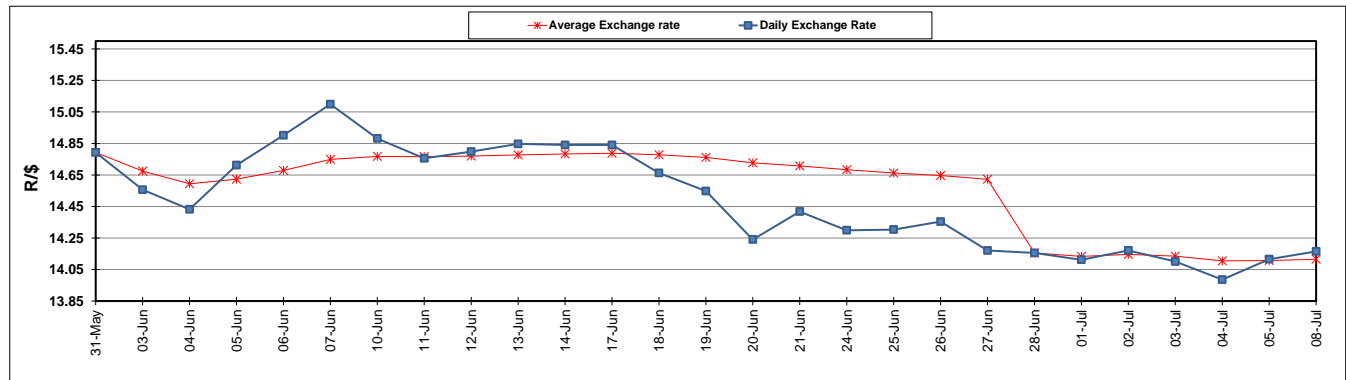
	PETROL 95 ULP	PETROL 93 ULP & LRP	DIESEL 0.05%	DIESEL 0.005%	ILL. PAR.
GAUTENG PUMP PRICE (SA c/l) AS FROM 03/07/2019	1 581.000	1 561.000	-	-	-
WHOLESALE PRICE (SA c/l) AS FROM 03/07/2019	-	-	1 446.500	1 451.900	916.678
SINGLE NATIONAL MAXIMUM RETAIL PRICE	-	-	-	-	1 165.000
BASIC FUEL PRICE - 08/07/2019 (SA c/l)	712.429	697.805	722.034	727.716	729.877
PRESS RELEASE CONTRIBUTION TO BFP 03/07/2019 - 08/07/2019 (SA c/l)	677.790	667.790	728.630	734.030	732.128
UNIT OVER/(UNDER) RECOVERY - 08/07/2019 (SA c/l)	(34.639)	(30.015)	6.596	6.314	2.251
AVERAGE BASIC FUEL PRICE 28/06/2019 - 08/07/2019	696.618	685.104	721.604	726.729	728.645
AVERAGE UNIT OVER/(UNDER) RECOVERY 28/06/2019 - 08/07/2019	18.123	20.066	35.312	36.015	27.912

### ANALYSIS MOVEMENT OF AVERAGE OVER/(UNDER) RECOVERY

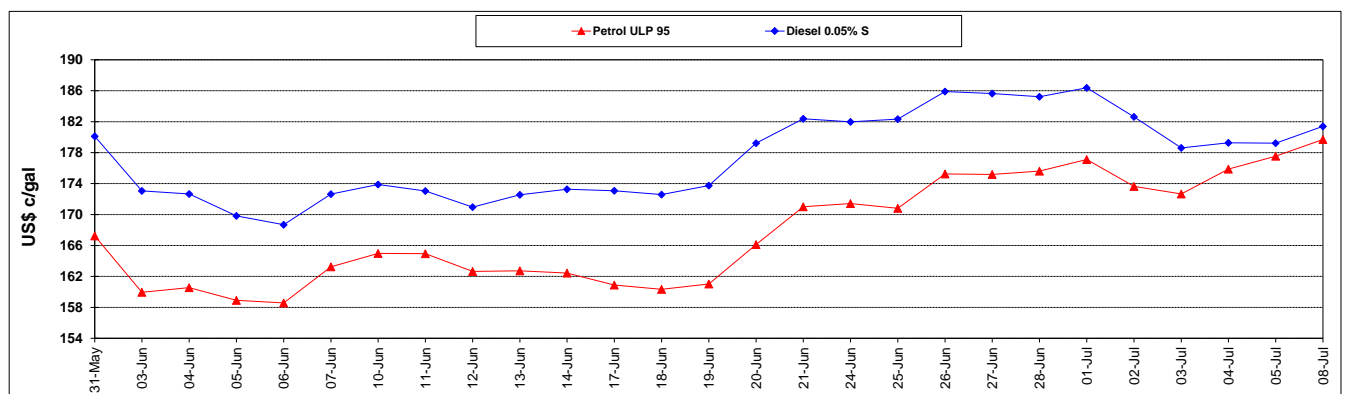
	PETROL 95	PETROL 93	DIESEL 0.05%	DIESEL 0.005%	ILL. PAR.
- MOVEMENT IN INTERNATIONAL PRODUCT PRICES	(6.928)	(4.571)	9.362	9.881	1.709
- MOVEMENT IN EXCHANGE RATE	25.051	24.637	25.950	26.134	26.203
AVERAGE UNIT OVER/(UNDER) RECOVERY 28/06/2019 - 08/07/2019	18.123	20.066	35.312	36.015	27.912

**R/\$ EXCHANGE RATE - (R/\$14.1651 - 08/07/2019)**

### EXCHANGE RATE USED IN BASIC FUEL PRICE



### INTERNATIONAL PRODUCT PRICES OF BASKET USED IN BASIC FUEL PRICE



### BASIC FUEL PRICE IN SA CENTS PER LITRE

