

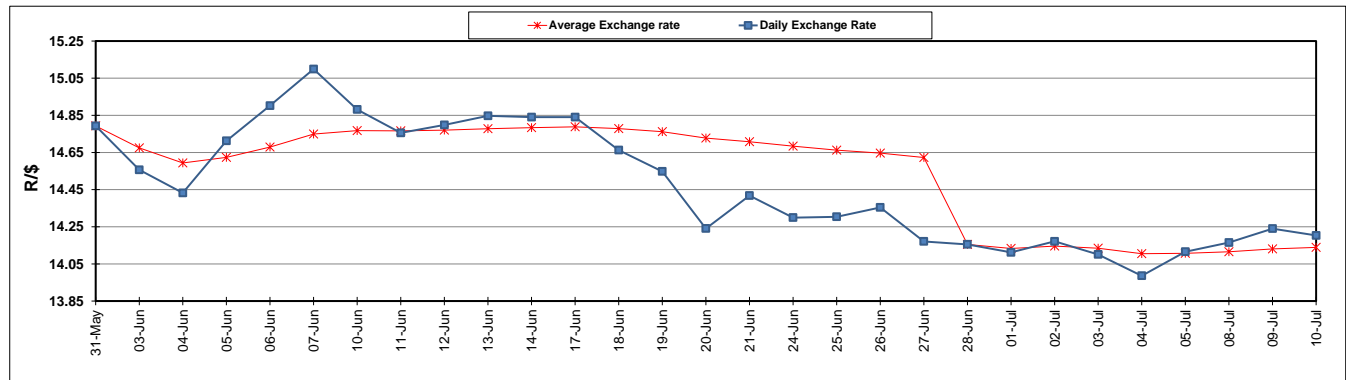
	PETROL 95 ULP	PETROL 93 ULP & LRP	DIESEL 0.05%	DIESEL 0.005%	ILL. PAR.
GAUTENG PUMP PRICE (SA c/l) AS FROM 03/07/2019	1 581.000	1 561.000	-	-	-
WHOLESALE PRICE (SA c/l) AS FROM 03/07/2019	-	-	1 446.500	1 451.900	916.678
SINGLE NATIONAL MAXIMUM RETAIL PRICE	-	-	-	-	1 165.000
BASIC FUEL PRICE - 10/07/2019 (SA c/l)	730.501	714.460	741.065	745.929	749.675
PRESS RELEASE CONTRIBUTION TO BFP 03/07/2019 - 10/07/2019 (SA c/l)	677.790	667.790	728.630	734.030	732.128
UNIT OVER/(UNDER) RECOVERY - 10/07/2019 (SA c/l)	(52.711)	(46.670)	(12.435)	(11.899)	(17.547)
AVERAGE BASIC FUEL PRICE 28/06/2019 - 10/07/2019	702.128	689.601	723.897	728.990	731.161
AVERAGE UNIT OVER/(UNDER) RECOVERY 28/06/2019 - 10/07/2019	4.402	7.262	26.733	27.374	19.967

ANALYSIS MOVEMENT OF AVERAGE OVER/(UNDER) RECOVERY

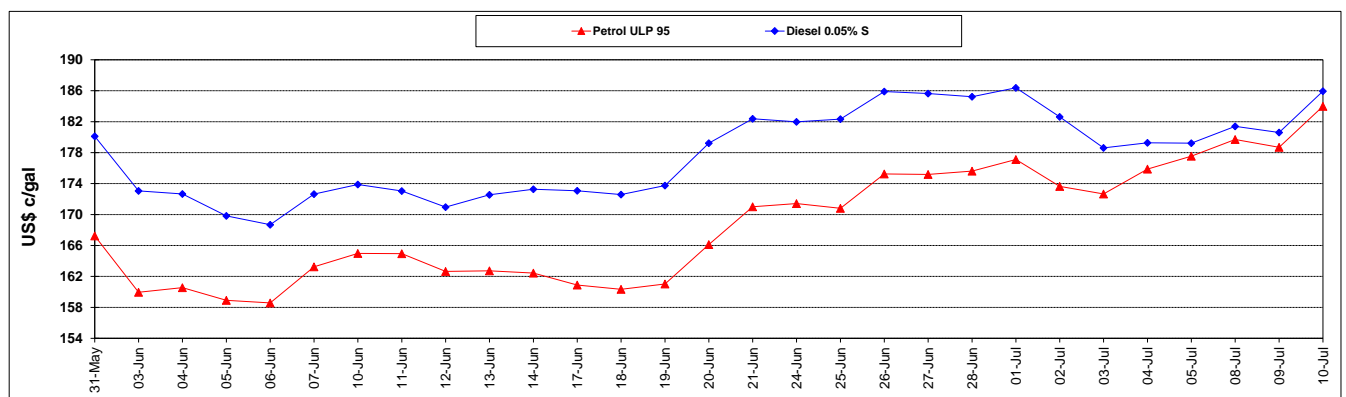
	PETROL 95	PETROL 93	DIESEL 0.05%	DIESEL 0.005%	ILL. PAR.
- MOVEMENT IN INTERNATIONAL PRODUCT PRICES	(19.628)	(16.340)	1.958	2.423	(5.057)
- MOVEMENT IN EXCHANGE RATE	24.030	23.602	24.775	24.950	25.024
AVERAGE UNIT OVER/(UNDER) RECOVERY 28/06/2019 - 10/07/2019	4.402	7.262	26.733	27.374	19.967

R/\$ EXCHANGE RATE - (R/\$14.2031 - 10/07/2019)

EXCHANGE RATE USED IN BASIC FUEL PRICE



INTERNATIONAL PRODUCT PRICES OF BASKET USED IN BASIC FUEL PRICE



BASIC FUEL PRICE IN SA CENTS PER LITRE

