

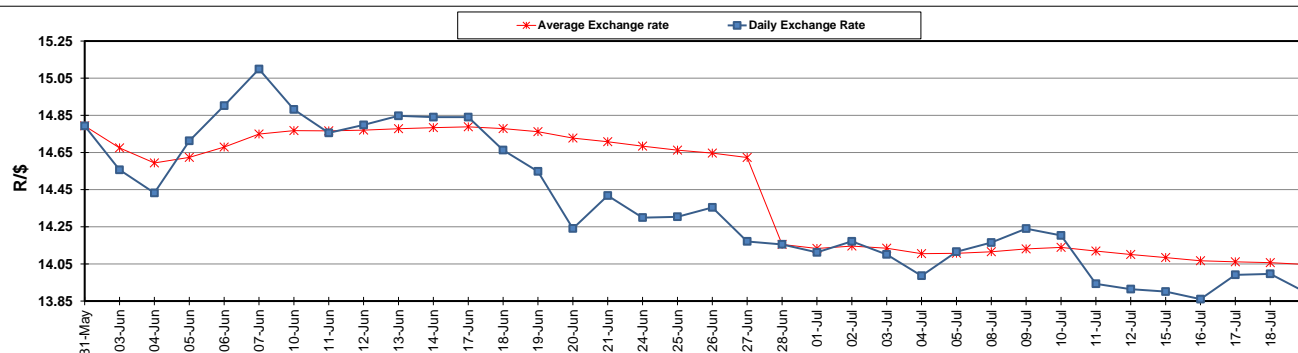
	PETROL 95 ULP	PETROL 93 ULP & LRP	DIESEL 0.05%	DIESEL 0.005%	ILL. PAR.
GAUTENG PUMP PRICE (SA c/l) AS FROM 03/07/2019	1 581.000	1 561.000	-	-	-
WHOLESALE PRICE (SA c/l) AS FROM 03/07/2019	-	-	1 446.500	1 451.900	916.678
SINGLE NATIONAL MAXIMUM RETAIL PRICE	-	-	-	-	1 165.000
BASIC FUEL PRICE - 19/07/2019 (SA c/l)	687.966	671.454	707.640	712.512	720.488
PRESS RELEASE CONTRIBUTION TO BFP 03/07/2019 - 19/07/2019 (SA c/l)	677.790	667.790	728.630	734.030	732.128
UNIT OVER/(UNDER) RECOVERY - 19/07/2019 (SA c/l)	(10.176)	(3.664)	20.990	21.518	11.640
AVERAGE BASIC FUEL PRICE 28/06/2019 - 19/07/2019	706.956	692.965	724.714	729.452	732.774
AVERAGE UNIT OVER/(UNDER) RECOVERY 28/06/2019 - 19/07/2019	(12.999)	(8.821)	16.291	17.140	10.041

ANALYSIS MOVEMENT OF AVERAGE OVER/(UNDER) RECOVERY

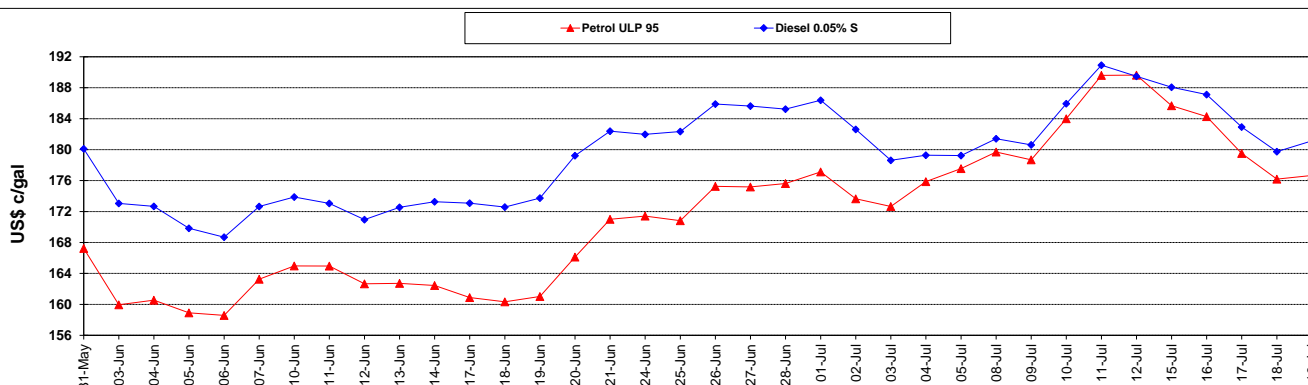
	PETROL 95	PETROL 93	DIESEL 0.05%	DIESEL 0.005%	ILL. PAR.
- MOVEMENT IN INTERNATIONAL PRODUCT PRICES	(41.969)	(37.216)	(13.405)	(12.749)	(19.984)
- MOVEMENT IN EXCHANGE RATE	28.969	28.395	29.696	29.890	30.026
AVERAGE UNIT OVER/(UNDER) RECOVERY 28/06/2019 - 19/07/2019	(12.999)	(8.821)	16.291	17.140	10.041

R/\$ EXCHANGE RATE - (R/\$13.8988 - 19/07/2019)

EXCHANGE RATE USED IN BASIC FUEL PRICE



INTERNATIONAL PRODUCT PRICES OF BASKET USED IN BASIC FUEL PRICE



BASIC FUEL PRICE IN SA CENTS PER LITRE

