

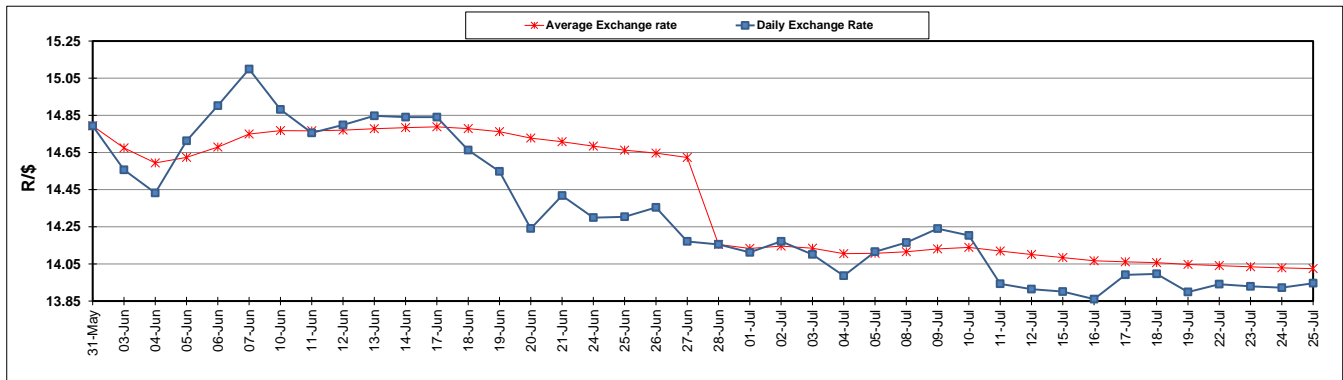
	PETROL 95 ULP	PETROL 93 ULP & LRP	DIESEL 0.05%	DIESEL 0.005%	ILL. PAR.
GAUTENG PUMP PRICE (SA c/l) AS FROM 03/07/2019	1 581.000	1 561.000	-	-	-
WHOLESALE PRICE (SA c/l) AS FROM 03/07/2019	-	-	1 446.500	1 451.900	916.678
SINGLE NATIONAL MAXIMUM RETAIL PRICE	-	-	-	-	1 165.000
BASIC FUEL PRICE - 25/07/2019 (SA c/l)	688.376	671.037	723.255	726.876	731.611
PRESS RELEASE CONTRIBUTION TO BFP 03/07/2019 - 25/07/2019 (SA c/l)	677.790	667.790	728.630	734.030	732.128
UNIT OVER/(UNDER) RECOVERY - 25/07/2019 (SA c/l)	(10.586)	(3.247)	5.375	7.154	0.517
AVERAGE BASIC FUEL PRICE 28/06/2019 - 25/07/2019	703.039	688.459	724.160	728.765	732.475
AVERAGE UNIT OVER/(UNDER) RECOVERY 28/06/2019 - 25/07/2019	(12.316)	(7.586)	14.370	15.315	8.203

### ANALYSIS MOVEMENT OF AVERAGE OVER/(UNDER) RECOVERY

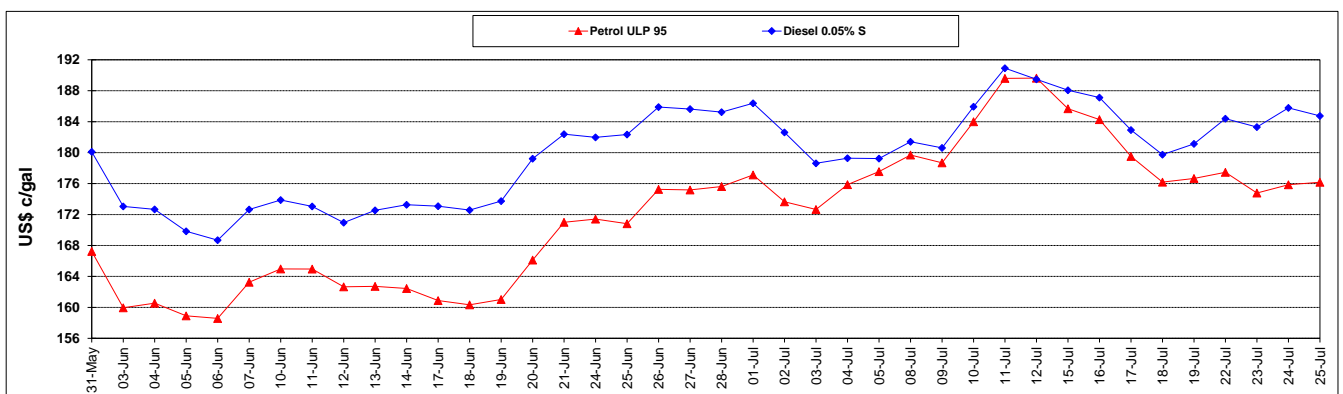
	PETROL 95	PETROL 93	DIESEL 0.05%	DIESEL 0.005%	ILL. PAR.
- MOVEMENT IN INTERNATIONAL PRODUCT PRICES	(42.298)	(36.946)	(16.513)	(15.764)	(23.034)
- MOVEMENT IN EXCHANGE RATE	29.982	29.360	30.883	31.079	31.237
AVERAGE UNIT OVER/(UNDER) RECOVERY 28/06/2019 - 25/07/2019	(12.316)	(7.586)	14.370	15.315	8.203

### R/\$ EXCHANGE RATE - (R/\$13.9459 - 25/07/2019)

#### EXCHANGE RATE USED IN BASIC FUEL PRICE



#### INTERNATIONAL PRODUCT PRICES OF BASKET USED IN BASIC FUEL PRICE



#### BASIC FUEL PRICE IN SA CENTS PER LITRE

