

	PETROL 95 ULP	PETROL 93 ULP & LRP	DIESEL 0.05%	DIESEL 0.005%	ILL. PAR.
GAUTENG PUMP PRICE (SA c/l) AS FROM 07/08/2019	1 592.000	1 572.000	-	-	-
WHOLESALE PRICE (SA c/l) AS FROM 07/08/2019	-	-	1 433.210	1 437.610	914.678
SINGLE NATIONAL MAXIMUM RETAIL PRICE	-	-	-	-	1 163.000
BASIC FUEL PRICE - 02/08/2019 (SA c/l)	697.058	684.730	744.235	748.448	747.123
PRESS RELEASE CONTRIBUTION TO BFP 02/08/2019 - 02/08/2019 (SA c/l)	677.790	667.790	728.630	734.030	732.128
UNIT OVER/(UNDER) RECOVERY - 02/08/2019 (SA c/l)	(19.268)	(16.940)	(15.605)	(14.418)	(14.995)
AVERAGE BASIC FUEL PRICE 02/08/2019 - 02/08/2019	697.058	684.730	744.235	748.448	747.123
AVERAGE UNIT OVER/(UNDER) RECOVERY 02/08/2019 - 02/08/2019	(19.268)	(16.940)	(15.605)	(14.418)	(14.995)

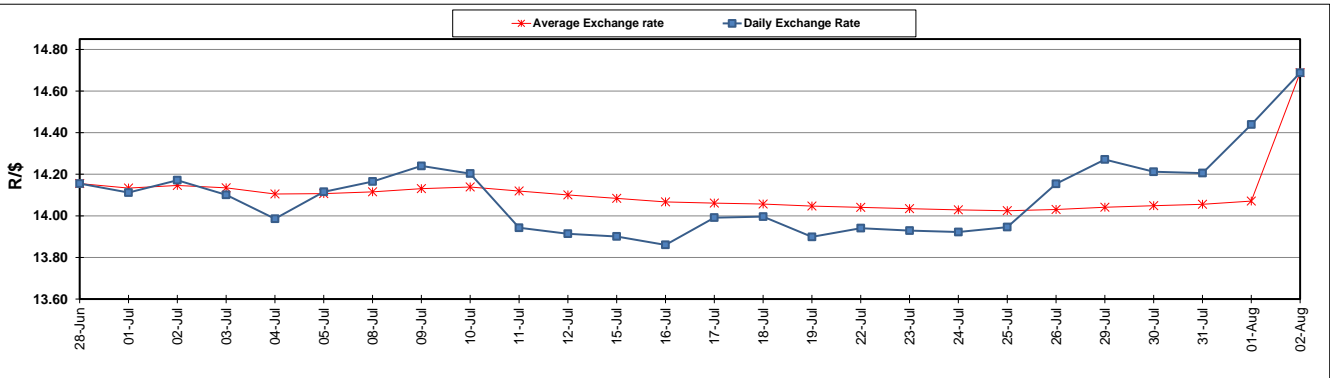
### ANALYSIS MOVEMENT OF AVERAGE OVER/(UNDER) RECOVERY

- MOVEMENT IN INTERNATIONAL PRODUCT PRICES
- MOVEMENT IN EXCHANGE RATE
- AVERAGE UNIT OVER/(UNDER) RECOVERY 02/08/2019 - 02/08/2019

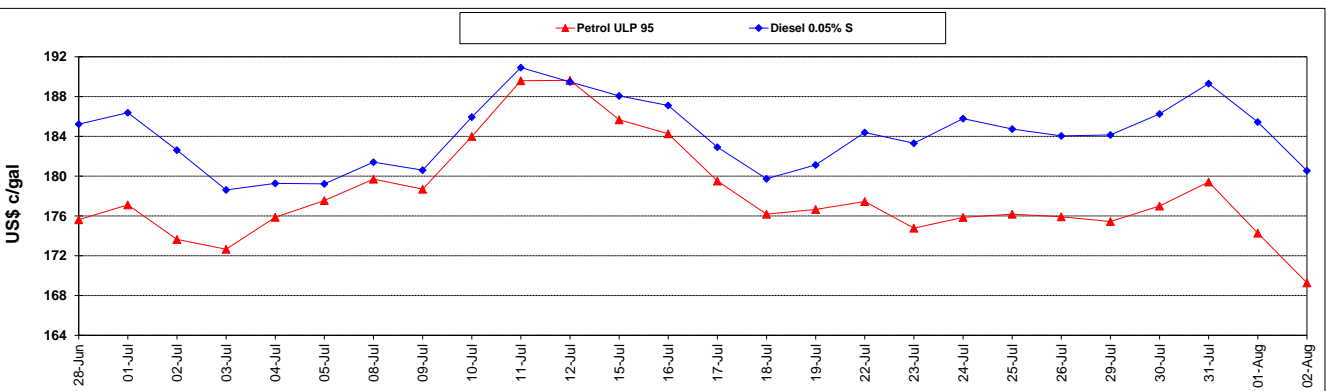
	PETROL 95	PETROL 93	DIESEL 0.05%	DIESEL 0.005%	ILL. PAR.
MOVEMENT IN INTERNATIONAL PRODUCT PRICES	10.018	11.828	15.663	17.027	16.395
MOVEMENT IN EXCHANGE RATE	(29.286)	(28.768)	(31.268)	(31.445)	(31.390)
AVERAGE UNIT OVER/(UNDER) RECOVERY 02/08/2019 - 02/08/2019	(19.268)	(16.940)	(15.605)	(14.418)	(14.995)

### R/\$ EXCHANGE RATE - (R/\$14.6880 - 02/08/2019)

#### EXCHANGE RATE USED IN BASIC FUEL PRICE



#### INTERNATIONAL PRODUCT PRICES OF BASKET USED IN BASIC FUEL PRICE



#### BASIC FUEL PRICE IN SA CENTS PER LITRE

