

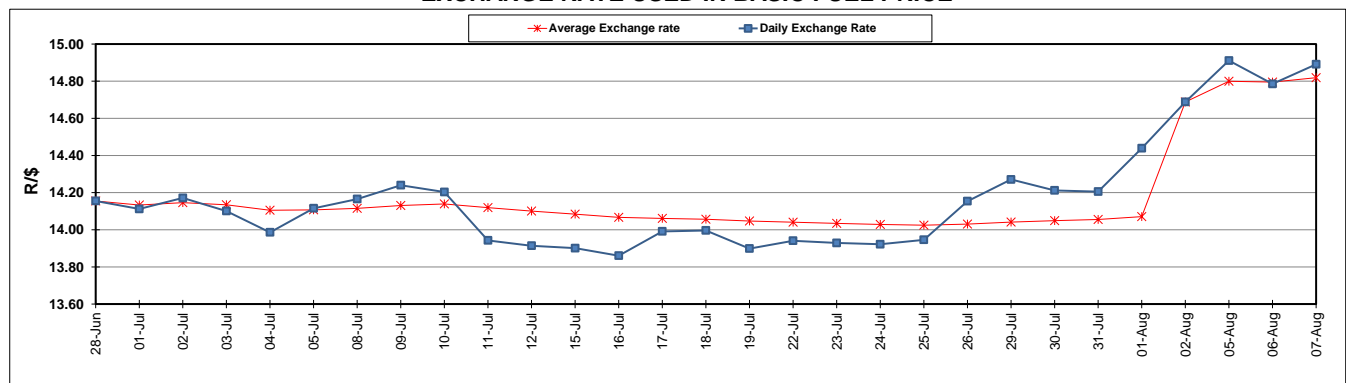
	PETROL 95 ULP	PETROL 93 ULP & LRP	DIESEL 0.05%	DIESEL 0.005%	ILL. PAR.
GAUTENG PUMP PRICE (SA c/l) AS FROM 07/08/2019	1 592.000	1 572.000	-	-	-
WHOLESALE PRICE (SA c/l) AS FROM 07/08/2019	-	-	1 433.210	1 437.610	914.678
SINGLE NATIONAL MAXIMUM RETAIL PRICE	-	-	-	-	1 163.000
BASIC FUEL PRICE - 07/08/2019 (SA c/l)	679.661	655.177	712.616	716.165	722.085
PRESS RELEASE CONTRIBUTION TO BFP 07/08/2019 - 07/08/2019 (SA c/l)	693.170	683.170	719.630	724.030	730.128
UNIT OVER/(UNDER) RECOVERY - 07/08/2019 (SA c/l)	13.509	27.993	7.014	7.865	8.043
AVERAGE BASIC FUEL PRICE 02/08/2019 - 07/08/2019	691.523	672.818	732.197	736.215	738.413
AVERAGE UNIT OVER/(UNDER) RECOVERY 02/08/2019 - 07/08/2019	(9.888)	(1.183)	(5.817)	(4.685)	(6.785)

ANALYSIS MOVEMENT OF AVERAGE OVER/(UNDER) RECOVERY

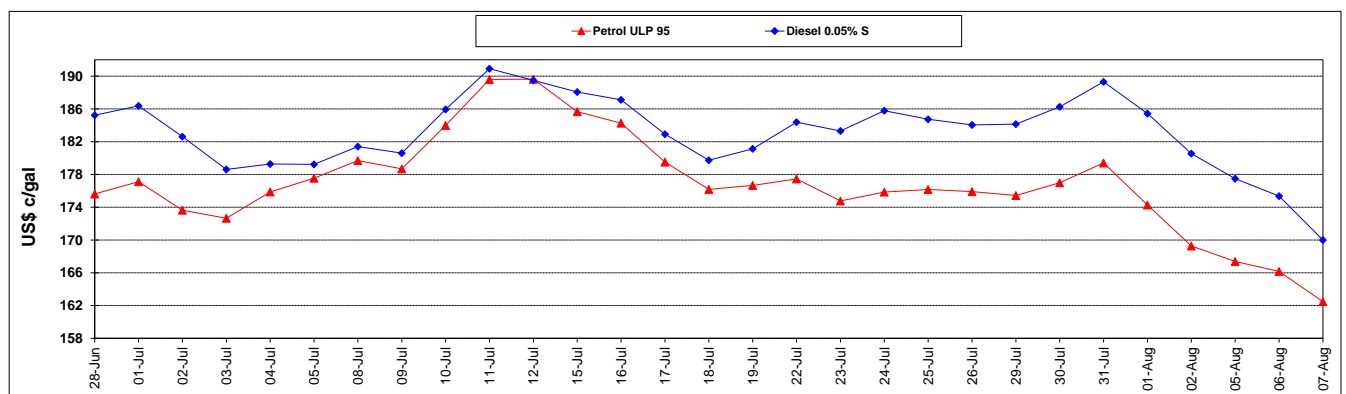
	PETROL 95	PETROL 93	DIESEL 0.05%	DIESEL 0.005%	ILL. PAR.
- MOVEMENT IN INTERNATIONAL PRODUCT PRICES	25.017	32.778	31.141	32.476	30.487
- MOVEMENT IN EXCHANGE RATE	(34.905)	(33.961)	(36.958)	(37.161)	(37.272)
AVERAGE UNIT OVER/(UNDER) RECOVERY 02/08/2019 - 07/08/2019	(9.888)	(1.183)	(5.817)	(4.685)	(6.785)

R/\$ EXCHANGE RATE - (R/\$14.8910 - 07/08/2019)

EXCHANGE RATE USED IN BASIC FUEL PRICE



INTERNATIONAL PRODUCT PRICES OF BASKET USED IN BASIC FUEL PRICE



BASIC FUEL PRICE IN SA CENTS PER LITRE

