

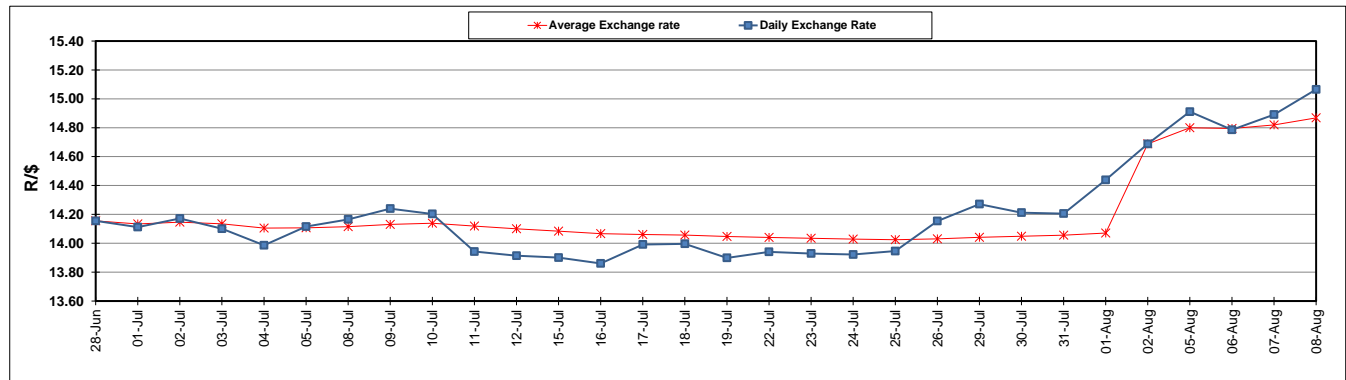
	PETROL 95 ULP	PETROL 93 ULP & LRP	DIESEL 0.05%	DIESEL 0.005%	ILL. PAR.
GAUTENG PUMP PRICE (SA c/l) AS FROM 08/08/2019	1 592.000	1 572.000	-	-	-
WHOLESALE PRICE (SA c/l) AS FROM 08/08/2019	-	-	1 433.210	1 437.610	914.678
SINGLE NATIONAL MAXIMUM RETAIL PRICE	-	-	-	-	1 163.000
BASIC FUEL PRICE - 08/08/2019 (SA c/l)	686.631	661.860	720.154	723.972	726.235
PRESS RELEASE CONTRIBUTION TO BFP 07/08/2019 - 08/08/2019 (SA c/l)	693.170	683.170	719.630	724.030	730.128
UNIT OVER/(UNDER) RECOVERY - 08/08/2019 (SA c/l)	6.539	21.310	(0.524)	0.058	3.893
AVERAGE BASIC FUEL PRICE 02/08/2019 - 08/08/2019	690.545	670.627	729.788	733.766	735.977
AVERAGE UNIT OVER/(UNDER) RECOVERY 02/08/2019 - 08/08/2019	(6.603)	3.315	(4.758)	(3.736)	(4.649)

ANALYSIS MOVEMENT OF AVERAGE OVER/(UNDER) RECOVERY

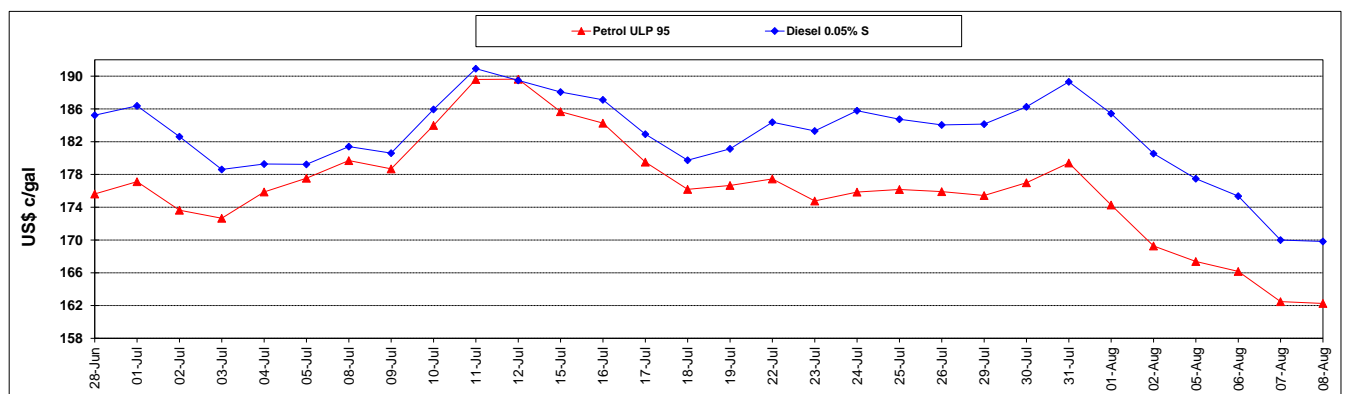
	PETROL 95	PETROL 93	DIESEL 0.05%	DIESEL 0.005%	ILL. PAR.
- MOVEMENT IN INTERNATIONAL PRODUCT PRICES	30.423	39.273	34.372	35.607	34.813
- MOVEMENT IN EXCHANGE RATE	(37.026)	(35.958)	(39.130)	(39.343)	(39.462)
AVERAGE UNIT OVER/(UNDER) RECOVERY 02/08/2019 - 08/08/2019	(6.603)	3.315	(4.758)	(3.736)	(4.649)

R/\$ EXCHANGE RATE - (R/\$15.0650 - 08/08/2019)

EXCHANGE RATE USED IN BASIC FUEL PRICE



INTERNATIONAL PRODUCT PRICES OF BASKET USED IN BASIC FUEL PRICE



BASIC FUEL PRICE IN SA CENTS PER LITRE

