

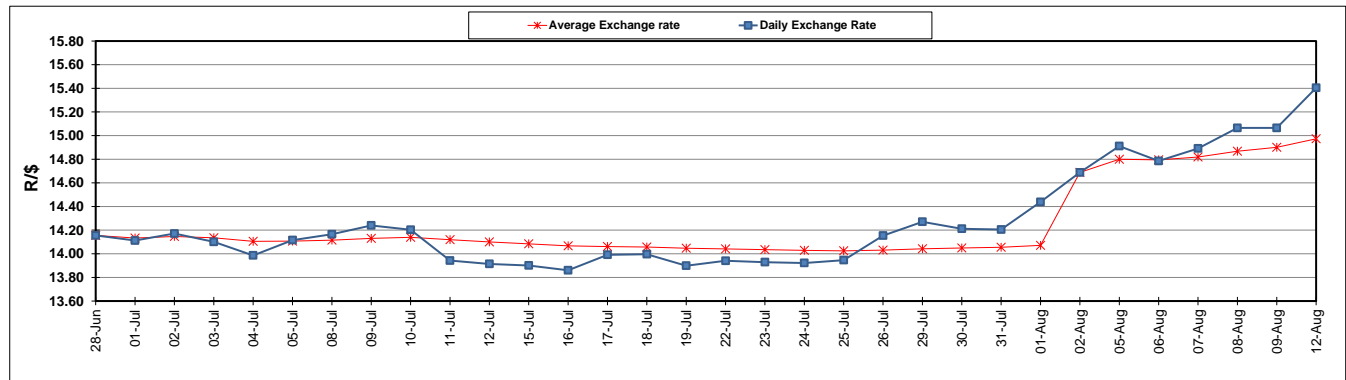
	PETROL 95 ULP	PETROL 93 ULP & LRP	DIESEL 0.05%	DIESEL 0.005%	ILL. PAR.
GAUTENG PUMP PRICE (SA c/l) AS FROM 08/08/2019	1 592.000	1 572.000	-	-	-
WHOLESALE PRICE (SA c/l) AS FROM 08/08/2019	-	-	1 433.210	1 437.610	914.678
SINGLE NATIONAL MAXIMUM RETAIL PRICE	-	-	-	-	1 163.000
BASIC FUEL PRICE - 12/08/2019 (SA c/l)	708.575	683.262	756.063	749.045	748.106
PRESS RELEASE CONTRIBUTION TO BFP 07/08/2019 - 12/08/2019 (SA c/l)	693.170	683.170	719.630	724.030	730.128
UNIT OVER/(UNDER) RECOVERY - 12/08/2019 (SA c/l)	(15.405)	(0.092)	(36.433)	(25.015)	(17.978)
AVERAGE BASIC FUEL PRICE 02/08/2019 - 12/08/2019	693.374	671.994	733.339	735.671	737.118
AVERAGE UNIT OVER/(UNDER) RECOVERY 02/08/2019 - 12/08/2019	(6.796)	4.584	(9.852)	(7.355)	(6.133)

### ANALYSIS MOVEMENT OF AVERAGE OVER/(UNDER) RECOVERY

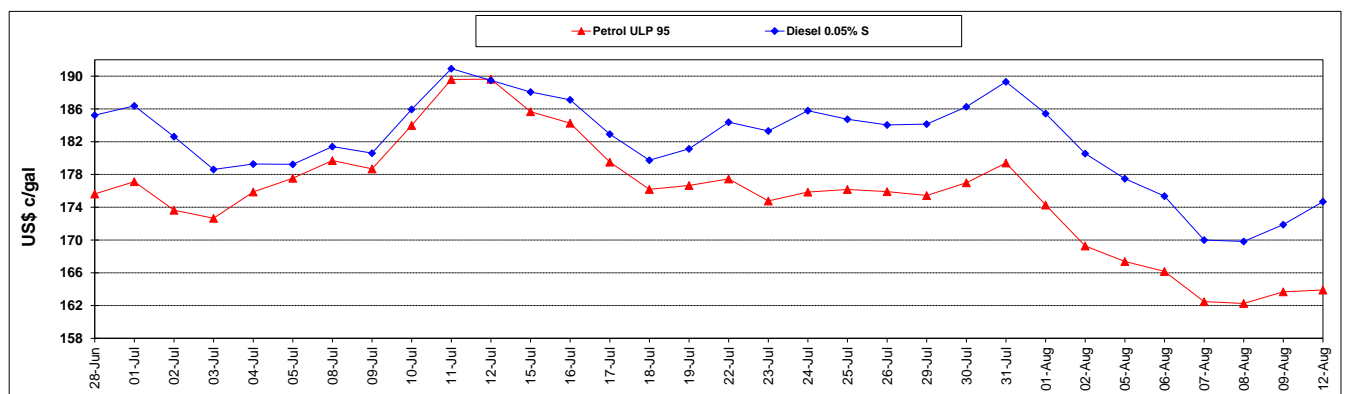
	PETROL 95	PETROL 93	DIESEL 0.05%	DIESEL 0.005%	ILL. PAR.
- MOVEMENT IN INTERNATIONAL PRODUCT PRICES	34.971	45.063	34.321	36.959	38.268
- MOVEMENT IN EXCHANGE RATE	(41.766)	(40.478)	(44.173)	(44.314)	(44.401)
AVERAGE UNIT OVER/(UNDER) RECOVERY 02/08/2019 - 12/08/2019	(6.796)	4.584	(9.852)	(7.355)	(6.133)

### R/\$ EXCHANGE RATE - (R/\$15.4041 - 12/08/2019)

#### EXCHANGE RATE USED IN BASIC FUEL PRICE



#### INTERNATIONAL PRODUCT PRICES OF BASKET USED IN BASIC FUEL PRICE



#### BASIC FUEL PRICE IN SA CENTS PER LITRE

