

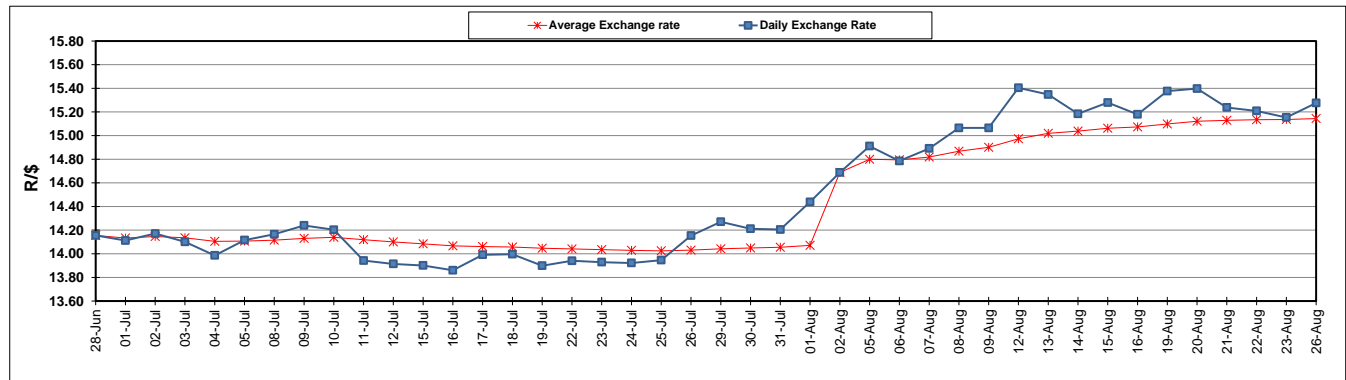
	PETROL 95 ULP	PETROL 93 ULP & LRP	DIESEL 0.05%	DIESEL 0.005%	ILL. PAR.
GAUTENG PUMP PRICE (SA c/l) AS FROM 08/08/2019	1 592.000	1 572.000	-	-	-
WHOLESALE PRICE (SA c/l) AS FROM 08/08/2019	-	-	1 433.210	1 437.610	914.678
SINGLE NATIONAL MAXIMUM RETAIL PRICE	-	-	-	-	1 163.000
BASIC FUEL PRICE - 26/08/2019 (SA c/l)	699.626	676.837	745.437	749.696	754.766
PRESS RELEASE CONTRIBUTION TO BFP 07/08/2019 - 26/08/2019 (SA c/l)	693.170	683.170	719.630	724.030	730.128
UNIT OVER/(UNDER) RECOVERY - 26/08/2019 (SA c/l)	(6.456)	6.333	(25.807)	(25.666)	(24.638)
AVERAGE BASIC FUEL PRICE 02/08/2019 - 26/08/2019	700.203	677.432	745.850	749.709	751.650
AVERAGE UNIT OVER/(UNDER) RECOVERY 02/08/2019 - 26/08/2019	(9.747)	3.024	(24.632)	(23.914)	(21.169)

### ANALYSIS MOVEMENT OF AVERAGE OVER/(UNDER) RECOVERY

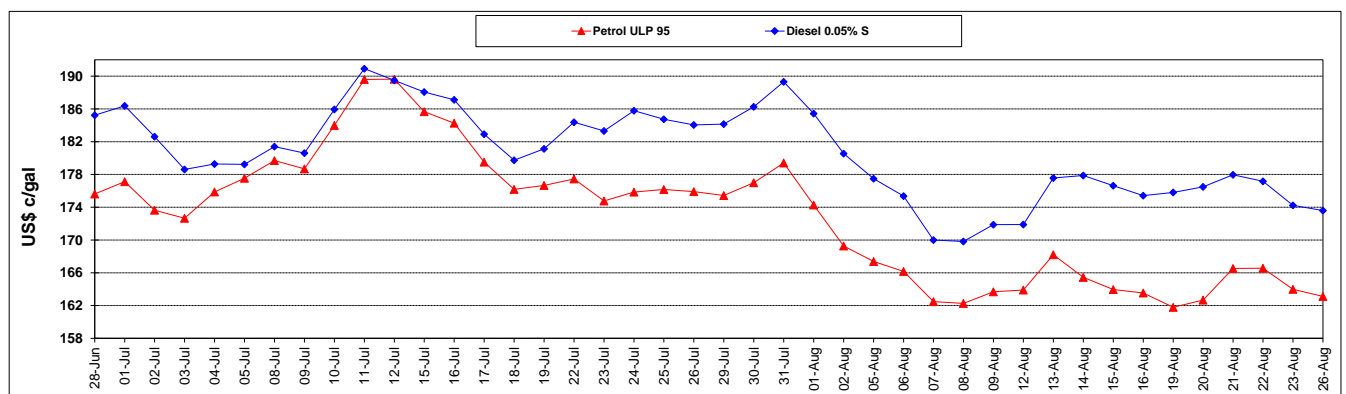
	PETROL 95	PETROL 93	DIESEL 0.05%	DIESEL 0.005%	ILL. PAR.
- MOVEMENT IN INTERNATIONAL PRODUCT PRICES	39.878	51.035	28.228	29.219	32.102
- MOVEMENT IN EXCHANGE RATE	(49.625)	(48.011)	(52.860)	(53.133)	(53.271)
AVERAGE UNIT OVER/(UNDER) RECOVERY 02/08/2019 - 26/08/2019	(9.747)	3.024	(24.632)	(23.914)	(21.169)

### R/\$ EXCHANGE RATE - (R/\$15.2760 - 26/08/2019)

### EXCHANGE RATE USED IN BASIC FUEL PRICE



### INTERNATIONAL PRODUCT PRICES OF BASKET USED IN BASIC FUEL PRICE



### BASIC FUEL PRICE IN SA CENTS PER LITRE

