

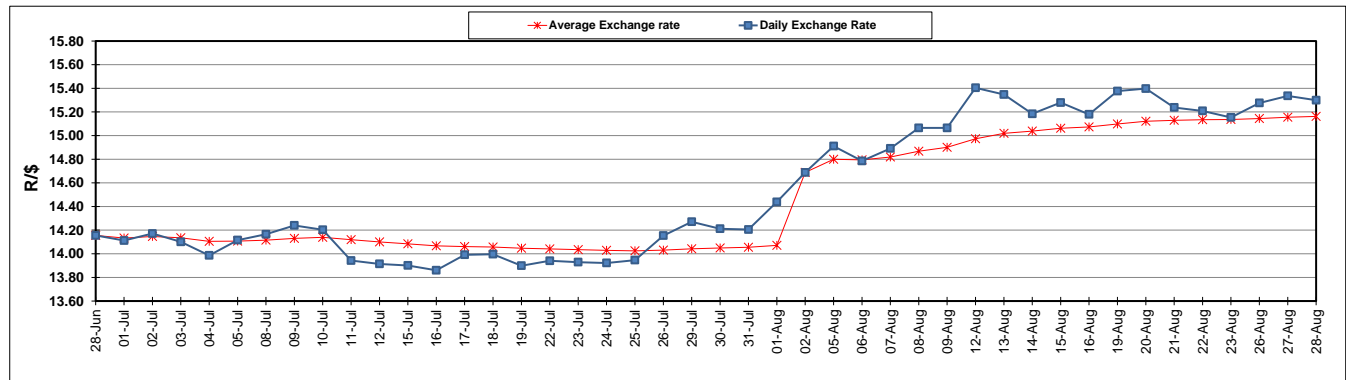
	PETROL 95 ULP	PETROL 93 ULP & LRP	DIESEL 0.05%	DIESEL 0.005%	ILL. PAR.
GAUTENG PUMP PRICE (SA c/l) AS FROM 08/08/2019	1 592.000	1 572.000	-	-	-
WHOLESALE PRICE (SA c/l) AS FROM 08/08/2019	-	-	1 433.210	1 437.610	914.678
SINGLE NATIONAL MAXIMUM RETAIL PRICE	-	-	-	-	1 163.000
BASIC FUEL PRICE - 28/08/2019 (SA c/l)	716.438	692.780	759.863	763.541	764.880
PRESS RELEASE CONTRIBUTION TO BFP 07/08/2019 - 28/08/2019 (SA c/l)	693.170	683.170	719.630	724.030	730.128
UNIT OVER/(UNDER) RECOVERY - 28/08/2019 (SA c/l)	(23.268)	(9.610)	(40.233)	(39.511)	(34.752)
AVERAGE BASIC FUEL PRICE 02/08/2019 - 28/08/2019	701.138	678.283	746.520	750.403	752.446
AVERAGE UNIT OVER/(UNDER) RECOVERY 02/08/2019 - 28/08/2019	(10.396)	2.458	(25.469)	(24.794)	(22.002)

### ANALYSIS MOVEMENT OF AVERAGE OVER/(UNDER) RECOVERY

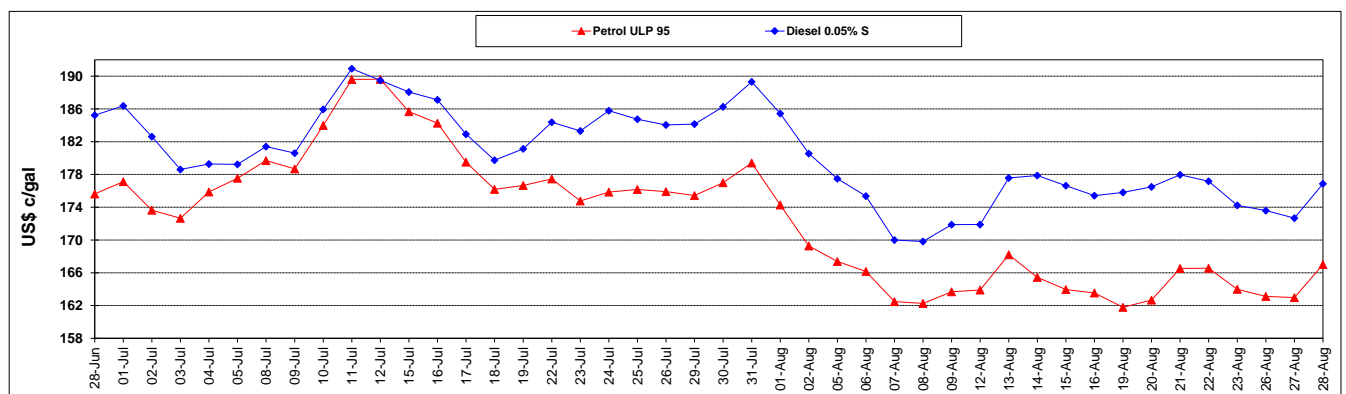
	PETROL 95	PETROL 93	DIESEL 0.05%	DIESEL 0.005%	ILL. PAR.
- MOVEMENT IN INTERNATIONAL PRODUCT PRICES	40.081	51.291	28.276	29.230	32.169
- MOVEMENT IN EXCHANGE RATE	(50.477)	(48.832)	(53.745)	(54.024)	(54.171)
AVERAGE UNIT OVER/(UNDER) RECOVERY 02/08/2019 - 28/08/2019	(10.396)	2.458	(25.469)	(24.794)	(22.002)

### R/\$ EXCHANGE RATE - (R/\$15.2996 - 28/08/2019)

### EXCHANGE RATE USED IN BASIC FUEL PRICE



### INTERNATIONAL PRODUCT PRICES OF BASKET USED IN BASIC FUEL PRICE



### BASIC FUEL PRICE IN SA CENTS PER LITRE

