

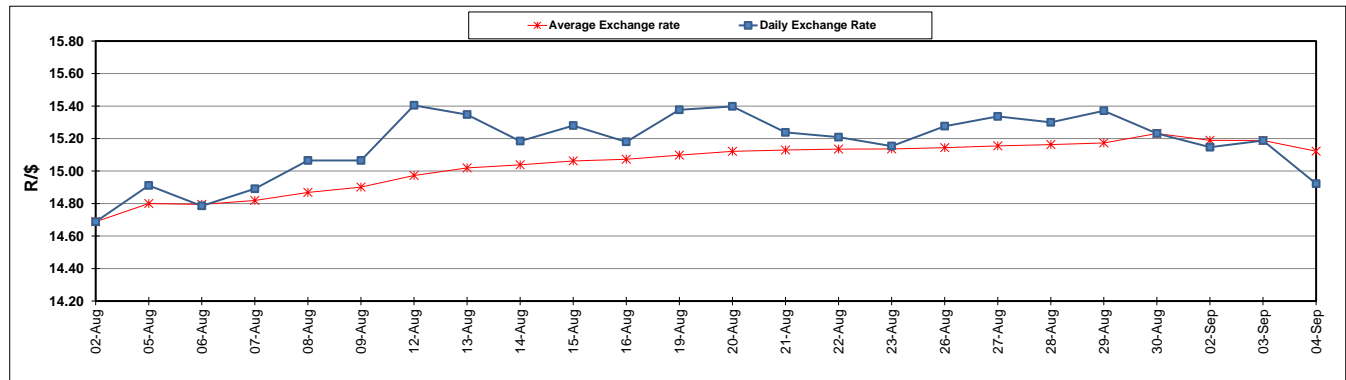
	PETROL 95 ULP	PETROL 93 ULP & LRP	DIESEL 0.05%	DIESEL 0.005%	ILL. PAR.
GAUTENG PUMP PRICE (SA c/l) AS FROM 04/09/2019	1 603.000	1 583.000	-	-	-
WHOLESALE PRICE (SA c/l) AS FROM 04/09/2019	-	-	1 459.210	1 463.610	936.678
SINGLE NATIONAL MAXIMUM RETAIL PRICE	-	-	-	-	1 195.000
BASIC FUEL PRICE - 04/09/2019 (SA c/l)	670.333	649.702	740.346	743.466	742.326
PRESS RELEASE CONTRIBUTION TO BFP 03/09/2019 - 04/09/2019 (SA c/l)	704.170	694.170	745.630	750.030	754.128
UNIT OVER/(UNDER) RECOVERY - 04/09/2019 (SA c/l)	33.837	44.468	5.284	6.564	11.802
AVERAGE BASIC FUEL PRICE 30/08/2019 - 04/09/2019	683.506	661.405	743.410	746.680	745.727
AVERAGE UNIT OVER/(UNDER) RECOVERY 30/08/2019 - 04/09/2019	12.414	24.515	(17.280)	(16.150)	(9.599)

ANALYSIS MOVEMENT OF AVERAGE OVER/(UNDER) RECOVERY

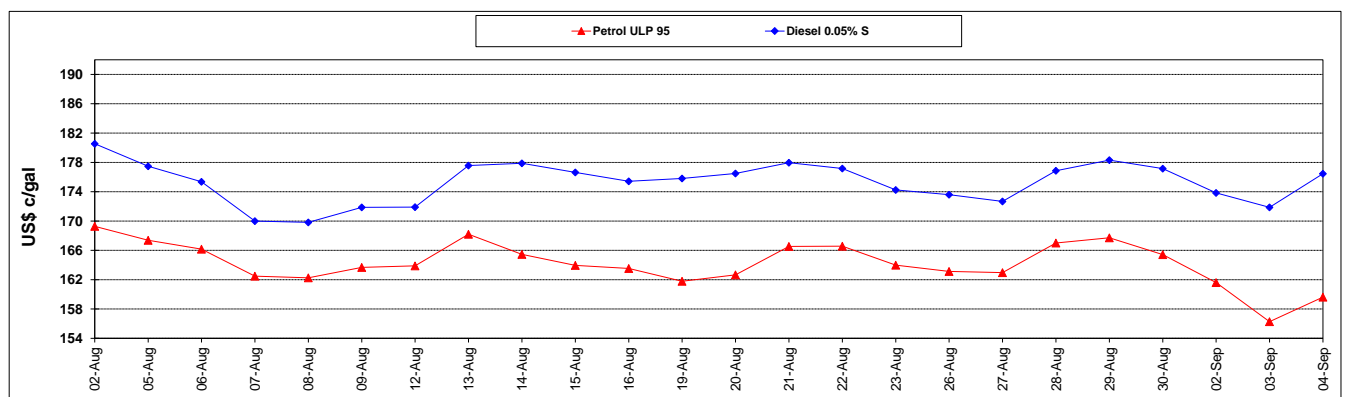
	PETROL 95	PETROL 93	DIESEL 0.05%	DIESEL 0.005%	ILL. PAR.
- MOVEMENT IN INTERNATIONAL PRODUCT PRICES	10.104	22.280	(19.792)	(18.673)	(12.119)
- MOVEMENT IN EXCHANGE RATE	2.310	2.235	2.512	2.523	2.520
AVERAGE UNIT OVER/(UNDER) RECOVERY 30/08/2019 - 04/09/2019	12.414	24.515	(17.280)	(16.150)	(9.599)

R/\$ EXCHANGE RATE - (R/\$14.9221 - 04/09/2019)

EXCHANGE RATE USED IN BASIC FUEL PRICE



INTERNATIONAL PRODUCT PRICES OF BASKET USED IN BASIC FUEL PRICE



BASIC FUEL PRICE IN SA CENTS PER LITRE

