

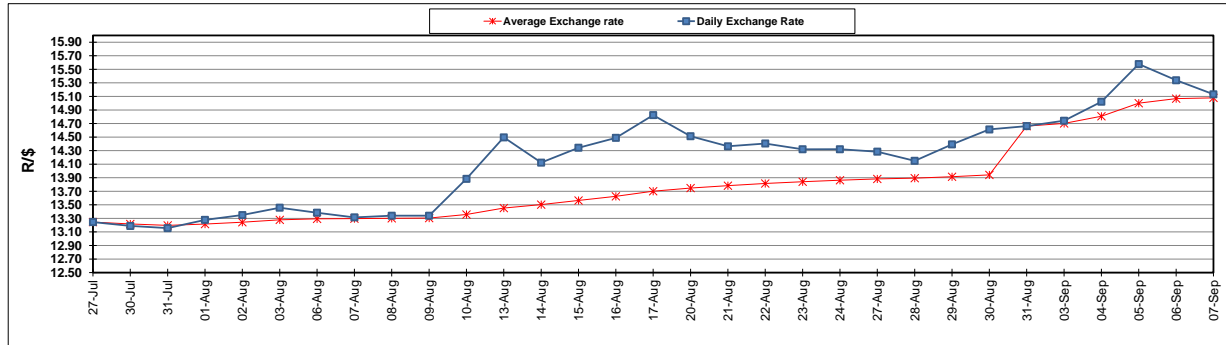
	PETROL 95 ULP	PETROL 93 ULP & LRP	DIESEL 0.05%	DIESEL 0.005%	ILL. PAR.
GAUTENG PUMP PRICE (SA c/l) AS FROM 05/09/2018	1 608.000	1 586.000	-	-	-
WHOLESALE PRICE (SA c/l) AS FROM 05/09/2018	-	-	1 440.830	1 445.230	953.088
SINGLE NATIONAL MAXIMUM RETAIL PRICE	-	-	-	-	1 233.000
BASIC FUEL PRICE - 07/09/2018 (SA c/l)	853.244	841.842	893.538	898.154	888.532
PRESS RELEASE CONTRIBUTION TO BFP 05/09/2018 - 07/09/2018 (SA c/l)	751.170	739.170	767.630	772.030	780.128
UNIT OVER/(UNDER) RECOVERY - 07/09/2018 (SA c/l)	(102.074)	(102.672)	(125.908)	(126.124)	(108.404)
AVERAGE BASIC FUEL PRICE 31/08/2018 - 07/09/2018	863.777	850.821	904.840	909.620	896.014
AVERAGE UNIT OVER/(UNDER) RECOVERY 31/08/2018 - 07/09/2018	(112.657)	(111.701)	(137.210)	(137.590)	(115.886)

### ANALYSIS MOVEMENT OF AVERAGE OVER/(UNDER) RECOVERY

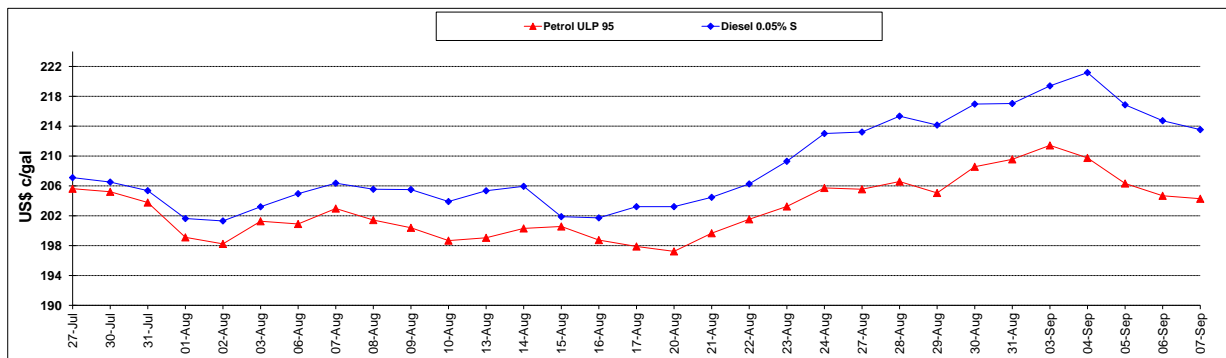
	PETROL 95	PETROL 93	DIESEL 0.05%	DIESEL 0.005%	ILL. PAR.
- MOVEMENT IN INTERNATIONAL PRODUCT PRICES	(47.588)	(47.608)	(69.048)	(69.068)	(48.389)
- MOVEMENT IN EXCHANGE RATE	(65.069)	(64.093)	(68.162)	(68.522)	(67.497)
AVERAGE UNIT OVER/(UNDER) RECOVERY 31/08/2018 - 07/09/2018	(112.657)	(111.701)	(137.210)	(137.590)	(115.886)

### R/\$ EXCHANGE RATE - (R/\$15.1320 - 07/09/2018)

#### EXCHANGE RATE USED IN BASIC FUEL PRICE



#### INTERNATIONAL PRODUCT PRICES OF BASKET USED IN BASIC FUEL PRICE



#### BASIC FUEL PRICE IN SA CENTS PER LITRE

