

	PETROL 95 ULP	PETROL 93 ULP & LRP	DIESEL 0.05%	DIESEL 0.005%	ILL. PAR.
GAUTENG PUMP PRICE (SA c/l) AS FROM 04/09/2019	1,603.000	1,583.000	-	-	-
WHOLESALE PRICE (SA c/l) AS FROM 04/09/2019	-	-	1,459.210	1,463.610	936.678
SINGLE NATIONAL MAXIMUM RETAIL PRICE	-	-	-	-	1,195.000
BASIC FUEL PRICE - 11/09/2019 (SA c/l)	710.068	681.237	761.510	764.777	765.065
PRESS RELEASE CONTRIBUTION TO BFP 04/09/2019 - 11/09/2019 (SA c/l)	704.170	694.170	745.630	750.030	754.128
UNIT OVER/(UNDER) RECOVERY - 11/09/2019 (SA c/l)	(5.898)	12.933	(15.880)	(14.747)	(10.937)
AVERAGE BASIC FUEL PRICE 30/08/2019 - 11/09/2019	689.641	666.637	750.639	753.847	753.575
AVERAGE UNIT OVER/(UNDER) RECOVERY 30/08/2019 - 11/09/2019	10.862	23.866	(13.675)	(12.483)	(7.447)

ANALYSIS MOVEMENT OF AVERAGE OVER/(UNDER) RECOVERY

- MOVEMENT IN INTERNATIONAL PRODUCT PRICES

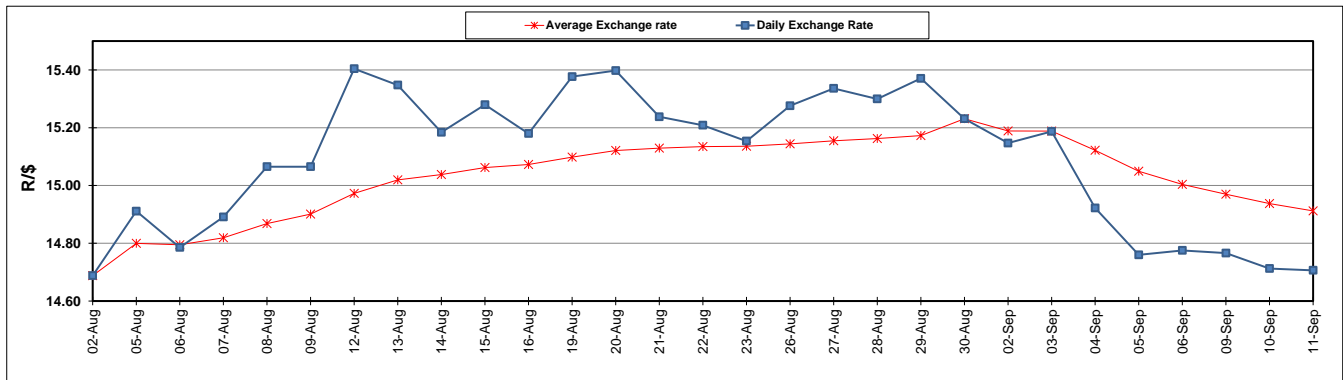
- MOVEMENT IN EXCHANGE RATE

AVERAGE UNIT OVER/(UNDER) RECOVERY 30/08/2019 - 11/09/2019

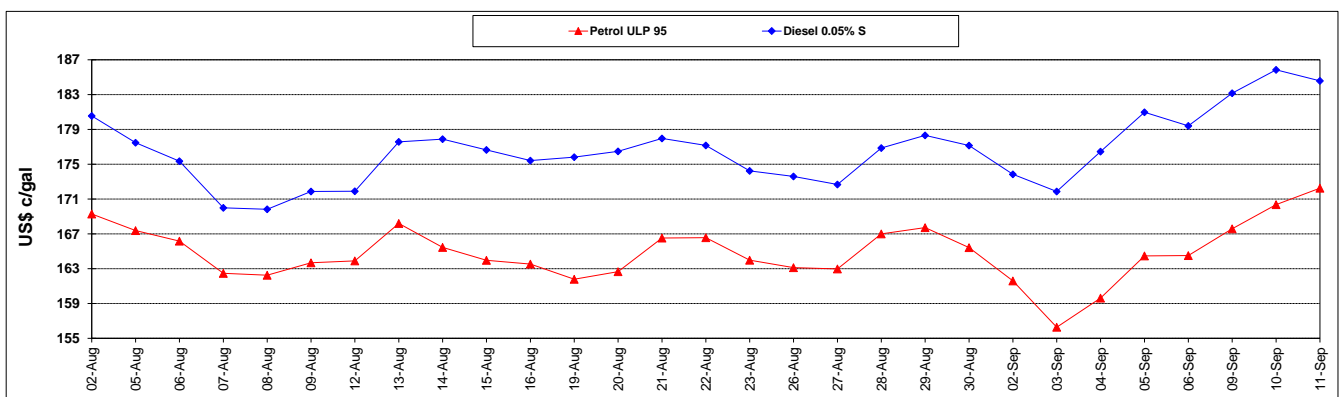
	PETROL 95	PETROL 93	DIESEL 0.05%	DIESEL 0.005%	ILL. PAR.
- MOVEMENT IN INTERNATIONAL PRODUCT PRICES	(1.209)	12.198	(26.814)	(25.678)	(20.637)
- MOVEMENT IN EXCHANGE RATE	12.071	11.668	13.138	13.194	13.190
AVERAGE UNIT OVER/(UNDER) RECOVERY 30/08/2019 - 11/09/2019	10.862	23.866	(13.675)	(12.483)	(7.447)

R/\$ EXCHANGE RATE - (R/\$14.7063 - 11/09/2019)

EXCHANGE RATE USED IN BASIC FUEL PRICE



INTERNATIONAL PRODUCT PRICES OF BASKET USED IN BASIC FUEL PRICE



BASIC FUEL PRICE IN SA CENTS PER LITRE

