

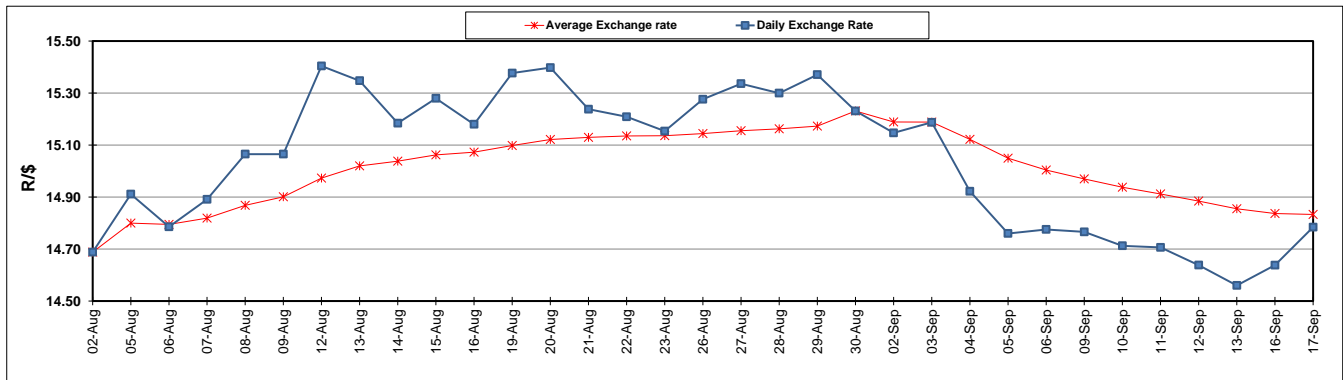
	PETROL 95 ULP	PETROL 93 ULP & LRP	DIESEL 0.05%	DIESEL 0.005%	ILL. PAR.
GAUTENG PUMP PRICE (SA c/l) AS FROM 04/09/2019	1,603.000	1,583.000	-	-	-
WHOLESALE PRICE (SA c/l) AS FROM 04/09/2019	-	-	1,459.210	1,463.610	936.678
SINGLE NATIONAL MAXIMUM RETAIL PRICE	-	-	-	-	1,195.000
BASIC FUEL PRICE - 17/09/2019 (SA c/l)	789.050	750.166	811.122	815.977	827.645
PRESS RELEASE CONTRIBUTION TO BFP 04/09/2019 - 17/09/2019 (SA c/l)	704.170	694.170	745.630	750.030	754.128
UNIT OVER/(UNDER) RECOVERY - 17/09/2019 (SA c/l)	(84.880)	(55.996)	(65.492)	(65.947)	(73.517)
AVERAGE BASIC FUEL PRICE 30/08/2019 - 17/09/2019	703.331	677.276	756.600	760.053	761.341
AVERAGE UNIT OVER/(UNDER) RECOVERY 30/08/2019 - 17/09/2019	(1.699)	14.356	(16.970)	(16.023)	(12.752)

### ANALYSIS MOVEMENT OF AVERAGE OVER/(UNDER) RECOVERY

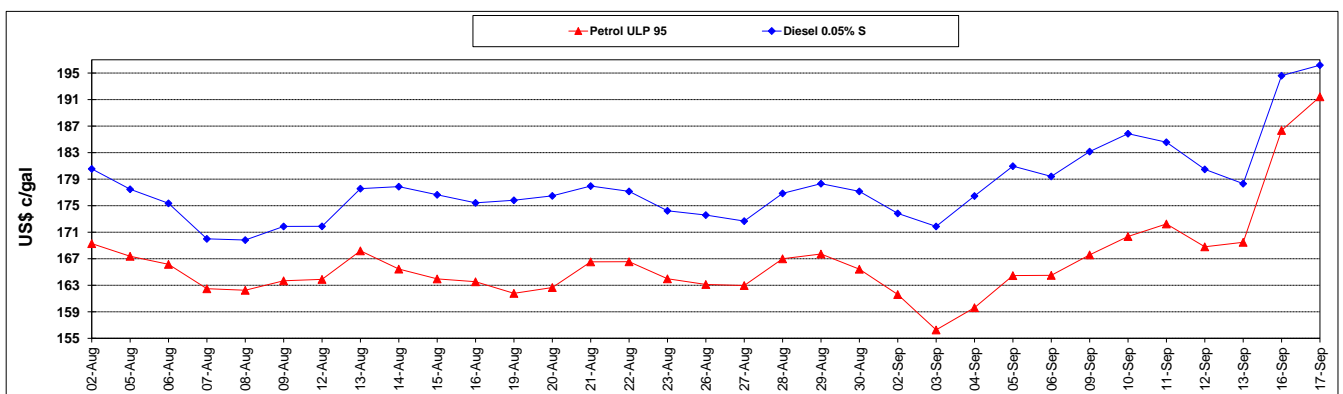
	PETROL 95	PETROL 93	DIESEL 0.05%	DIESEL 0.005%	ILL. PAR.
- MOVEMENT IN INTERNATIONAL PRODUCT PRICES	(17.821)	(1.169)	(34.313)	(33.445)	(30.202)
- MOVEMENT IN EXCHANGE RATE	16.122	15.525	17.343	17.422	17.451
AVERAGE UNIT OVER/(UNDER) RECOVERY 30/08/2019 - 17/09/2019	(1.699)	14.356	(16.970)	(16.023)	(12.752)

**R/\$ EXCHANGE RATE - (R/\$14.7841 - 17/09/2019)**

### EXCHANGE RATE USED IN BASIC FUEL PRICE



### INTERNATIONAL PRODUCT PRICES OF BASKET USED IN BASIC FUEL PRICE



### BASIC FUEL PRICE IN SA CENTS PER LITRE

