

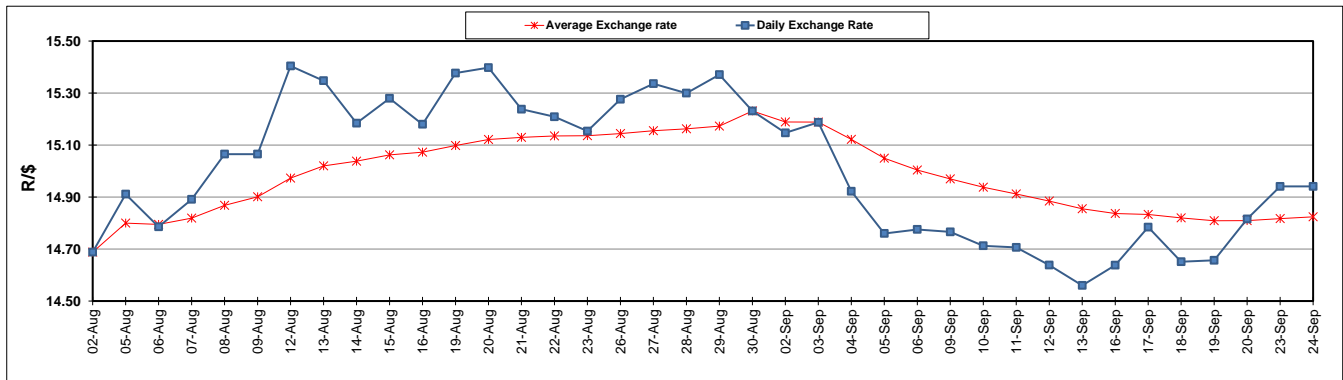
	PETROL 95 ULP	PETROL 93 ULP & LRP	DIESEL 0.05%	DIESEL 0.005%	ILL. PAR.
GAUTENG PUMP PRICE (SA c/l) AS FROM 04/09/2019	1,603.000	1,583.000	-	-	-
WHOLESALE PRICE (SA c/l) AS FROM 04/09/2019	-	-	1,459.210	1,463.610	936.678
SINGLE NATIONAL MAXIMUM RETAIL PRICE	-	-	-	-	1,195.000
BASIC FUEL PRICE - 24/09/2019 (SA c/l)	763.863	708.768	790.033	795.661	803.410
PRESS RELEASE CONTRIBUTION TO BFP 04/09/2019 - 24/09/2019 (SA c/l)	704.170	694.170	745.630	750.030	754.128
UNIT OVER/(UNDER) RECOVERY - 24/09/2019 (SA c/l)	(59.693)	(14.598)	(44.403)	(45.631)	(49.282)
AVERAGE BASIC FUEL PRICE 30/08/2019 - 24/09/2019	720.102	688.497	765.390	769.421	773.129
AVERAGE UNIT OVER/(UNDER) RECOVERY 30/08/2019 - 24/09/2019	(17.765)	3.840	(24.094)	(23.724)	(23.001)

ANALYSIS MOVEMENT OF AVERAGE OVER/(UNDER) RECOVERY

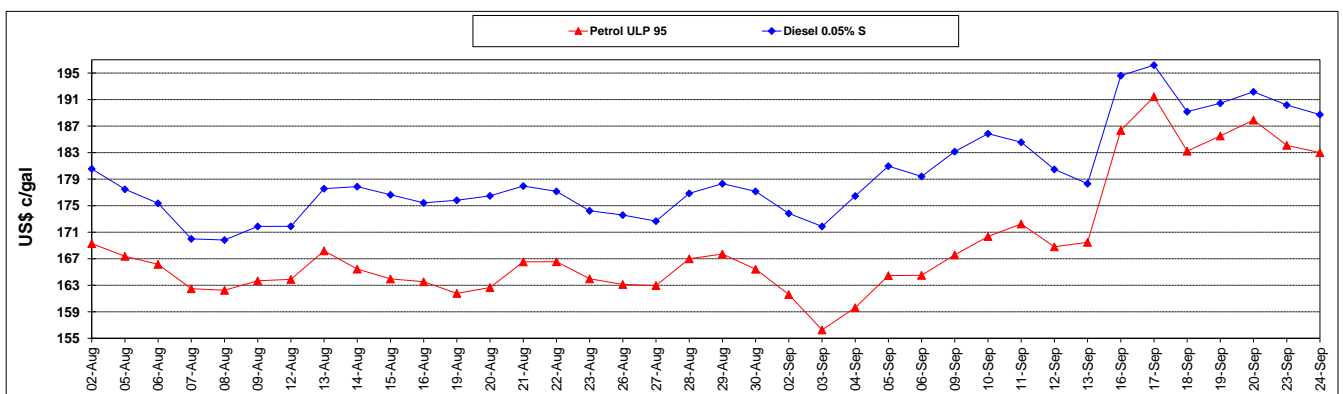
	PETROL 95	PETROL 93	DIESEL 0.05%	DIESEL 0.005%	ILL. PAR.
- MOVEMENT IN INTERNATIONAL PRODUCT PRICES	(34.713)	(12.365)	(42.107)	(41.833)	(41.197)
- MOVEMENT IN EXCHANGE RATE	16.948	16.205	18.014	18.109	18.196
AVERAGE UNIT OVER/(UNDER) RECOVERY 30/08/2019 - 24/09/2019	(17.765)	3.840	(24.094)	(23.724)	(23.001)

R/\$ EXCHANGE RATE - (R/\$14.9408 - 24/09/2019)

EXCHANGE RATE USED IN BASIC FUEL PRICE



INTERNATIONAL PRODUCT PRICES OF BASKET USED IN BASIC FUEL PRICE



BASIC FUEL PRICE IN SA CENTS PER LITRE

