

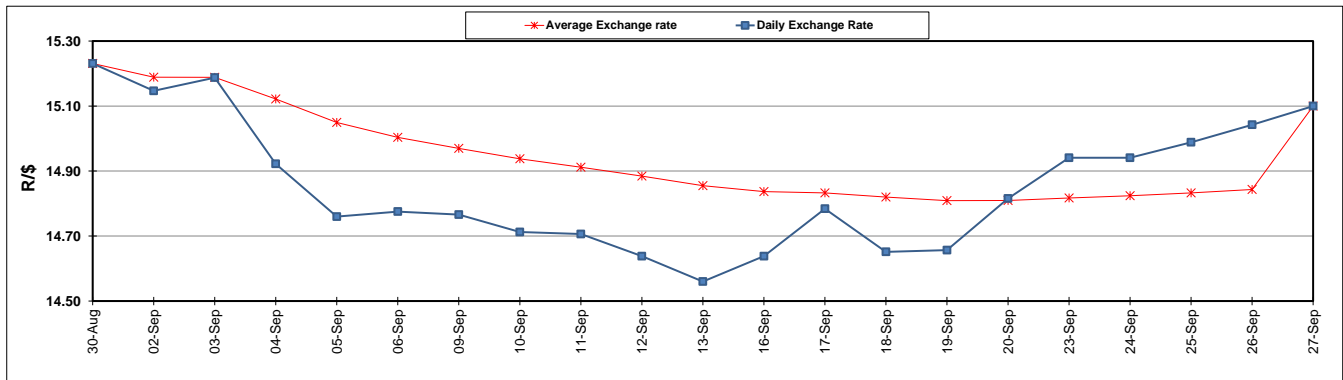
	PETROL 95 ULP	PETROL 93 ULP & LRP	DIESEL 0.05%	DIESEL 0.005%	ILL. PAR.
GAUTENG PUMP PRICE (SA c/l) AS FROM 02/10/2019	1,621.000	1,579.000	-	-	-
WHOLESALE PRICE (SA c/l) AS FROM 02/10/2019	-	-	1,484.210	1,488.610	961.678
SINGLE NATIONAL MAXIMUM RETAIL PRICE	-	-	-	-	1,228.000
BASIC FUEL PRICE - 27/09/2019 (SA c/l)	740.367	709.315	789.997	794.818	805.775
PRESS RELEASE CONTRIBUTION TO BFP 27/09/2019 - 27/09/2019 (SA c/l)	704.170	694.170	745.630	750.030	754.128
UNIT OVER/(UNDER) RECOVERY - 27/09/2019 (SA c/l)	(36.197)	(15.145)	(44.367)	(44.788)	(51.647)
AVERAGE BASIC FUEL PRICE 27/09/2019 - 27/09/2019	740.367	709.315	789.997	794.818	805.775
AVERAGE UNIT OVER/(UNDER) RECOVERY 27/09/2019 - 27/09/2019	(36.197)	(15.145)	(44.367)	(44.788)	(51.647)

ANALYSIS MOVEMENT OF AVERAGE OVER/(UNDER) RECOVERY

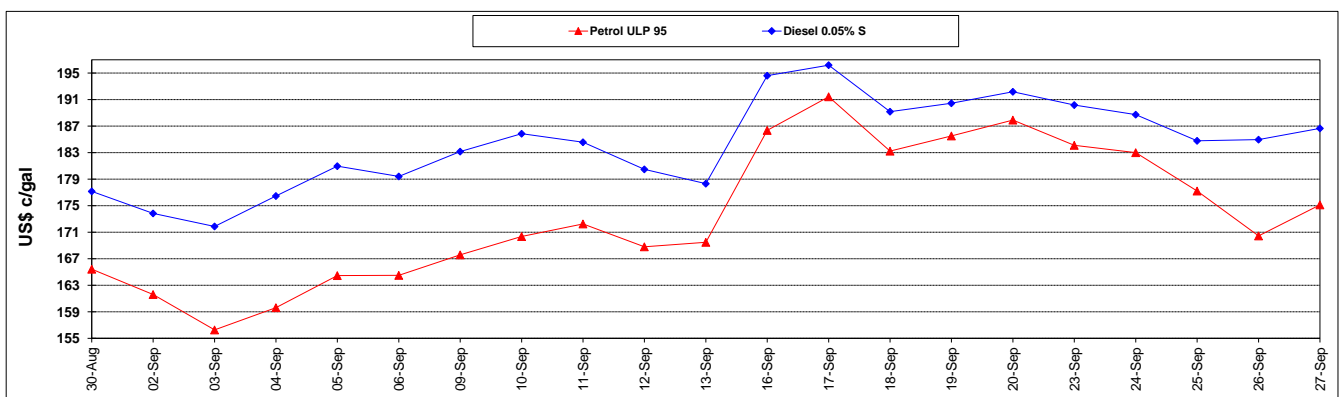
	PETROL 95	PETROL 93	DIESEL 0.05%	DIESEL 0.005%	ILL. PAR.
- MOVEMENT IN INTERNATIONAL PRODUCT PRICES	(23.606)	(3.082)	(30.932)	(31.271)	(37.943)
- MOVEMENT IN EXCHANGE RATE	(12.591)	(12.063)	(13.435)	(13.517)	(13.704)
AVERAGE UNIT OVER/(UNDER) RECOVERY 27/09/2019 - 27/09/2019	(36.197)	(15.145)	(44.367)	(44.788)	(51.647)

R/\$ EXCHANGE RATE - (R/\$15.1000 - 27/09/2019)

EXCHANGE RATE USED IN BASIC FUEL PRICE



INTERNATIONAL PRODUCT PRICES OF BASKET USED IN BASIC FUEL PRICE



BASIC FUEL PRICE IN SA CENTS PER LITRE

