

	PETROL 95 ULP	PETROL 93 ULP & LRP	DIESEL 0.05%	DIESEL 0.005%	ILL. PAR.
GAUTENG PUMP PRICE (SA c/l) AS FROM 02/10/2019	1,621.000	1,579.000	-	-	-
WHOLESALE PRICE (SA c/l) AS FROM 02/10/2019	-	-	1,484.210	1,488.610	961.678
SINGLE NATIONAL MAXIMUM RETAIL PRICE	-	-	-	-	1,228.000
BASIC FUEL PRICE - 07/10/2019 (SA c/l)	739.298	691.692	761.075	767.522	767.053
PRESS RELEASE CONTRIBUTION TO BFP 02/10/2019 - 07/10/2019 (SA c/l)	722.170	690.170	770.630	775.030	779.128
UNIT OVER/(UNDER) RECOVERY - 07/10/2019 (SA c/l)	(17.128)	(1.522)	9.555	7.508	12.075
AVERAGE BASIC FUEL PRICE 27/09/2019 - 07/10/2019	730.010	695.620	769.100	774.633	778.404
AVERAGE UNIT OVER/(UNDER) RECOVERY 27/09/2019 - 07/10/2019	(15.554)	(3.735)	(9.185)	(10.317)	(9.990)

### ANALYSIS MOVEMENT OF AVERAGE OVER/(UNDER) RECOVERY

- MOVEMENT IN INTERNATIONAL PRODUCT PRICES

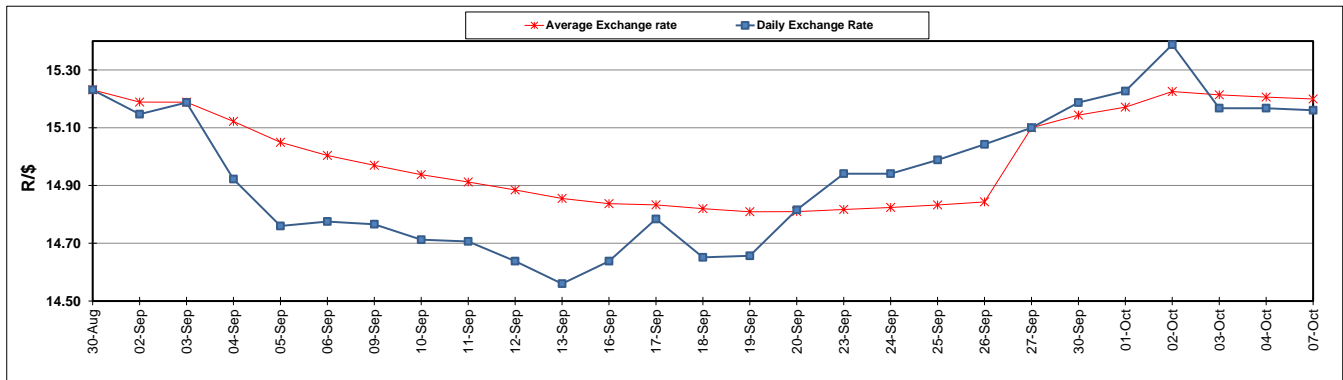
- MOVEMENT IN EXCHANGE RATE

AVERAGE UNIT OVER/(UNDER) RECOVERY 27/09/2019 - 07/10/2019

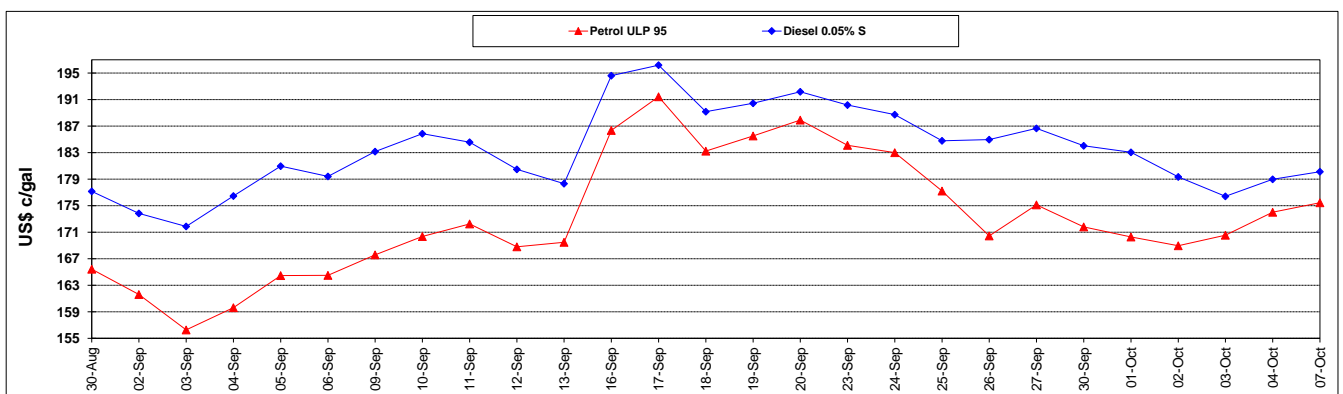
	PETROL 95	PETROL 93	DIESEL 0.05%	DIESEL 0.005%	ILL. PAR.
- MOVEMENT IN INTERNATIONAL PRODUCT PRICES	1.559	12.570	8.845	7.842	8.257
- MOVEMENT IN EXCHANGE RATE	(17.113)	(16.306)	(18.029)	(18.159)	(18.247)
AVERAGE UNIT OVER/(UNDER) RECOVERY 27/09/2019 - 07/10/2019	(15.554)	(3.735)	(9.185)	(10.317)	(9.990)

### R/\$ EXCHANGE RATE - (R/\$15.1604 - 07/10/2019)

#### EXCHANGE RATE USED IN BASIC FUEL PRICE



#### INTERNATIONAL PRODUCT PRICES OF BASKET USED IN BASIC FUEL PRICE



#### BASIC FUEL PRICE IN SA CENTS PER LITRE

