

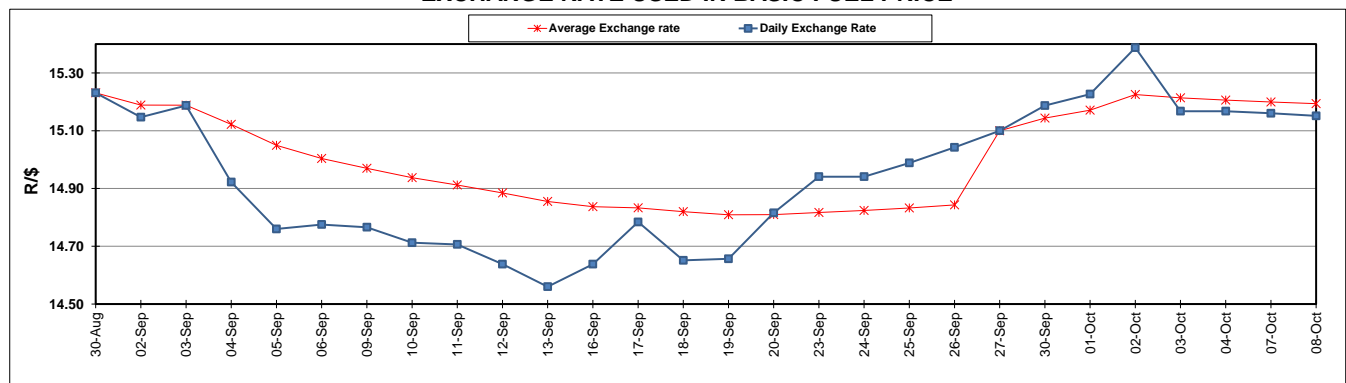
	PETROL 95 ULP	PETROL 93 ULP & LRP	DIESEL 0.05%	DIESEL 0.005%	ILL. PAR.
GAUTENG PUMP PRICE (SA c/l) AS FROM 02/10/2019	1,621.000	1,579.000	-	-	-
WHOLESALE PRICE (SA c/l) AS FROM 02/10/2019	-	-	1,484.210	1,488.610	961.678
SINGLE NATIONAL MAXIMUM RETAIL PRICE	-	-	-	-	1,228.000
BASIC FUEL PRICE - 08/10/2019 (SA c/l)	733.371	682.152	754.814	761.684	757.972
PRESS RELEASE CONTRIBUTION TO BFP 02/10/2019 - 08/10/2019 (SA c/l)	722.170	690.170	770.630	775.030	779.128
UNIT OVER/(UNDER) RECOVERY - 08/10/2019 (SA c/l)	(11.201)	8.018	15.816	13.346	21.156
AVERAGE BASIC FUEL PRICE 27/09/2019 - 08/10/2019	730.430	693.936	767.315	773.014	775.850
AVERAGE UNIT OVER/(UNDER) RECOVERY 27/09/2019 - 08/10/2019	(15.010)	(2.266)	(6.060)	(7.359)	(6.097)

ANALYSIS MOVEMENT OF AVERAGE OVER/(UNDER) RECOVERY

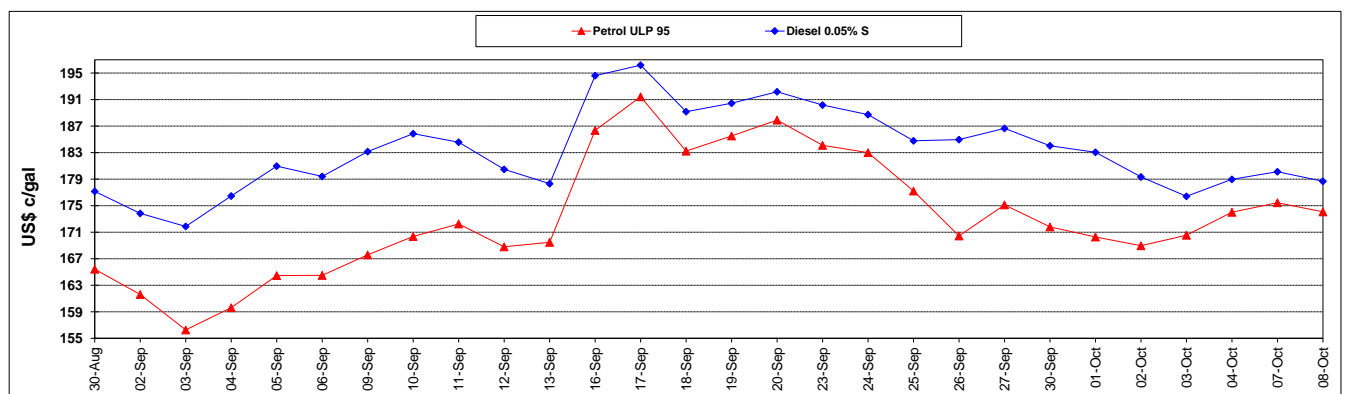
	PETROL 95	PETROL 93	DIESEL 0.05%	DIESEL 0.005%	ILL. PAR.
- MOVEMENT IN INTERNATIONAL PRODUCT PRICES	1.831	13.733	11.631	10.464	11.791
- MOVEMENT IN EXCHANGE RATE	(16.841)	(15.999)	(17.691)	(17.823)	(17.888)
AVERAGE UNIT OVER/(UNDER) RECOVERY 27/09/2019 - 08/10/2019	(15.010)	(2.266)	(6.060)	(7.359)	(6.097)

R/\$ EXCHANGE RATE - (R/\$15.1514 - 08/10/2019)

EXCHANGE RATE USED IN BASIC FUEL PRICE



INTERNATIONAL PRODUCT PRICES OF BASKET USED IN BASIC FUEL PRICE



BASIC FUEL PRICE IN SA CENTS PER LITRE

