

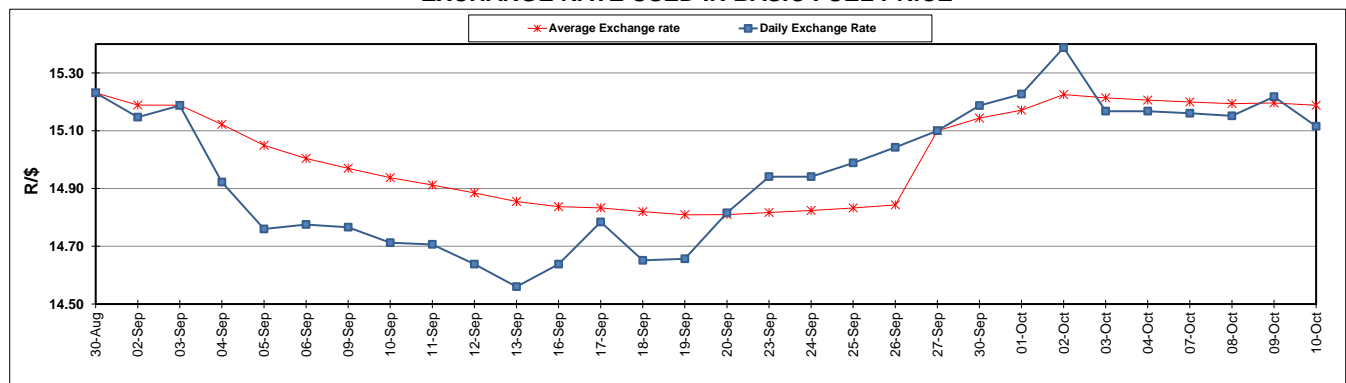
	PETROL 95 ULP	PETROL 93 ULP & LRP	DIESEL 0.05%	DIESEL 0.005%	ILL. PAR.
GAUTENG PUMP PRICE (SA c/l) AS FROM 02/10/2019	1,621.000	1,579.000	-	-	-
WHOLESALE PRICE (SA c/l) AS FROM 02/10/2019	-	-	1,484.210	1,488.610	961.678
SINGLE NATIONAL MAXIMUM RETAIL PRICE	-	-	-	-	1,228.000
BASIC FUEL PRICE - 10/10/2019 (SA c/l)	723.202	671.860	758.837	766.151	757.211
PRESS RELEASE CONTRIBUTION TO BFP 02/10/2019 - 10/10/2019 (SA c/l)	722.170	690.170	770.630	775.030	779.128
UNIT OVER/(UNDER) RECOVERY - 10/10/2019 (SA c/l)	(1.032)	18.310	11.793	8.879	21.917
AVERAGE BASIC FUEL PRICE 27/09/2019 - 10/10/2019	730.866	690.348	766.326	772.362	773.116
AVERAGE UNIT OVER/(UNDER) RECOVERY 27/09/2019 - 10/10/2019	(14.096)	1.022	(3.196)	(4.832)	(1.488)

ANALYSIS MOVEMENT OF AVERAGE OVER/(UNDER) RECOVERY

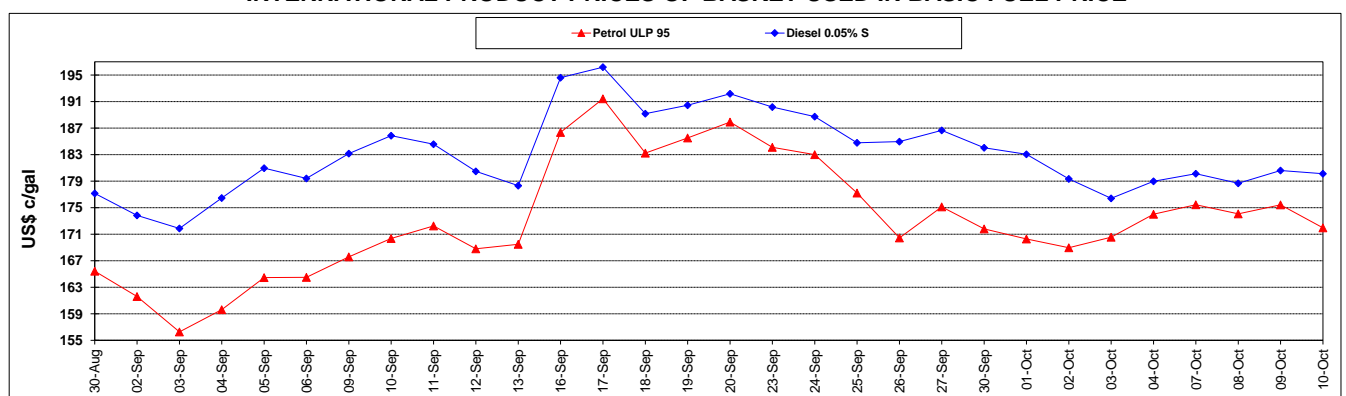
	PETROL 95	PETROL 93	DIESEL 0.05%	DIESEL 0.005%	ILL. PAR.
- MOVEMENT IN INTERNATIONAL PRODUCT PRICES	2.501	16.699	14.206	12.707	16.068
- MOVEMENT IN EXCHANGE RATE	(16.597)	(15.677)	(17.402)	(17.539)	(17.556)
AVERAGE UNIT OVER/(UNDER) RECOVERY 27/09/2019 - 10/10/2019	(14.096)	1.022	(3.196)	(4.832)	(1.488)

R/\$ EXCHANGE RATE - (R/\$15.1153 - 10/10/2019)

EXCHANGE RATE USED IN BASIC FUEL PRICE



INTERNATIONAL PRODUCT PRICES OF BASKET USED IN BASIC FUEL PRICE



BASIC FUEL PRICE IN SA CENTS PER LITRE

