

	PETROL 95 ULP	PETROL 93 ULP & LRP	DIESEL 0.05%	DIESEL 0.005%	ILL. PAR.
GAUTENG PUMP PRICE (SA c/l) AS FROM 02/10/2019	1,621.000	1,579.000	-	-	-
WHOLESALE PRICE (SA c/l) AS FROM 02/10/2019	-	-	1,484.210	1,488.610	961.678
SINGLE NATIONAL MAXIMUM RETAIL PRICE	-	-	-	-	1,228.000
BASIC FUEL PRICE - 11/10/2019 (SA c/l)	724.258	678.356	770.542	777.770	768.133
PRESS RELEASE CONTRIBUTION TO BFP 02/10/2019 - 11/10/2019 (SA c/l)	722.170	690.170	770.630	775.030	779.128
UNIT OVER/(UNDER) RECOVERY - 11/10/2019 (SA c/l)	(2.088)	11.814	0.088	(2.740)	10.995
AVERAGE BASIC FUEL PRICE 27/09/2019 - 11/10/2019	730.266	689.258	766.710	772.853	772.663
AVERAGE UNIT OVER/(UNDER) RECOVERY 27/09/2019 - 11/10/2019	(13.005)	2.003	(2.898)	(4.641)	(0.353)

ANALYSIS MOVEMENT OF AVERAGE OVER/(UNDER) RECOVERY

- MOVEMENT IN INTERNATIONAL PRODUCT PRICES

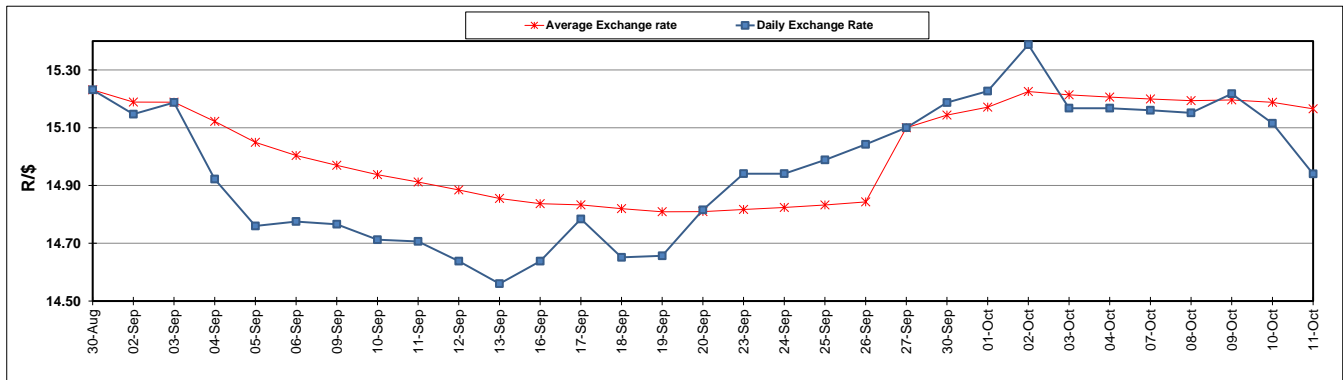
- MOVEMENT IN EXCHANGE RATE

AVERAGE UNIT OVER/(UNDER) RECOVERY 27/09/2019 - 11/10/2019

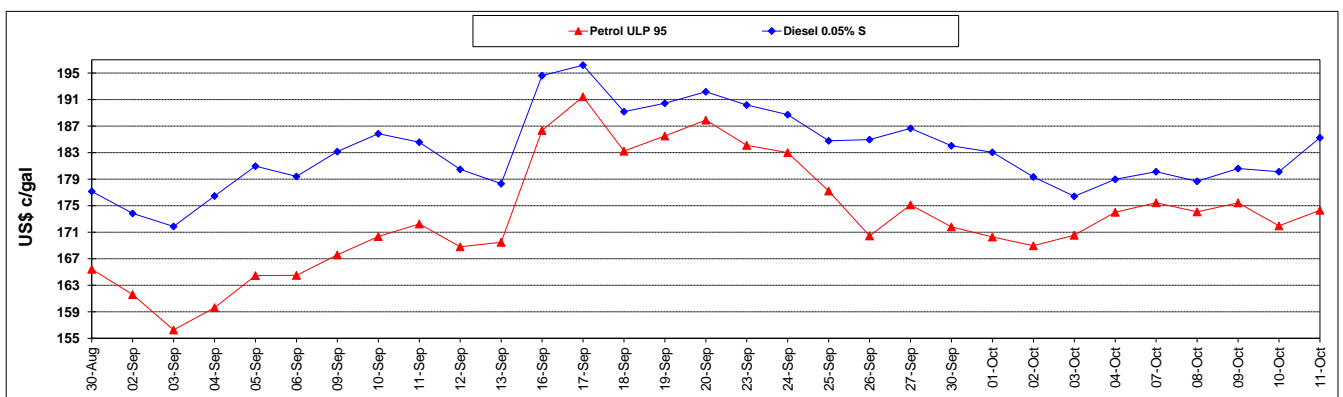
	PETROL 95	PETROL 93	DIESEL 0.05%	DIESEL 0.005%	ILL. PAR.
MOVEMENT IN INTERNATIONAL PRODUCT PRICES	2.515	16.651	13.396	11.784	16.068
MOVEMENT IN EXCHANGE RATE	(15.520)	(14.648)	(16.294)	(16.425)	(16.421)
AVERAGE UNIT OVER/(UNDER) RECOVERY 27/09/2019 - 11/10/2019	(13.005)	2.003	(2.898)	(4.641)	(0.353)

R/\$ EXCHANGE RATE - (R/\$14.9400 - 11/10/2019)

EXCHANGE RATE USED IN BASIC FUEL PRICE



INTERNATIONAL PRODUCT PRICES OF BASKET USED IN BASIC FUEL PRICE



BASIC FUEL PRICE IN SA CENTS PER LITRE

