

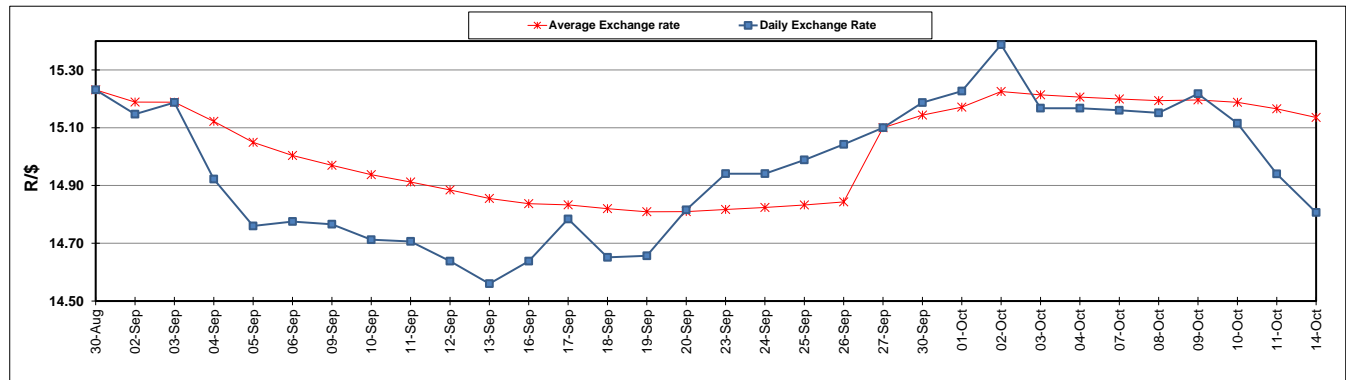
	PETROL 95 ULP	PETROL 93 ULP & LRP	DIESEL 0.05%	DIESEL 0.005%	ILL. PAR.
GAUTENG PUMP PRICE (SA c/l) AS FROM 02/10/2019	1,621.000	1,579.000	-	-	-
WHOLESALE PRICE (SA c/l) AS FROM 02/10/2019	-	-	1,484.210	1,488.610	961.678
SINGLE NATIONAL MAXIMUM RETAIL PRICE	-	-	-	-	1,228.000
BASIC FUEL PRICE - 14/10/2019 (SA c/l)	698.854	655.604	742.556	749.629	739.750
PRESS RELEASE CONTRIBUTION TO BFP 02/10/2019 - 14/10/2019 (SA c/l)	722.170	690.170	770.630	775.030	779.128
UNIT OVER/(UNDER) RECOVERY - 14/10/2019 (SA c/l)	23.316	34.566	28.074	25.401	39.378
AVERAGE BASIC FUEL PRICE 27/09/2019 - 14/10/2019	727.648	686.453	764.697	770.918	769.920
AVERAGE UNIT OVER/(UNDER) RECOVERY 27/09/2019 - 14/10/2019	(9.978)	4.717	(0.317)	(2.138)	2.958

ANALYSIS MOVEMENT OF AVERAGE OVER/(UNDER) RECOVERY

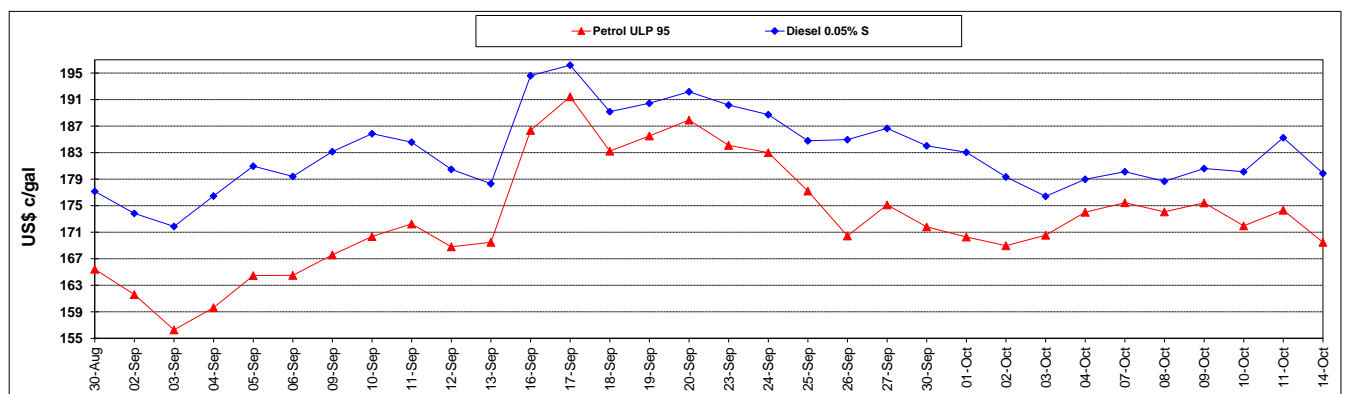
	PETROL 95	PETROL 93	DIESEL 0.05%	DIESEL 0.005%	ILL. PAR.
- MOVEMENT IN INTERNATIONAL PRODUCT PRICES	4.079	17.978	14.456	12.755	17.832
- MOVEMENT IN EXCHANGE RATE	(14.057)	(13.261)	(14.773)	(14.893)	(14.874)
AVERAGE UNIT OVER/(UNDER) RECOVERY 27/09/2019 - 14/10/2019	(9.978)	4.717	(0.317)	(2.138)	2.958

R/\$ EXCHANGE RATE - (R/\$14.8067 - 14/10/2019)

EXCHANGE RATE USED IN BASIC FUEL PRICE



INTERNATIONAL PRODUCT PRICES OF BASKET USED IN BASIC FUEL PRICE



BASIC FUEL PRICE IN SA CENTS PER LITRE

