

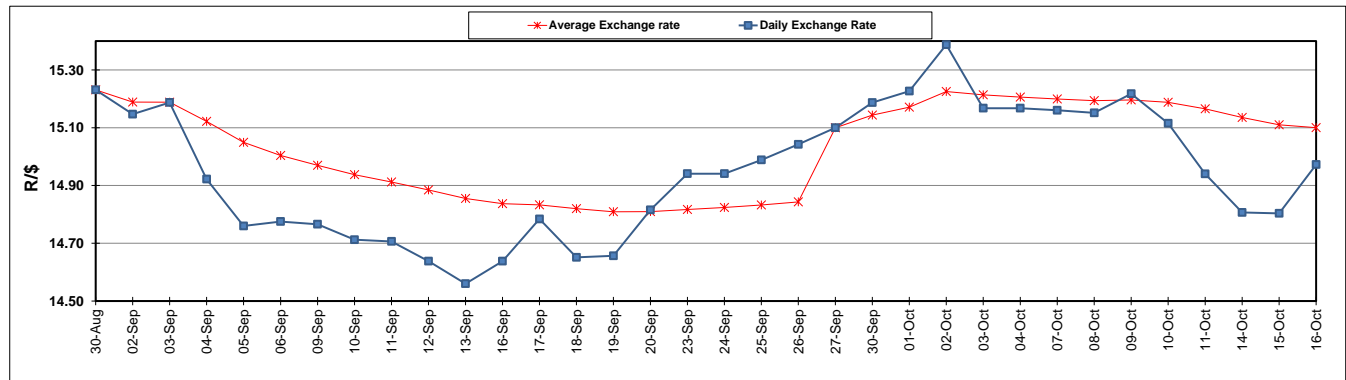
	PETROL 95 ULP	PETROL 93 ULP & LRP	DIESEL 0.05%	DIESEL 0.005%	ILL. PAR.
GAUTENG PUMP PRICE (SA c/l) AS FROM 02/10/2019	1 621.000	1 579.000	-	-	-
WHOLESALE PRICE (SA c/l) AS FROM 02/10/2019	-	-	1 484.210	1 488.610	961.678
SINGLE NATIONAL MAXIMUM RETAIL PRICE	-	-	-	-	1 228.000
BASIC FUEL PRICE - 16/10/2019 (SA c/l)	706.044	662.946	743.356	749.360	739.612
PRESS RELEASE CONTRIBUTION TO BFP 02/10/2019 - 16/10/2019 (SA c/l)	722.170	690.170	770.630	775.030	779.128
UNIT OVER/(UNDER) RECOVERY - 16/10/2019 (SA c/l)	16.126	27.224	27.274	25.670	39.516
AVERAGE BASIC FUEL PRICE 27/09/2019 - 16/10/2019	724.127	682.650	760.761	766.982	764.734
AVERAGE UNIT OVER/(UNDER) RECOVERY 27/09/2019 - 16/10/2019	(5.814)	8.377	4.512	2.691	9.037

ANALYSIS MOVEMENT OF AVERAGE OVER/(UNDER) RECOVERY

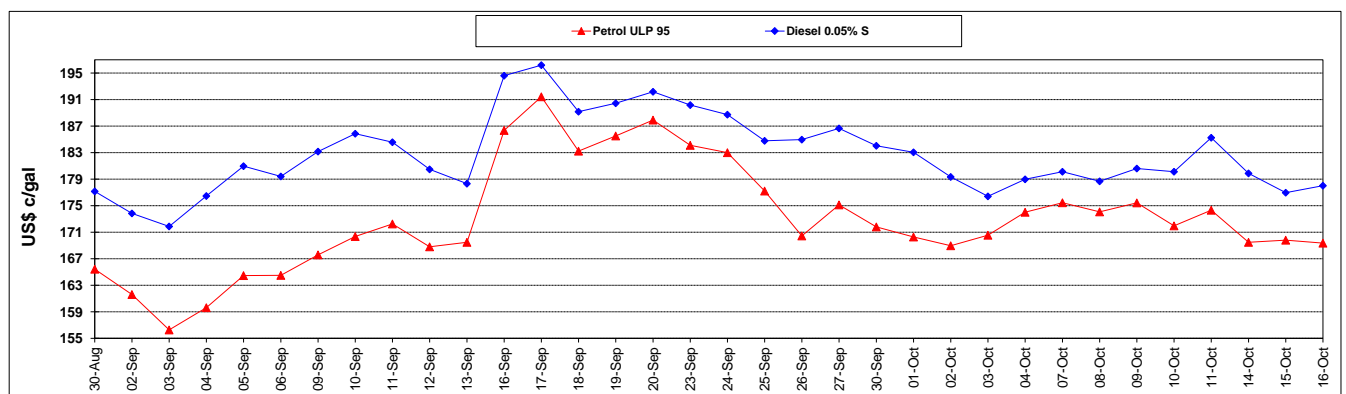
	PETROL 95	PETROL 93	DIESEL 0.05%	DIESEL 0.005%	ILL. PAR.
- MOVEMENT IN INTERNATIONAL PRODUCT PRICES	6.515	20.000	17.465	15.750	22.057
- MOVEMENT IN EXCHANGE RATE	(12.329)	(11.623)	(12.953)	(13.059)	(13.020)
AVERAGE UNIT OVER/(UNDER) RECOVERY 27/09/2019 - 16/10/2019	(5.814)	8.377	4.512	2.691	9.037

R/\$ EXCHANGE RATE - (R/\$14.9724 - 16/10/2019)

EXCHANGE RATE USED IN BASIC FUEL PRICE



INTERNATIONAL PRODUCT PRICES OF BASKET USED IN BASIC FUEL PRICE



BASIC FUEL PRICE IN SA CENTS PER LITRE

