

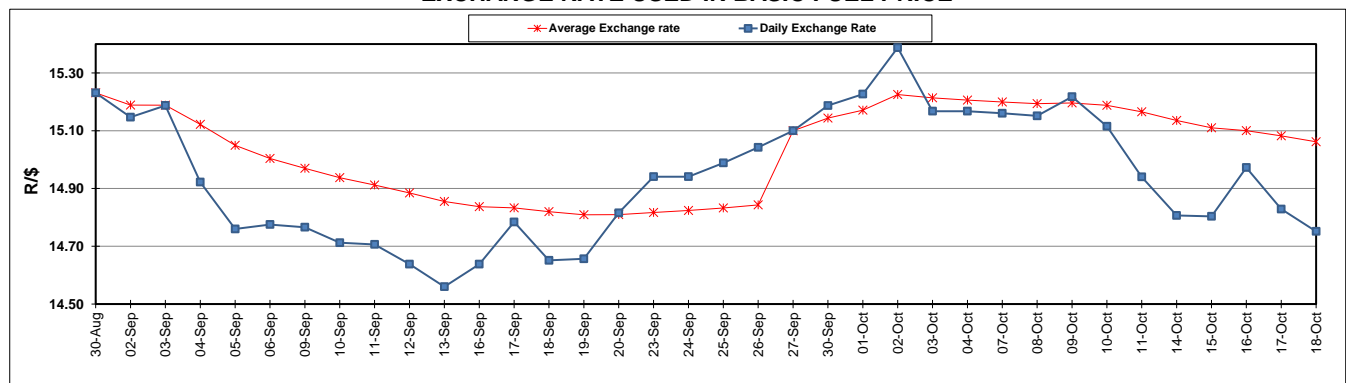
	PETROL 95 ULP	PETROL 93 ULP & LRP	DIESEL 0.05%	DIESEL 0.005%	ILL. PAR.
GAUTENG PUMP PRICE (SA c/l) AS FROM 02/10/2019	1,621.000	1,579.000	-	-	-
WHOLESALE PRICE (SA c/l) AS FROM 02/10/2019	-	-	1,484.210	1,488.610	961.678
SINGLE NATIONAL MAXIMUM RETAIL PRICE	-	-	-	-	1,228.000
BASIC FUEL PRICE - 18/10/2019 (SA c/l)	688.772	654.935	736.484	742.324	734.731
PRESS RELEASE CONTRIBUTION TO BFP 02/10/2019 - 18/10/2019 (SA c/l)	722.170	690.170	770.630	775.030	779.128
UNIT OVER/(UNDER) RECOVERY - 18/10/2019 (SA c/l)	33.398	35.235	34.146	32.706	44.397
AVERAGE BASIC FUEL PRICE 27/09/2019 - 18/10/2019	719.989	679.093	757.545	763.757	760.705
AVERAGE UNIT OVER/(UNDER) RECOVERY 27/09/2019 - 18/10/2019	(1.194)	11.827	8.398	6.586	13.736

ANALYSIS MOVEMENT OF AVERAGE OVER/(UNDER) RECOVERY

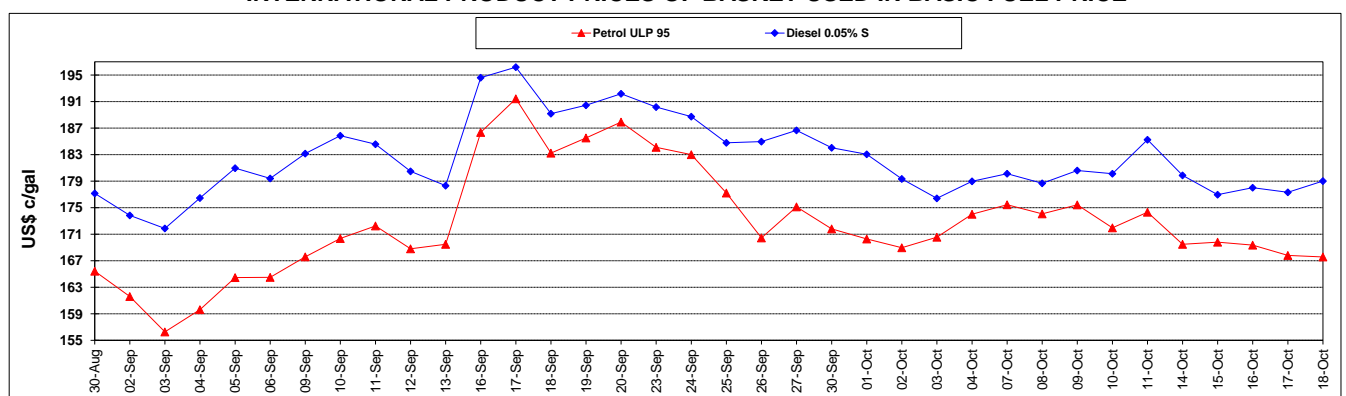
	PETROL 95	PETROL 93	DIESEL 0.05%	DIESEL 0.005%	ILL. PAR.
- MOVEMENT IN INTERNATIONAL PRODUCT PRICES	9.241	21.670	19.378	17.656	24.762
- MOVEMENT IN EXCHANGE RATE	(10.435)	(9.843)	(10.980)	(11.070)	(11.026)
AVERAGE UNIT OVER/(UNDER) RECOVERY 27/09/2019 - 18/10/2019	(1.194)	11.827	8.398	6.586	13.736

R/\$ EXCHANGE RATE - (R/\$14.7515 - 18/10/2019)

EXCHANGE RATE USED IN BASIC FUEL PRICE



INTERNATIONAL PRODUCT PRICES OF BASKET USED IN BASIC FUEL PRICE



BASIC FUEL PRICE IN SA CENTS PER LITRE

