

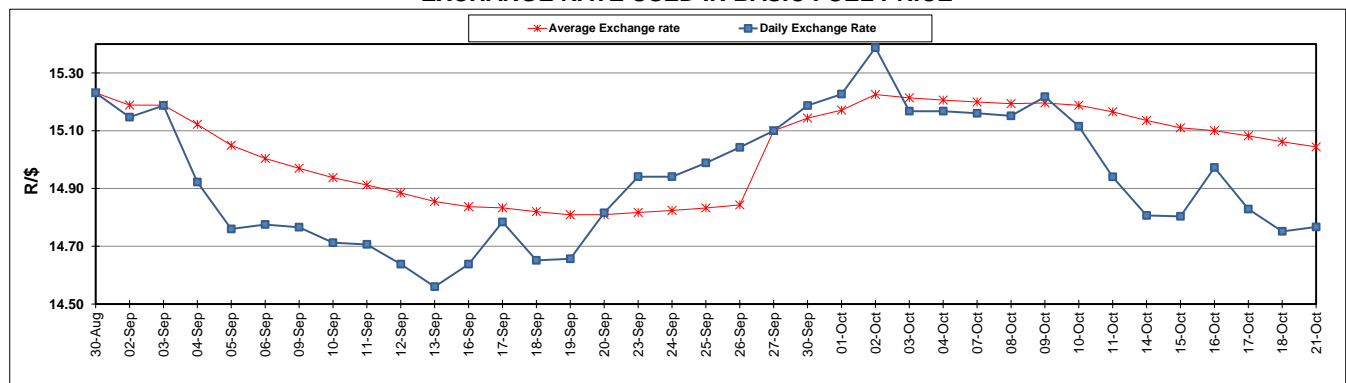
	PETROL 95 ULP	PETROL 93 ULP & LRP	DIESEL 0.05%	DIESEL 0.005%	ILL. PAR.
GAUTENG PUMP PRICE (SA c/l) AS FROM 02/10/2019	1,621.000	1,579.000	-	-	-
WHOLESALE PRICE (SA c/l) AS FROM 02/10/2019	-	-	1,484.210	1,488.610	961.678
SINGLE NATIONAL MAXIMUM RETAIL PRICE	-	-	-	-	1,228.000
BASIC FUEL PRICE - 21/10/2019 (SA c/l)	684.262	650.390	734.170	739.883	729.732
PRESS RELEASE CONTRIBUTION TO BFP 02/10/2019 - 21/10/2019 (SA c/l)	722.170	690.170	770.630	775.030	779.128
UNIT OVER/(UNDER) RECOVERY - 21/10/2019 (SA c/l)	37.908	39.780	36.460	35.147	49.396
AVERAGE BASIC FUEL PRICE 27/09/2019 - 21/10/2019	717.887	677.404	756.170	762.352	758.883
AVERAGE UNIT OVER/(UNDER) RECOVERY 27/09/2019 - 21/10/2019	1.106	13.471	10.049	8.266	15.833

### ANALYSIS MOVEMENT OF AVERAGE OVER/(UNDER) RECOVERY

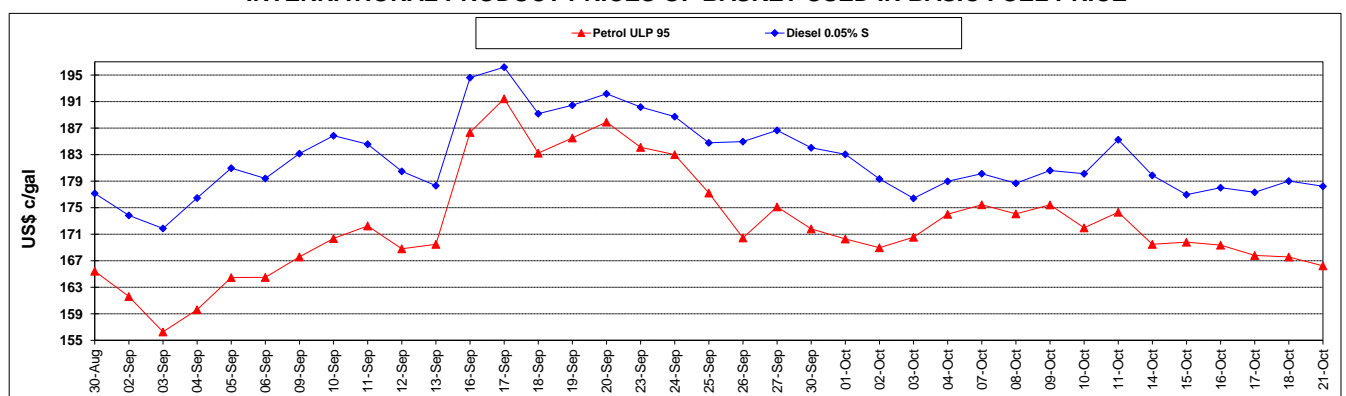
	PETROL 95	PETROL 93	DIESEL 0.05%	DIESEL 0.005%	ILL. PAR.
- MOVEMENT IN INTERNATIONAL PRODUCT PRICES	10.698	22.523	20.151	18.452	25.972
- MOVEMENT IN EXCHANGE RATE	(9.591)	(9.051)	(10.103)	(10.186)	(10.139)
AVERAGE UNIT OVER/(UNDER) RECOVERY 27/09/2019 - 21/10/2019	1.106	13.471	10.049	8.266	15.833

**R/\$ EXCHANGE RATE - (R/\$14.7669 - 21/10/2019)**

### EXCHANGE RATE USED IN BASIC FUEL PRICE



### INTERNATIONAL PRODUCT PRICES OF BASKET USED IN BASIC FUEL PRICE



### BASIC FUEL PRICE IN SA CENTS PER LITRE

