

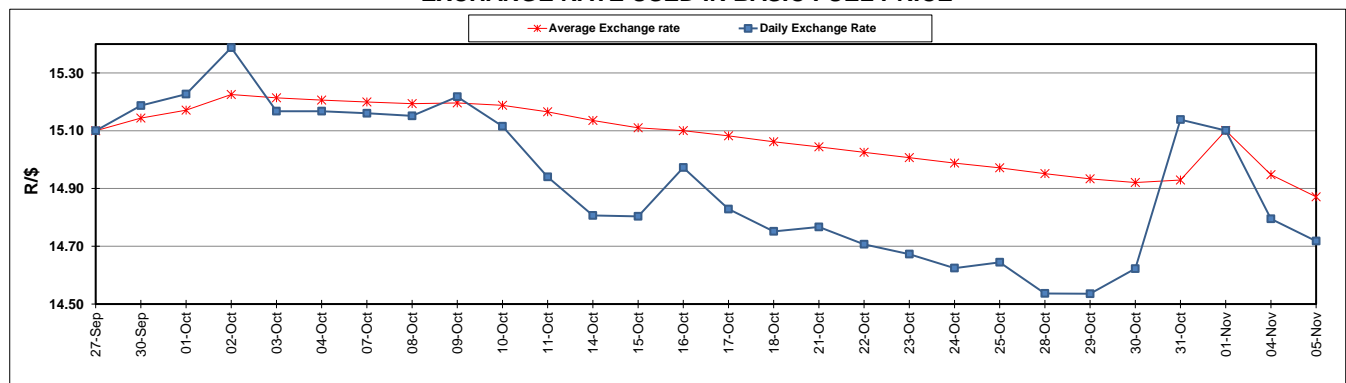
	PETROL 95 ULP	PETROL 93 ULP & LRP	DIESEL 0.05%	DIESEL 0.005%	ILL. PAR.
GAUTENG PUMP PRICE (SA c/l) AS FROM 06/11/2019	1,608.000	1,566.000	-	-	-
WHOLESALE PRICE (SA c/l) AS FROM 06/11/2019	-	-	1,468.210	1,474.610	938.678
SINGLE NATIONAL MAXIMUM RETAIL PRICE	-	-	-	-	1,197.000
BASIC FUEL PRICE - 05/11/2019 (SA c/l)	719.841	684.180	744.716	751.049	745.391
PRESS RELEASE CONTRIBUTION TO BFP 01/11/2019 - 05/11/2019 (SA c/l)	722.170	690.170	770.630	775.030	779.128
UNIT OVER/(UNDER) RECOVERY - 05/11/2019 (SA c/l)	2.329	5.990	25.914	23.981	33.737
AVERAGE BASIC FUEL PRICE 01/11/2019 - 05/11/2019	714.936	681.973	747.309	754.546	746.599
AVERAGE UNIT OVER/(UNDER) RECOVERY 01/11/2019 - 05/11/2019	7.234	8.197	23.321	20.484	32.529

ANALYSIS MOVEMENT OF AVERAGE OVER/(UNDER) RECOVERY

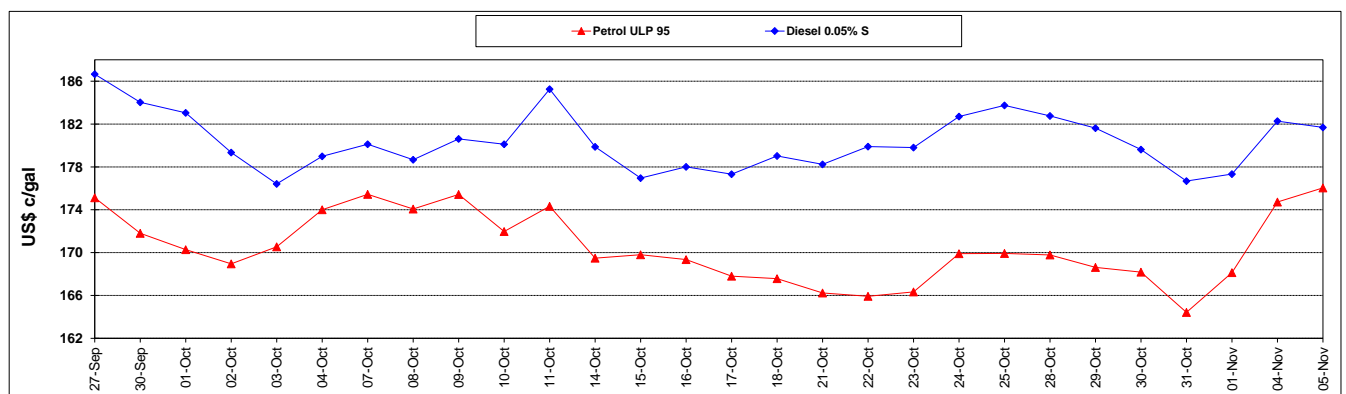
	PETROL 95	PETROL 93	DIESEL 0.05%	DIESEL 0.005%	ILL. PAR.
- MOVEMENT IN INTERNATIONAL PRODUCT PRICES	4.441	5.533	20.401	17.536	29.612
- MOVEMENT IN EXCHANGE RATE	2.793	2.664	2.920	2.948	2.917
AVERAGE UNIT OVER/(UNDER) RECOVERY 01/11/2019 - 05/11/2019	7.234	8.197	23.321	20.484	32.529

R/\$ EXCHANGE RATE - (R/\$14.7179 - 05/11/2019)

EXCHANGE RATE USED IN BASIC FUEL PRICE



INTERNATIONAL PRODUCT PRICES OF BASKET USED IN BASIC FUEL PRICE



BASIC FUEL PRICE IN SA CENTS PER LITRE

