

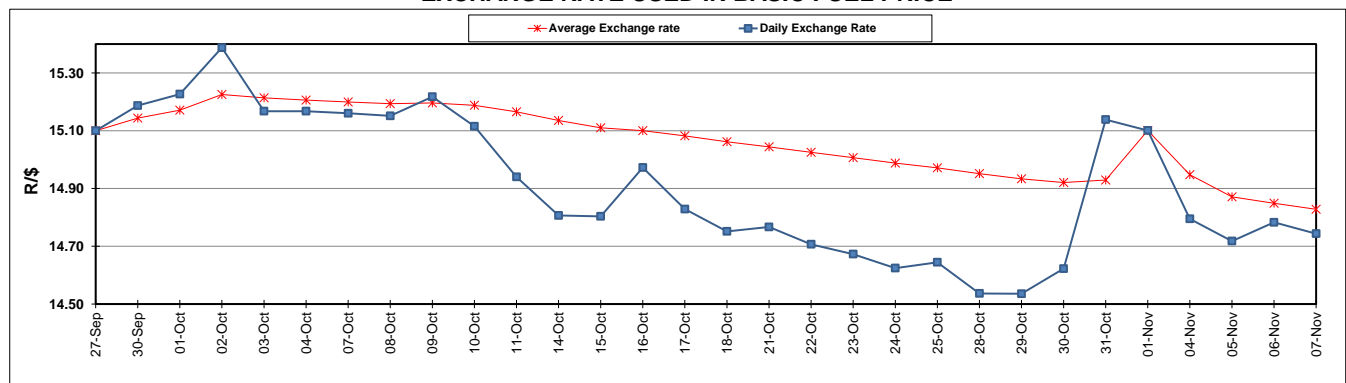
	PETROL 95 ULP	PETROL 93 ULP & LRP	DIESEL 0.05%	DIESEL 0.005%	ILL. PAR.
GAUTENG PUMP PRICE (SA c/l) AS FROM 06/11/2019	1,608.000	1,566.000	-	-	-
WHOLESALE PRICE (SA c/l) AS FROM 06/11/2019	-	-	1,468.210	1,474.610	938.678
SINGLE NATIONAL MAXIMUM RETAIL PRICE	-	-	-	-	1,197.000
BASIC FUEL PRICE - 07/11/2019 (SA c/l)	721.936	686.823	736.788	742.417	739.921
PRESS RELEASE CONTRIBUTION TO BFP 06/11/2019 - 07/11/2019 (SA c/l)	709.170	677.170	754.630	761.030	756.128
UNIT OVER/(UNDER) RECOVERY - 07/11/2019 (SA c/l)	(12.766)	(9.653)	17.842	18.613	16.207
AVERAGE BASIC FUEL PRICE 01/11/2019 - 07/11/2019	717.703	683.739	744.679	751.261	745.263
AVERAGE UNIT OVER/(UNDER) RECOVERY 01/11/2019 - 07/11/2019	(0.733)	1.231	19.551	18.169	24.665

ANALYSIS MOVEMENT OF AVERAGE OVER/(UNDER) RECOVERY

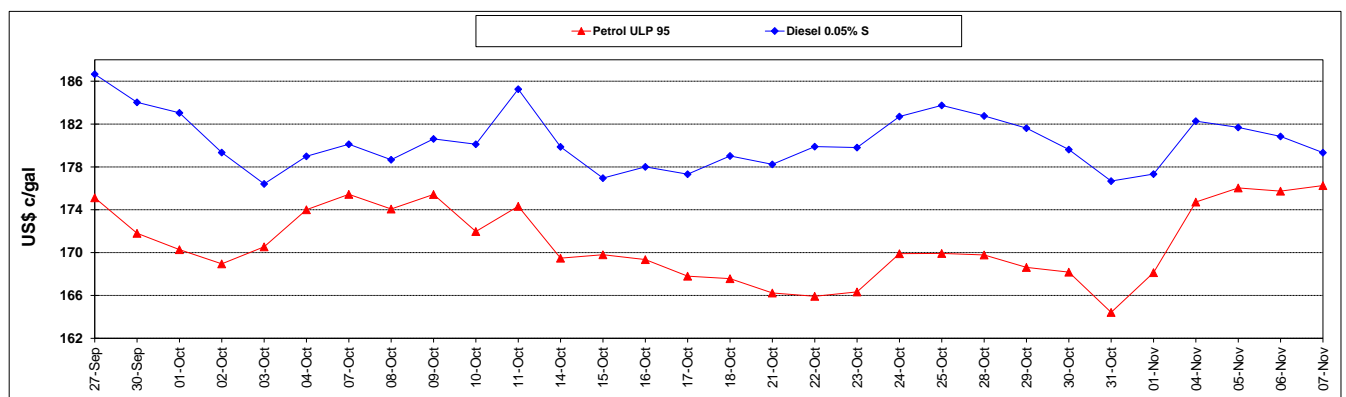
	PETROL 95	PETROL 93	DIESEL 0.05%	DIESEL 0.005%	ILL. PAR.
- MOVEMENT IN INTERNATIONAL PRODUCT PRICES	(5.636)	(3.440)	14.464	13.037	19.574
- MOVEMENT IN EXCHANGE RATE	4.903	4.671	5.087	5.132	5.091
AVERAGE UNIT OVER/(UNDER) RECOVERY 01/11/2019 - 07/11/2019	(0.733)	1.231	19.551	18.169	24.665

R/\$ EXCHANGE RATE - (R/\$14.7437 - 07/11/2019)

EXCHANGE RATE USED IN BASIC FUEL PRICE



INTERNATIONAL PRODUCT PRICES OF BASKET USED IN BASIC FUEL PRICE



BASIC FUEL PRICE IN SA CENTS PER LITRE

