

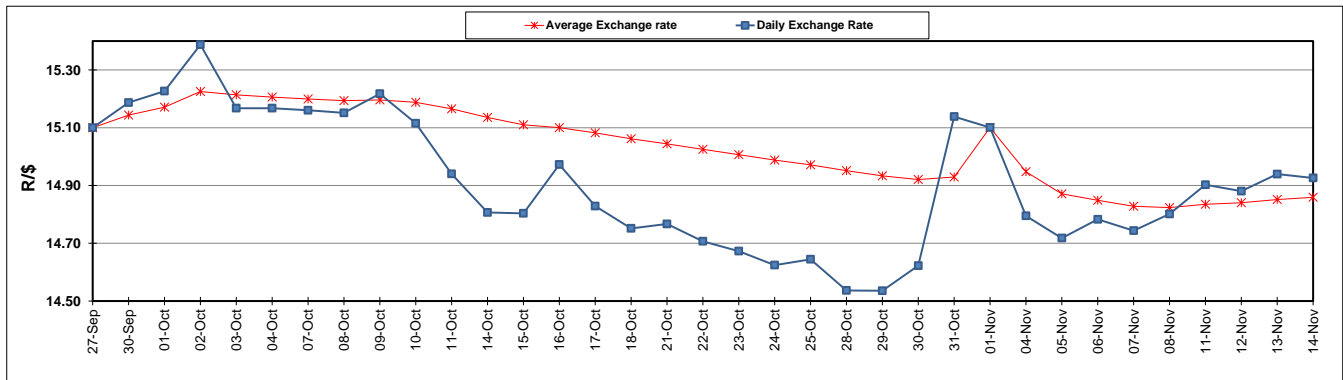
	PETROL 95 ULP	PETROL 93 ULP & LRP	DIESEL 0.05%	DIESEL 0.005%	ILL. PAR.
GAUTENG PUMP PRICE (SA c/l) AS FROM 06/11/2019	1,608.000	1,566.000	-	-	-
WHOLESALE PRICE (SA c/l) AS FROM 06/11/2019	-	-	1,468.210	1,474.610	938.678
SINGLE NATIONAL MAXIMUM RETAIL PRICE	-	-	-	-	1,197.000
BASIC FUEL PRICE - 14/11/2019 (SA c/l)	726.425	695.836	745.743	749.828	744.135
PRESS RELEASE CONTRIBUTION TO BFP 06/11/2019 - 14/11/2019 (SA c/l)	709.170	677.170	754.630	761.030	756.128
UNIT OVER/(UNDER) RECOVERY - 14/11/2019 (SA c/l)	(17.255)	(18.666)	8.887	11.202	11.993
AVERAGE BASIC FUEL PRICE 01/11/2019 - 14/11/2019	724.391	688.455	741.202	746.884	742.435
AVERAGE UNIT OVER/(UNDER) RECOVERY 01/11/2019 - 14/11/2019	(11.321)	(7.385)	18.228	18.346	20.593

ANALYSIS MOVEMENT OF AVERAGE OVER/(UNDER) RECOVERY

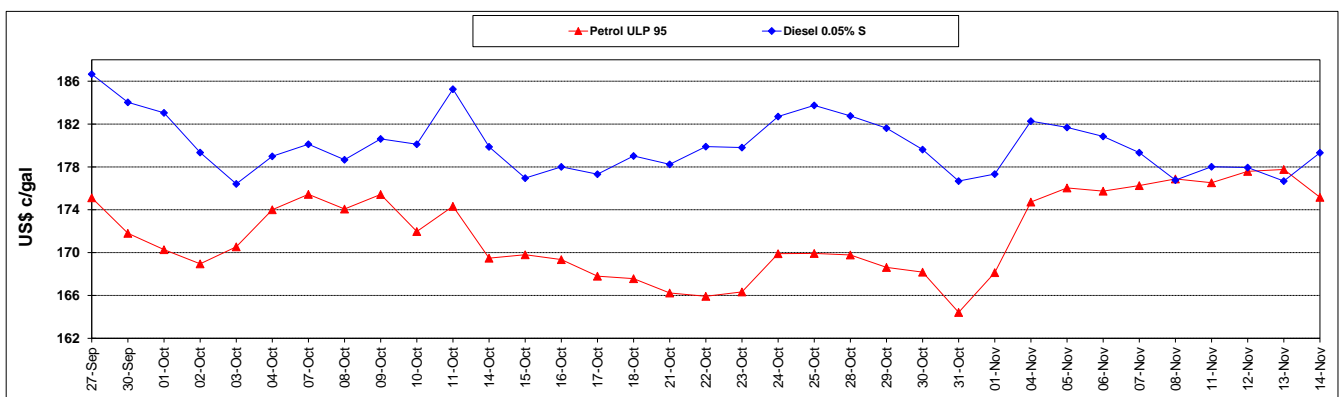
	PETROL 95	PETROL 93	DIESEL 0.05%	DIESEL 0.005%	ILL. PAR.
- MOVEMENT IN INTERNATIONAL PRODUCT PRICES	(14.748)	(10.642)	14.721	14.812	17.080
- MOVEMENT IN EXCHANGE RATE	3.427	3.257	3.507	3.534	3.513
AVERAGE UNIT OVER/(UNDER) RECOVERY 01/11/2019 - 14/11/2019	(11.321)	(7.385)	18.228	18.346	20.593

R/\$ EXCHANGE RATE - (R/\$14.9260 - 14/11/2019)

EXCHANGE RATE USED IN BASIC FUEL PRICE



INTERNATIONAL PRODUCT PRICES OF BASKET USED IN BASIC FUEL PRICE



BASIC FUEL PRICE IN SA CENTS PER LITRE

