

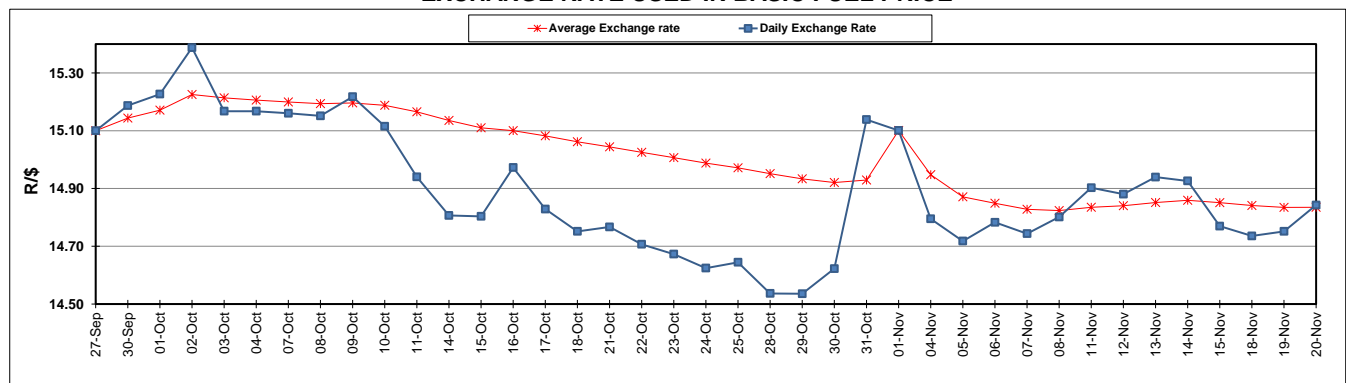
	PETROL 95 ULP	PETROL 93 ULP & LRP	DIESEL 0.05%	DIESEL 0.005%	ILL. PAR.
GAUTENG PUMP PRICE (SA c/l) AS FROM 06/11/2019	1,608.000	1,566.000	-	-	-
WHOLESALE PRICE (SA c/l) AS FROM 06/11/2019	-	-	1,468.210	1,474.610	938.678
SINGLE NATIONAL MAXIMUM RETAIL PRICE	-	-	-	-	1,197.000
BASIC FUEL PRICE - 20/11/2019 (SA c/l)	720.332	688.176	718.300	722.647	719.728
PRESS RELEASE CONTRIBUTION TO BFP 06/11/2019 - 20/11/2019 (SA c/l)	709.170	677.170	754.630	761.030	756.128
UNIT OVER/(UNDER) RECOVERY - 20/11/2019 (SA c/l)	(11.162)	(11.006)	36.330	38.383	36.400
AVERAGE BASIC FUEL PRICE 01/11/2019 - 20/11/2019	722.224	687.699	737.417	742.689	738.243
AVERAGE UNIT OVER/(UNDER) RECOVERY 01/11/2019 - 20/11/2019	(10.269)	(7.743)	20.642	21.341	22.813

ANALYSIS MOVEMENT OF AVERAGE OVER/(UNDER) RECOVERY

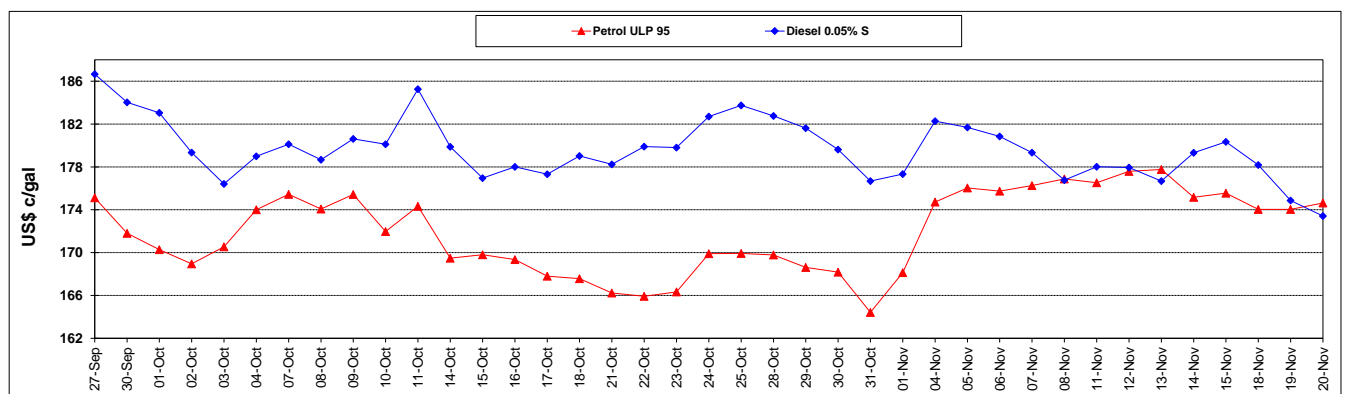
	PETROL 95	PETROL 93	DIESEL 0.05%	DIESEL 0.005%	ILL. PAR.
- MOVEMENT IN INTERNATIONAL PRODUCT PRICES	(14.859)	(12.114)	15.955	16.620	18.121
- MOVEMENT IN EXCHANGE RATE	4.591	4.371	4.687	4.721	4.693
AVERAGE UNIT OVER/(UNDER) RECOVERY 01/11/2019 - 20/11/2019	(10.269)	(7.743)	20.642	21.341	22.813

R/\$ EXCHANGE RATE - (R/\$14.8426 - 20/11/2019)

EXCHANGE RATE USED IN BASIC FUEL PRICE



INTERNATIONAL PRODUCT PRICES OF BASKET USED IN BASIC FUEL PRICE



BASIC FUEL PRICE IN SA CENTS PER LITRE

