

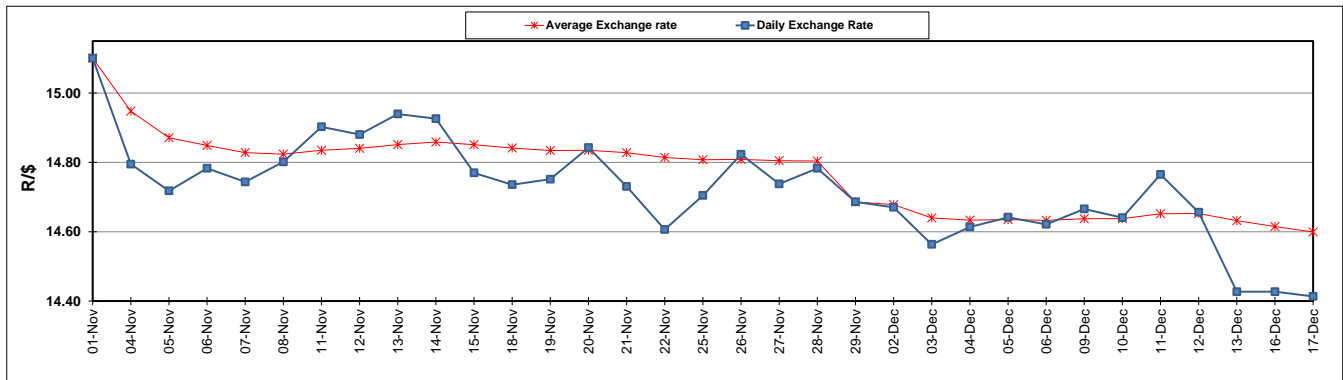
	PETROL 95 ULP	PETROL 93 ULP & LRP	DIESEL 0.05%	DIESEL 0.005%	ILL. PAR.
GAUTENG PUMP PRICE (SA c/l) AS FROM 04/12/2019	1,630.000	1,553.000	-	-	-
WHOLESALE PRICE (SA c/l) AS FROM 04/12/2019	-	-	1,453.260	1,458.660	922.728
SINGLE NATIONAL MAXIMUM RETAIL PRICE	-	-	-	-	1,173.000
BASIC FUEL PRICE - 17/12/2019 (SA c/l)	693.218	671.963	761.802	767.596	755.241
PRESS RELEASE CONTRIBUTION TO BFP 04/12/2019 - 17/12/2019 (SA c/l)	719.570	687.570	733.630	739.030	732.128
UNIT OVER/(UNDER) RECOVERY - 17/12/2019 (SA c/l)	26.352	15.607	(28.172)	(28.566)	(23.113)
AVERAGE BASIC FUEL PRICE 29/11/2019 - 17/12/2019	699.263	675.885	741.029	746.523	736.220
AVERAGE UNIT OVER/(UNDER) RECOVERY 29/11/2019 - 17/12/2019	17.907	9.285	(2.553)	(2.416)	1.446

ANALYSIS MOVEMENT OF AVERAGE OVER/(UNDER) RECOVERY

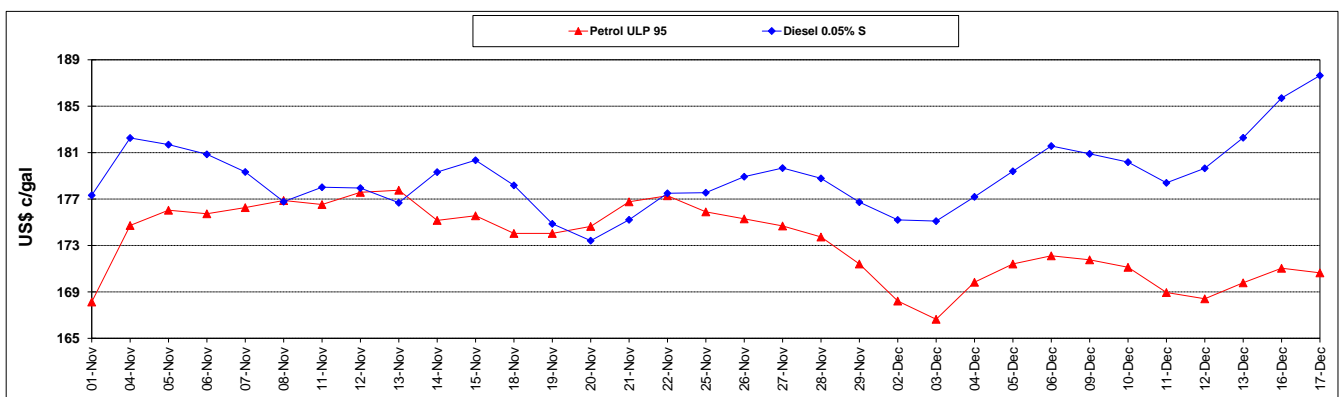
	PETROL 95	PETROL 93	DIESEL 0.05%	DIESEL 0.005%	ILL. PAR.
- MOVEMENT IN INTERNATIONAL PRODUCT PRICES	8.117	(0.178)	(12.928)	(12.868)	(8.862)
- MOVEMENT IN EXCHANGE RATE	9.790	9.463	10.375	10.452	10.308
AVERAGE UNIT OVER/(UNDER) RECOVERY 29/11/2019 - 17/12/2019	17.907	9.285	(2.553)	(2.416)	1.446

R/\$ EXCHANGE RATE - (R/\$14.4134 - 17/12/2019)

EXCHANGE RATE USED IN BASIC FUEL PRICE



INTERNATIONAL PRODUCT PRICES OF BASKET USED IN BASIC FUEL PRICE



BASIC FUEL PRICE IN SA CENTS PER LITRE

