

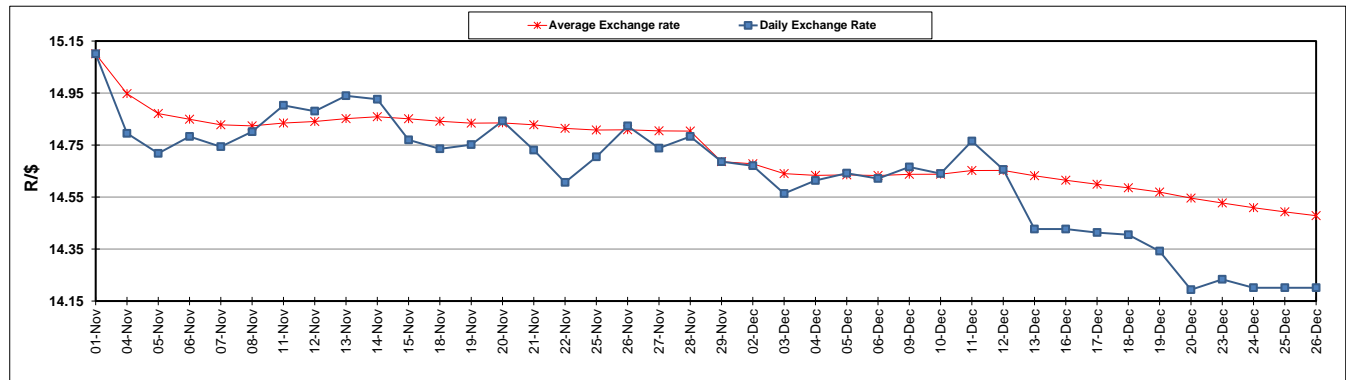
	PETROL 95 ULP	PETROL 93 ULP & LRP	DIESEL 0.05%	DIESEL 0.005%	ILL. PAR.
GAUTENG PUMP PRICE (SA c/l) AS FROM 04/12/2019	1,630.000	1,553.000	-	-	-
WHOLESALE PRICE (SA c/l) AS FROM 04/12/2019	-	-	1,453.260	1,458.660	922.728
SINGLE NATIONAL MAXIMUM RETAIL PRICE	-	-	-	-	1,173.000
BASIC FUEL PRICE - 26/12/2019 (SA c/l)	702.577	682.224	758.120	763.899	748.486
PRESS RELEASE CONTRIBUTION TO BFP 04/12/2019 - 26/12/2019 (SA c/l)	719.570	687.570	733.630	739.030	732.128
UNIT OVER/(UNDER) RECOVERY - 26/12/2019 (SA c/l)	16.993	5.346	(24.490)	(24.869)	(16.358)
AVERAGE BASIC FUEL PRICE 29/11/2019 - 26/12/2019	698.663	676.604	746.685	752.234	740.794
AVERAGE UNIT OVER/(UNDER) RECOVERY 29/11/2019 - 26/12/2019	19.347	9.406	(9.905)	(9.904)	(5.066)

ANALYSIS MOVEMENT OF AVERAGE OVER/(UNDER) RECOVERY

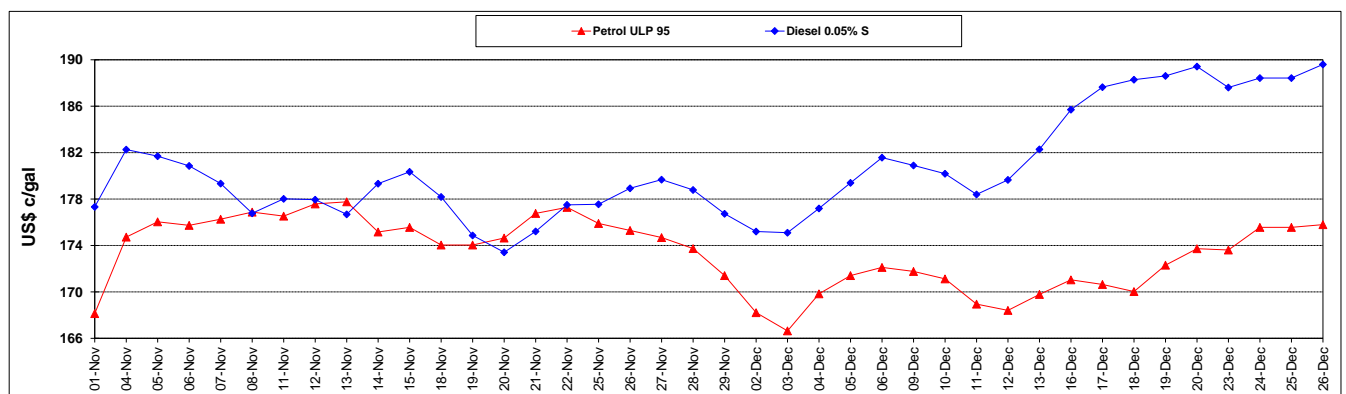
	PETROL 95	PETROL 93	DIESEL 0.05%	DIESEL 0.005%	ILL. PAR.
- MOVEMENT IN INTERNATIONAL PRODUCT PRICES	3.649	(5.796)	(26.681)	(26.805)	(21.710)
- MOVEMENT IN EXCHANGE RATE	15.698	15.202	16.776	16.901	16.644
AVERAGE UNIT OVER/(UNDER) RECOVERY 29/11/2019 - 26/12/2019	19.347	9.406	(9.905)	(9.904)	(5.066)

R/\$ EXCHANGE RATE - (R/\$14.2012 - 26/12/2019)

EXCHANGE RATE USED IN BASIC FUEL PRICE



INTERNATIONAL PRODUCT PRICES OF BASKET USED IN BASIC FUEL PRICE



BASIC FUEL PRICE IN SA CENTS PER LITRE

