

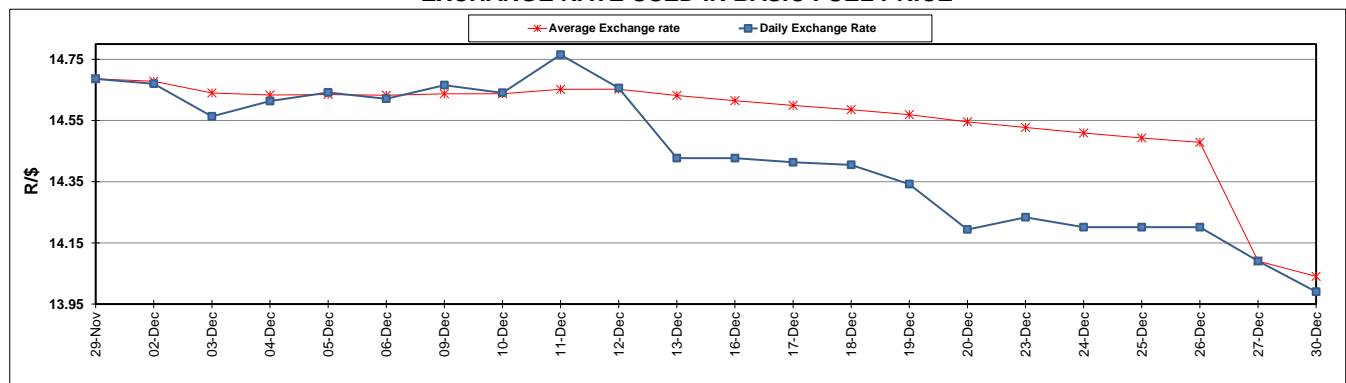
	PETROL 95 ULP	PETROL 93 ULP & LRP	DIESEL 0.05%	DIESEL 0.005%	ILL. PAR.
GAUTENG PUMP PRICE (SA c/l) AS FROM 01/01/2020	1,616.000	1,584.000	-	-	-
WHOLESALE PRICE (SA c/l) AS FROM 01/01/2020	-	-	1,462.260	1,467.660	927.728
SINGLE NATIONAL MAXIMUM RETAIL PRICE	-	-	-	-	1,180.000
BASIC FUEL PRICE - 30/12/2019 (SA c/l)	691.734	675.217	754.533	760.072	743.587
PRESS RELEASE CONTRIBUTION TO BFP 27/12/2019 - 30/12/2019 (SA c/l)	719.570	687.570	733.630	739.030	732.128
UNIT OVER/(UNDER) RECOVERY - 30/12/2019 (SA c/l)	27.836	12.353	(20.903)	(21.042)	(11.459)
AVERAGE BASIC FUEL PRICE 27/12/2019 - 30/12/2019	699.678	681.329	758.148	763.749	746.978
AVERAGE UNIT OVER/(UNDER) RECOVERY 27/12/2019 - 30/12/2019	19.893	6.242	(24.518)	(24.719)	(14.850)

### ANALYSIS MOVEMENT OF AVERAGE OVER/(UNDER) RECOVERY

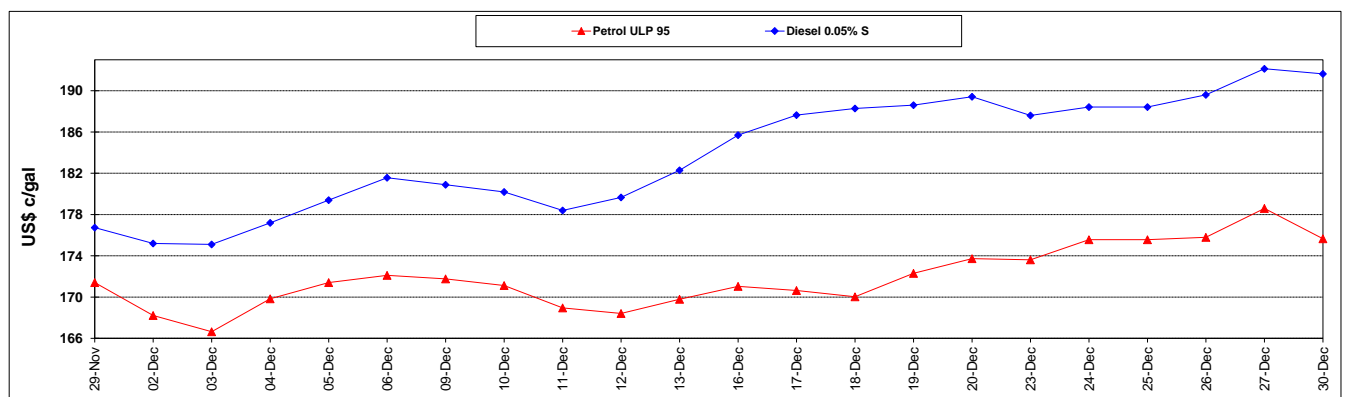
	PETROL 95	PETROL 93	DIESEL 0.05%	DIESEL 0.005%	ILL. PAR.
- MOVEMENT IN INTERNATIONAL PRODUCT PRICES	(1.935)	(15.014)	(48.169)	(48.545)	(38.152)
- MOVEMENT IN EXCHANGE RATE	21.827	21.255	23.651	23.826	23.302
AVERAGE UNIT OVER/(UNDER) RECOVERY 27/12/2019 - 30/12/2019	19.893	6.242	(24.518)	(24.719)	(14.850)

### R/\$ EXCHANGE RATE - (R/\$13.9902 - 30/12/2019)

#### EXCHANGE RATE USED IN BASIC FUEL PRICE



#### INTERNATIONAL PRODUCT PRICES OF BASKET USED IN BASIC FUEL PRICE



#### BASIC FUEL PRICE IN SA CENTS PER LITRE

