

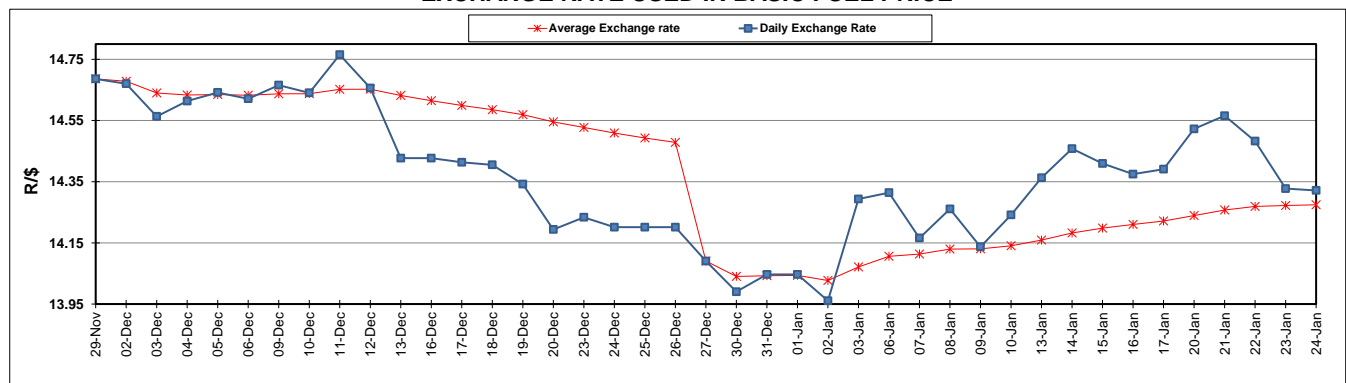
	PETROL 95 ULP	PETROL 93 ULP & LRP	DIESEL 0.05%	DIESEL 0.005%	ILL. PAR.
GAUTENG PUMP PRICE (SA c/l) AS FROM 01/01/2020	1,616.000	1,584.000	-	-	-
WHOLESALE PRICE (SA c/l) AS FROM 01/01/2020	-	-	1,462.260	1,467.660	927.728
SINGLE NATIONAL MAXIMUM RETAIL PRICE	-	-	-	-	1,180.000
BASIC FUEL PRICE - 24/01/2020 (SA c/l)	657.080	643.976	694.695	698.875	698.754
PRESS RELEASE CONTRIBUTION TO BFP 01/01/2020 - 24/01/2020 (SA c/l)	699.970	677.970	742.630	748.030	737.128
UNIT OVER/(UNDER) RECOVERY - 24/01/2020 (SA c/l)	42.890	33.994	47.935	49.155	38.374
AVERAGE BASIC FUEL PRICE 27/12/2019 - 24/01/2020	690.973	677.085	739.650	744.782	735.798
AVERAGE UNIT OVER/(UNDER) RECOVERY 27/12/2019 - 24/01/2020	11.797	2.257	1.695	1.963	0.616

### ANALYSIS MOVEMENT OF AVERAGE OVER/(UNDER) RECOVERY

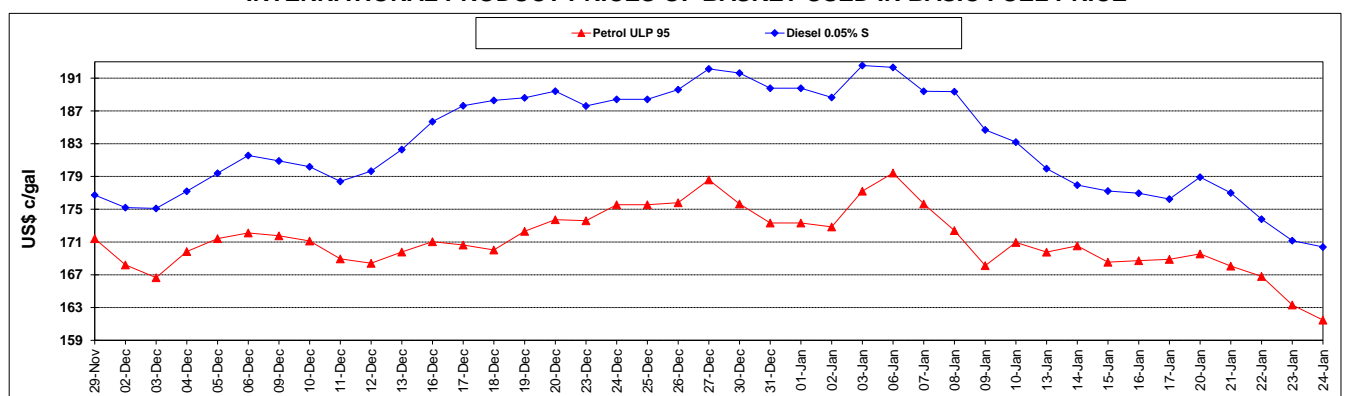
	PETROL 95	PETROL 93	DIESEL 0.05%	DIESEL 0.005%	ILL. PAR.
- MOVEMENT IN INTERNATIONAL PRODUCT PRICES	1.922	(7.420)	(8.877)	(8.682)	(9.900)
- MOVEMENT IN EXCHANGE RATE	9.875	9.676	10.571	10.644	10.516
AVERAGE UNIT OVER/(UNDER) RECOVERY 27/12/2019 - 24/01/2020	11.797	2.257	1.695	1.963	0.616

**R/\$ EXCHANGE RATE - (R/\$14.3214 - 24/01/2020)**

### EXCHANGE RATE USED IN BASIC FUEL PRICE



### INTERNATIONAL PRODUCT PRICES OF BASKET USED IN BASIC FUEL PRICE



### BASIC FUEL PRICE IN SA CENTS PER LITRE

