

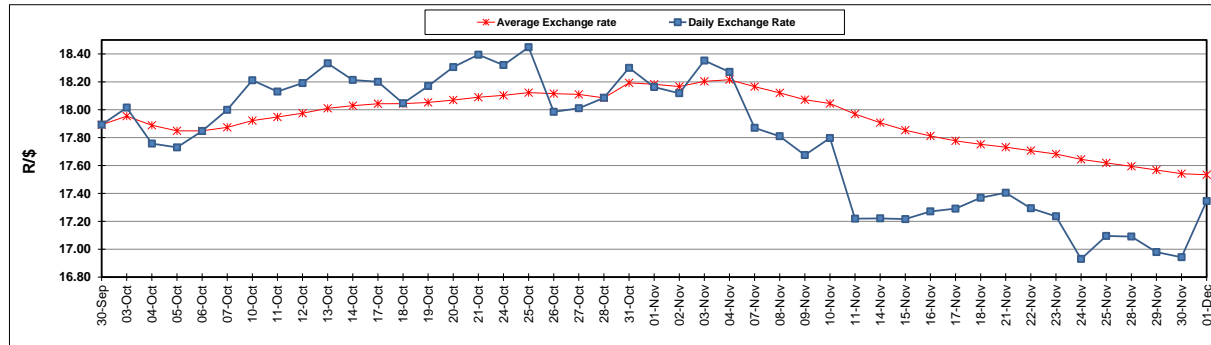
	PETROL 95 ULP	PETROL 93 ULP & LRP	DIESEL 0.05%	DIESEL 0.005%	ILL. PAR.
GAUTENG PUMP PRICE (SA c/l) AS FROM 02/11/2022	2,287.000	2,257.000	-	-	-
WHOLESALE PRICE (SA c/l) AS FROM 02/11/2022	-	-	2,548.960	2,574.360	1,776.288
SINGLE NATIONAL MAXIMUM RETAIL PRICE	-	-	-	-	2,343.000
BASIC FUEL PRICE - 01/12/2022 (SA c/l)	1,159.719	1,131.926	1,395.689	1,416.859	1,433.391
PRESS RELEASE CONTRIBUTION TO BFP 02/11/2022 - 01/12/2022 (SA c/l)	1,209.890	1,179.890	1,679.630	1,705.030	1,558.128
UNIT OVER/(UNDER) RECOVERY - 01/12/2022 (SA c/l)	50.171	47.964	283.941	288.171	124.737
AVERAGE BASIC FUEL PRICE 28/10/2022 - 01/12/2022	1,226.760	1,188.290	1,489.499	1,519.450	1,490.817
AVERAGE UNIT OVER/(UNDER) RECOVERY 28/10/2022 - 01/12/2022	(24.567)	(16.097)	171.411	166.740	58.071

ANALYSIS MOVEMENT OF AVERAGE OVER/(UNDER) RECOVERY

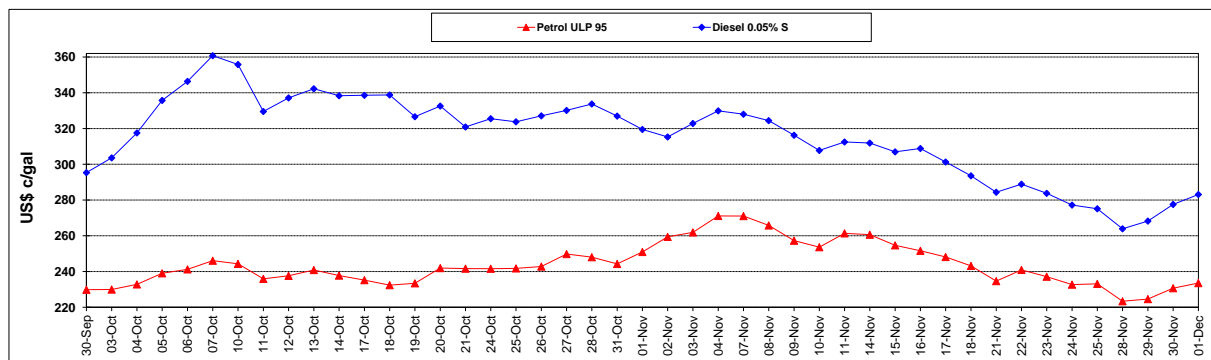
	PETROL 95	PETROL 93	DIESEL 0.05%	DIESEL 0.005%	ILL. PAR.
- MOVEMENT IN INTERNATIONAL PRODUCT PRICES	(64.874)	(55.140)	122.471	116.816	9.088
- MOVEMENT IN EXCHANGE RATE	40.307	39.043	48.940	49.924	48.983
AVERAGE UNIT OVER/(UNDER) RECOVERY 28/10/2022 - 01/12/2022	(24.567)	(16.097)	171.411	166.740	58.071

R/\$ EXCHANGE RATE - (R/\$17.3453 - 01/12/2022)

EXCHANGE RATE USED IN BASIC FUEL PRICE



INTERNATIONAL PRODUCT PRICES OF BASKET USED IN BASIC FUEL PRICE



BASIC FUEL PRICE IN SA CENTS PER LITRE

