

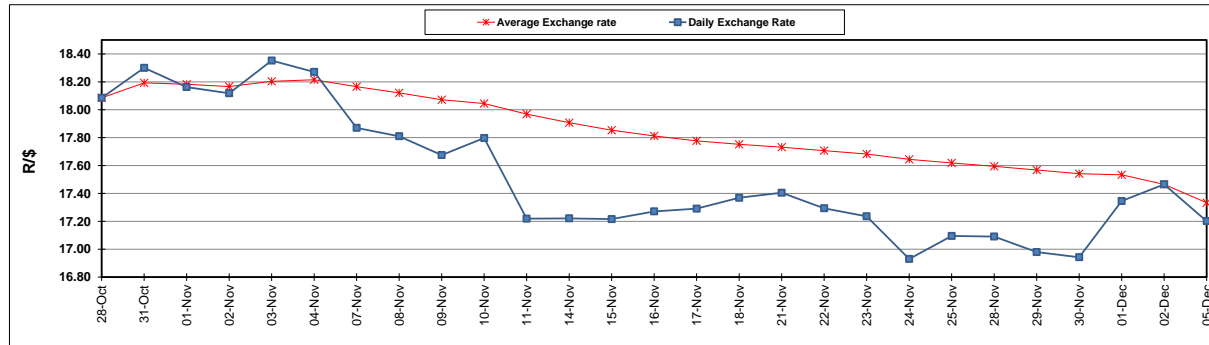
	PETROL 95 ULP	PETROL 93 ULP & LRP	DIESEL 0.05%	DIESEL 0.005%	ILL. PAR.
GAUTENG PUMP PRICE (SA c/l) AS FROM 07/12/2022	2,346.000	2,316.000	-	-	-
WHOLESALE PRICE (SA c/l) AS FROM 07/12/2022	-	-	2,391.770	2,422.170	1,718.958
SINGLE NATIONAL MAXIMUM RETAIL PRICE	-	-	-	-	2,267.000
BASIC FUEL PRICE - 05/12/2022 (SA c/l)	1,078.623	1,049.336	1,320.370	1,341.365	1,347.958
PRESS RELEASE CONTRIBUTION TO BFP 02/12/2022 - 05/12/2022 (SA c/l)	1,209.890	1,179.890	1,679.630	1,705.030	1,558.128
UNIT OVER/(UNDER) RECOVERY - 05/12/2022 (SA c/l)	131.267	130.554	359.260	363.665	210.170
AVERAGE BASIC FUEL PRICE 02/12/2022 - 05/12/2022	1,093.537	1,064.909	1,346.261	1,367.805	1,376.503
AVERAGE UNIT OVER/(UNDER) RECOVERY 02/12/2022 - 05/12/2022	116.354	114.981	333.369	337.226	181.625

ANALYSIS MOVEMENT OF AVERAGE OVER/(UNDER) RECOVERY

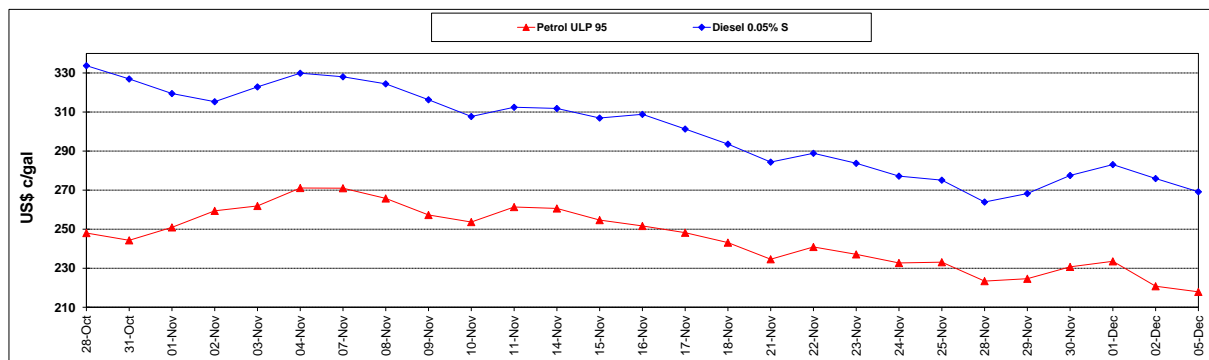
	PETROL 95	PETROL 93	DIESEL 0.05%	DIESEL 0.005%	ILL. PAR.
- MOVEMENT IN INTERNATIONAL PRODUCT PRICES	103.710	102.669	317.804	321.411	165.711
- MOVEMENT IN EXCHANGE RATE	12.643	12.312	15.565	15.814	15.914
AVERAGE UNIT OVER/(UNDER) RECOVERY 02/12/2022 - 05/12/2022	116.354	114.981	333.369	337.226	181.625

R/\$ EXCHANGE RATE - (R/\$17.2015 - 05/12/2022)

EXCHANGE RATE USED IN BASIC FUEL PRICE



INTERNATIONAL PRODUCT PRICES OF BASKET USED IN BASIC FUEL PRICE



BASIC FUEL PRICE IN SA CENTS PER LITRE

