

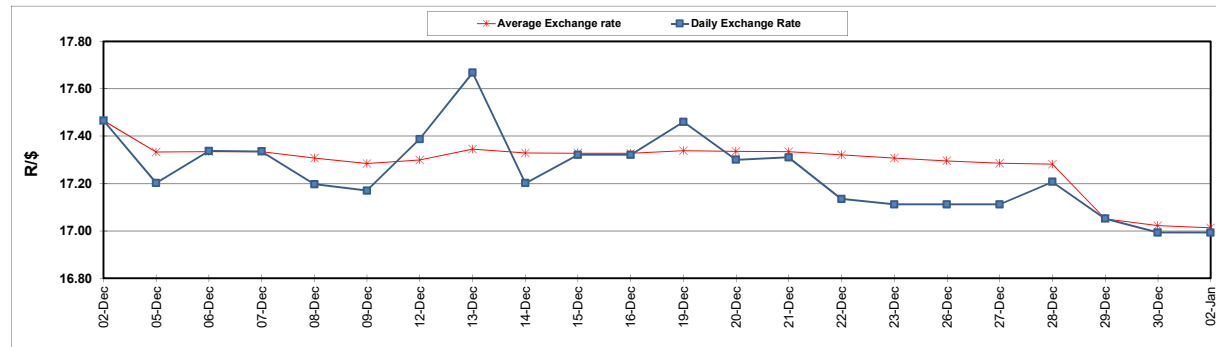
South African Cents per Litre (SA c/l)	PETROL 95 ULP	PETROL 93 ULP & LRP	DIESEL 0.05%	DIESEL 0.005%	ILL. PAR.
GAUTENG PUMP PRICE AS FROM 04/01/2015	2,139.000	2,109.000	-	-	-
WHOLESALE PRICE AS FROM 04/01/2015	-	-	2,122.870	2,141.270	1,525.958
SINGLE NATIONAL MAXIMUM RETAIL PRICE	-	-	-	-	2,009.000
BASIC FUEL PRICE - 02/01/2023	1,102.200	1,080.997	1,301.128	1,314.692	1,348.675
PRESS RELEASE CONTRIBUTION TO BFP 29/12/2022 - 02/01/2023	1,234.490	1,204.490	1,508.630	1,539.030	1,500.128
UNIT OVER/(UNDER) RECOVERY - 02/01/2023	132.290	123.493	207.502	224.338	151.453
AVERAGE BASIC FUEL PRICE 29/12/2022 - 02/01/2023	1,100.848	1,078.277	1,305.710	1,319.237	1,354.820
AVERAGE UNIT OVER/(UNDER) RECOVERY 29/12/2022 - 02/01/2023	133.642	126.213	202.920	219.793	145.308

ANALYSIS MOVEMENT OF AVERAGE OVER/(UNDER) RECOVERY

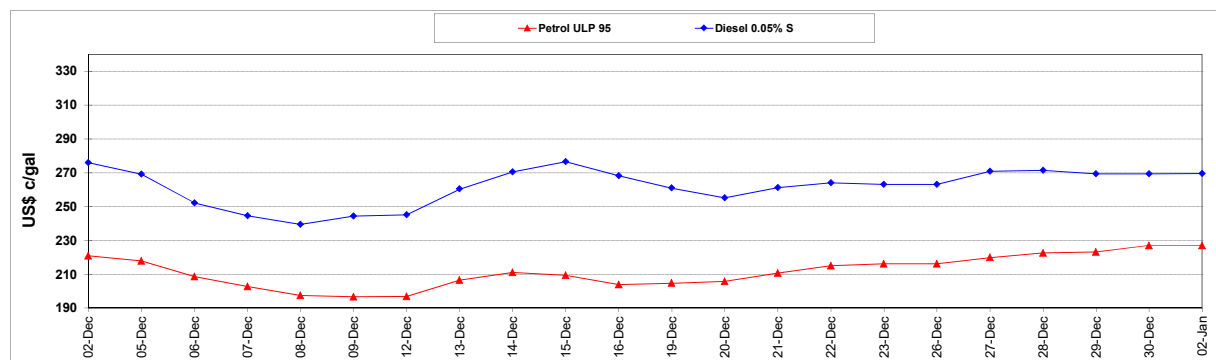
	PETROL 95	PETROL 93	DIESEL 0.05%	DIESEL 0.005%	ILL. PAR.
- MOVEMENT IN INTERNATIONAL PRODUCT PRICES	121.063	113.892	188.000	204.718	129.827
- MOVEMENT IN EXCHANGE RATE	12.579	12.321	14.920	15.075	15.481
AVERAGE UNIT OVER/(UNDER) RECOVERY 29/12/2022 - 02/01/2023	133.642	126.213	202.920	219.793	145.308

R/\$ EXCHANGE RATE - (R/\$16.9930 - 02/01/2023)

EXCHANGE RATE USED IN BASIC FUEL PRICE



INTERNATIONAL PRODUCT PRICES OF BASKET USED IN BASIC FUEL PRICE



BASIC FUEL PRICE IN SA CENTS PER LITRE

