

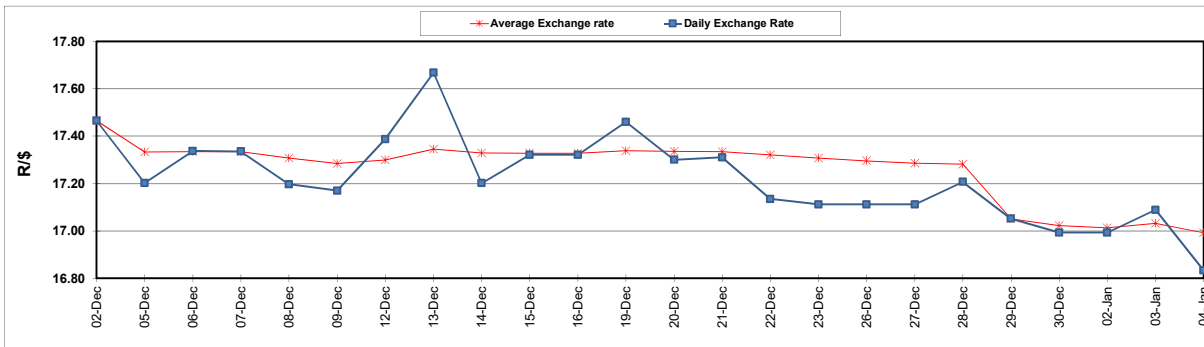
South African Cents per Litre (SA c/l)	PETROL 95 ULP	PETROL 93 ULP & LRP	DIESEL 0.05%	DIESEL 0.005%	ILL. PAR.
GAUTENG PUMP PRICE AS FROM 04/01/205	2,140.000	2,110.000	-	-	-
WHOLESALE PRICE AS FROM 04/01/205	-	-	2,122.870	2,141.270	1,525.958
SINGLE NATIONAL MAXIMUM RETAIL PRICE	-	-	-	-	2,009.000
BASIC FUEL PRICE - 04/01/2023	1,039.333	1,014.075	1,221.684	1,229.183	1,248.189
PRESS RELEASE CONTRIBUTION TO BFP 04/01/2023 - 04/01/2023	1,050.390	1,020.390	1,261.630	1,280.030	1,307.128
UNIT OVER/(UNDER) RECOVERY - 04/01/2023	11.057	6.315	39.946	50.847	58.939
AVERAGE BASIC FUEL PRICE 29/12/2022 - 04/01/2023	1,093.299	1,069.823	1,290.248	1,301.936	1,331.756
AVERAGE UNIT OVER/(UNDER) RECOVERY 29/12/2022 - 04/01/2023	104.371	97.847	168.982	185.294	129.772

### ANALYSIS MOVEMENT OF AVERAGE OVER/(UNDER) RECOVERY

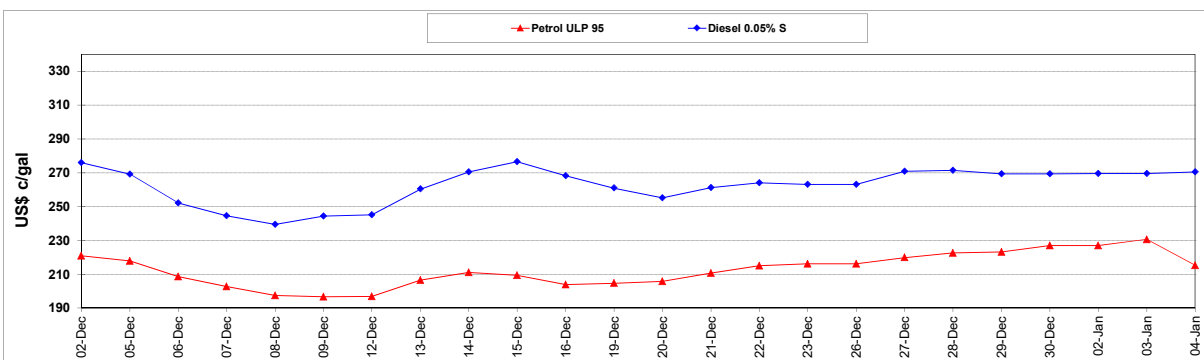
	PETROL 95	PETROL 93	DIESEL 0.05%	DIESEL 0.005%	ILL. PAR.
- MOVEMENT IN INTERNATIONAL PRODUCT PRICES	90.544	84.317	152.664	168.828	112.929
- MOVEMENT IN EXCHANGE RATE	13.827	13.530	16.318	16.466	16.843
AVERAGE UNIT OVER/(UNDER) RECOVERY 29/12/2022 - 04/01/2023	104.371	97.847	168.982	185.294	129.772

### R/\$ EXCHANGE RATE - (R/\$16.8338 - 04/01/2023)

#### EXCHANGE RATE USED IN BASIC FUEL PRICE



#### INTERNATIONAL PRODUCT PRICES OF BASKET USED IN BASIC FUEL PRICE



#### BASIC FUEL PRICE IN SA CENTS PER LITRE

