

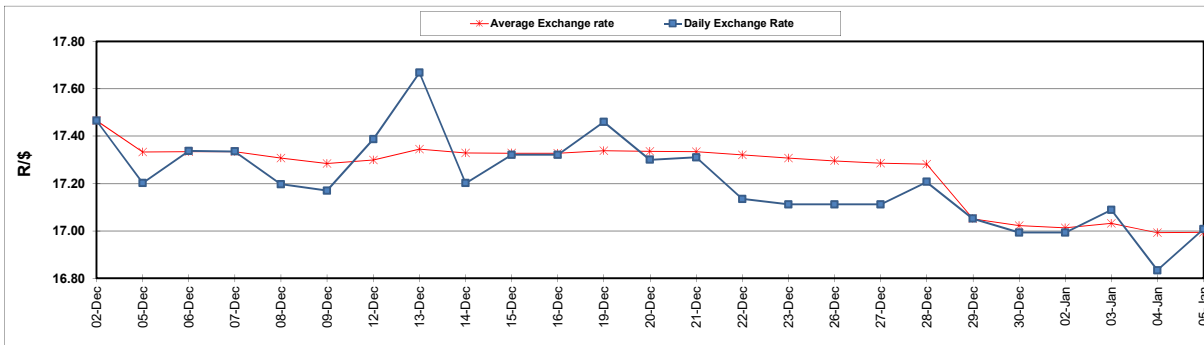
South African Cents per Litre (SA c/l)	PETROL 95 ULP	PETROL 93 ULP & LRP	DIESEL 0.05%	DIESEL 0.005%	ILL. PAR.
GAUTENG PUMP PRICE AS FROM 04/01/205	2,140.000	2,110.000	-	-	-
WHOLESALE PRICE AS FROM 04/01/205	-	-	2,122.870	2,141.270	1,525.958
SINGLE NATIONAL MAXIMUM RETAIL PRICE	-	-	-	-	2,009.000
BASIC FUEL PRICE - 05/01/2023	1,044.850	1,020.981	1,250.523	1,258.100	1,279.998
PRESS RELEASE CONTRIBUTION TO BFP 04/01/2023 - 05/01/2023	1,050.390	1,020.390	1,261.630	1,280.030	1,307.128
UNIT OVER/(UNDER) RECOVERY - 05/01/2023	5.540	(0.591)	11.107	21.930	27.130
AVERAGE BASIC FUEL PRICE 29/12/2022 - 05/01/2023	1,085.225	1,061.683	1,283.627	1,294.630	1,323.130
AVERAGE UNIT OVER/(UNDER) RECOVERY 29/12/2022 - 05/01/2023	87.899	81.441	142.670	158.067	112.665

ANALYSIS MOVEMENT OF AVERAGE OVER/(UNDER) RECOVERY

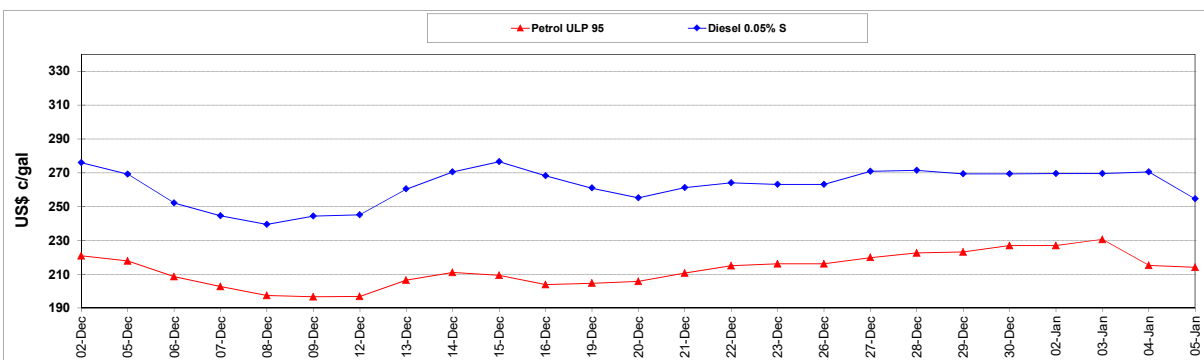
	PETROL 95	PETROL 93	DIESEL 0.05%	DIESEL 0.005%	ILL. PAR.
- MOVEMENT IN INTERNATIONAL PRODUCT PRICES	74.335	68.171	126.627	141.886	96.128
- MOVEMENT IN EXCHANGE RATE	13.563	13.269	16.043	16.181	16.537
AVERAGE UNIT OVER/(UNDER) RECOVERY 29/12/2022 - 05/01/2023	87.899	81.441	142.670	158.067	112.665

R/\$ EXCHANGE RATE - (R/\$17.0070 - 05/01/2023)

EXCHANGE RATE USED IN BASIC FUEL PRICE



INTERNATIONAL PRODUCT PRICES OF BASKET USED IN BASIC FUEL PRICE



BASIC FUEL PRICE IN SA CENTS PER LITRE

