

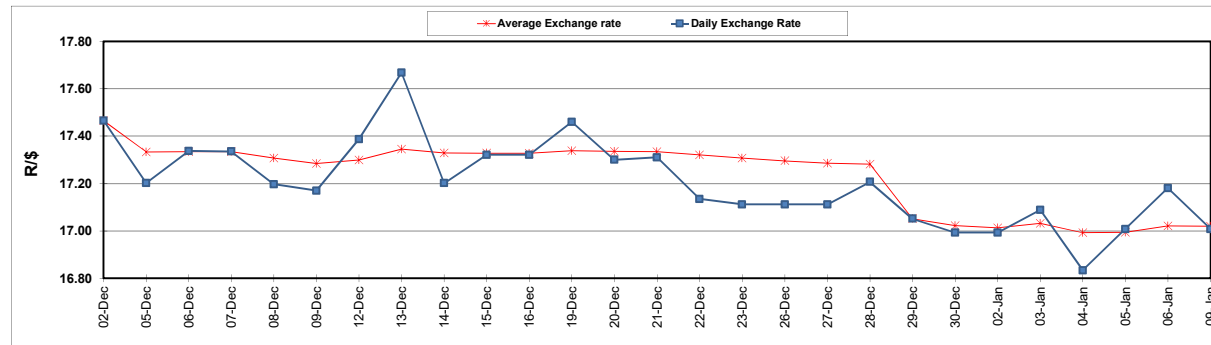
South African Cents per Litre (SA c/l)	PETROL 95 ULP	PETROL 93 ULP & LRP	DIESEL 0.05%	DIESEL 0.005%	ILL. PAR.
GAUTENG PUMP PRICE AS FROM 04/01/205	2,140.000	2,110.000	-	-	-
WHOLESALE PRICE AS FROM 04/01/205	-	-	2,122.870	2,141.270	1,525.958
SINGLE NATIONAL MAXIMUM RETAIL PRICE	-	-	-	-	2,009.000
BASIC FUEL PRICE - 09/01/2023	1,060.965	1,039.176	1,273.761	1,282.680	1,303.256
PRESS RELEASE CONTRIBUTION TO BFP 04/01/2023 - 09/01/2023	1,050.390	1,020.390	1,261.630	1,280.030	1,307.128
UNIT OVER/(UNDER) RECOVERY - 09/01/2023	(10.575)	(18.786)	(12.131)	(2.650)	3.872
AVERAGE BASIC FUEL PRICE 29/12/2022 - 09/01/2023	1,078.630	1,055.073	1,280.655	1,291.198	1,318.123
AVERAGE UNIT OVER/(UNDER) RECOVERY 29/12/2022 - 09/01/2023	63.810	57.367	104.475	118.332	85.505

### ANALYSIS MOVEMENT OF AVERAGE OVER/(UNDER) RECOVERY

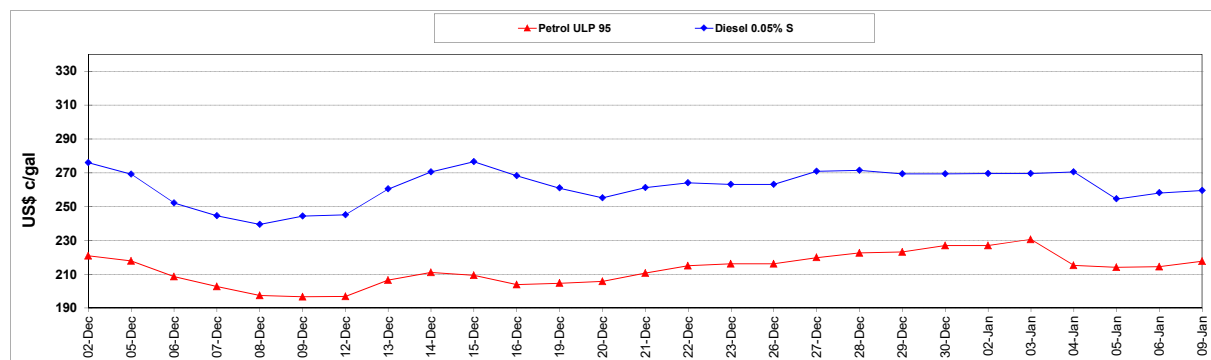
	PETROL 95	PETROL 93	DIESEL 0.05%	DIESEL 0.005%	ILL. PAR.
- MOVEMENT IN INTERNATIONAL PRODUCT PRICES	51.927	45.743	90.366	104.107	70.983
- MOVEMENT IN EXCHANGE RATE	11.883	11.624	14.109	14.225	14.522
AVERAGE UNIT OVER/(UNDER) RECOVERY 29/12/2022 - 09/01/2023	63.810	57.367	104.475	118.332	85.505

### R/\$ EXCHANGE RATE - (R/\$17.0078 - 09/01/2023)

#### EXCHANGE RATE USED IN BASIC FUEL PRICE



#### INTERNATIONAL PRODUCT PRICES OF BASKET USED IN BASIC FUEL PRICE



#### BASIC FUEL PRICE IN SA CENTS PER LITRE

